

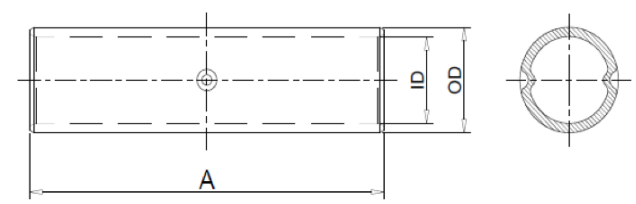
AL - Splices Catalog

Compression Connectors

CATEGORY EDITION

AL - Splices

Compression Connectors / AL - Splices



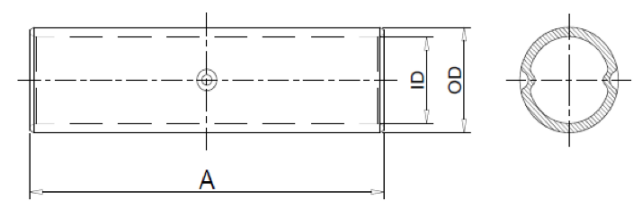
Installation Information

Manufacturer	Tools	Color	Code
-			

#	Cat.No	Wire Size	Dimension (in.)			Die Color	Die Code
		Code	A	ID	OD		
1	AS0145	1 AWG	2.36	0.37	0.56	Gold	45
2	AS0145-52	1 AWG	1.98	0.35	0.53	Gold	45
3	AS0145-62	1 AWG	2.03	0.37	0.54	Gold	45
4	AS0242	2 AWG	1.79	0.31	0.51	Pink	42
5	AS0242-52	2 AWG	1.98	0.31	0.53	Pink	42
6	AS0242-62	2 AWG	2.42	0.31	0.53	Pink	42
7	AS0437	4 AWG	1.79	0.27	0.46	Green	94
8	AS0437-52	4 AWG	2.11	0.27	0.48	Green	94
9	AS0437-62	4 AWG	1.95	0.26	0.43	Green	94
10	AS0629	6 AWG	1.61	0.20	0.35	Gray	29
11	AS0629-52	6 AWG	1.60	0.20	0.34	Gray	29
12	AS0629-62	6 AWG	1.68	0.20	0.34	Gray	29
13	AS0824	8 AWG	1.17	0.17	0.28	Blue	24
14	AS0824-62	8 AWG	1.42	0.17	0.30	Blue	24
15	AS1050	1/0 AWG	2.36	0.41	0.62	Tan	50
16	AS1050-52	1/0 AWG	2.10	0.39	0.64	Tan	50
17	AS1050-62	1/0 AWG	2.35	0.39	0.60	Tan	50
18	AS2054	2/0 AWG	2.48	0.46	0.70	Olive	54
19	AS2054-52	2/0 AWG	2.29	0.45	0.69	Olive	54
20	AS2054-62	2/0 AWG	2.59	0.44	0.67	Olive	54
21	AS2571	250 kcmil	3.89	0.65	0.92	Red	71
22	AS2571-52	250 kcmil	2.92	0.59	0.91	Red	71
23	AS2571-62	250 kcmil	3.16	0.59	0.92	Red	71
24	AS3060	3/0 AWG	2.79	0.52	0.77	Ruby	60
25	AS3060-52	3/0 AWG	2.60	0.48	0.76	Ruby	60
26	AS3060-62	3/0 AWG	2.86	0.48	0.76	Ruby	60
27	AS3176	300 kcmil	3.95	0.71	0.99	Blue	76
28	AS3176-52	300 kcmil	3.10	0.65	1.01	Blue	76
29	AS3176-62	300 kcmil	3.18	0.65	1.01	Blue	76
30	AS3587	350 kcmil	4.95	0.75	1.09	Brown	87

AL - Splices

Compression Connectors / AL - Splices



Installation Information

Manufacturer	Tools	Color	Code
-			

#	Cat.No	Wire Size	Dimension (in.)			Die Color	Die Code
		Code	A	ID	OD		
31	AS3587-52	350 kcmil	3.35	0.72	1.12	Brown	87
32	AS3587-62	350 kcmil	4.02	0.72	1.11	Brown	87
33	AS4066	4/0 AWG	3.64	0.60	0.86	White	66
34	AS4066-52	4/0 AWG	2.73	0.55	0.88	White	66
35	AS4066-62	4/0 AWG	3.04	0.55	0.85	White	66
36	AS4194	400 kcmil	4.95	0.81	1.18	Green	94
37	AS4194-52	400 kcmil	3.73	0.76	1.19	Green	94
38	AS4194-62	400 kcmil	4.84	0.76	1.19	Green	94
39	AS5199	500 kcmil	4.95	0.90	1.28	Pink	99
40	AS5199-52	500 kcmil	3.85	0.84	1.32	Pink	99
41	AS5199-62	500 kcmil	4.98	0.84	1.32	Pink	99
42	AS6106	600 kcmil	5.20	0.99	1.36	Black	106
43	AS6106-52	600 kcmil	4.10	0.92	1.44	Black	106
44	AS6106-62	600 kcmil	5.12	0.92	1.44	Black	106
45	AS7112	700 kcmil	5.42	1.06	1.44	Purple	112
46	AS7112-62	700 kcmil	5.24	1.06	1.46	Purple	112
47	AS7515	750 kcmil	5.67	1.10	1.50	Yellow	115
48	AS7515-52	750 kcmil	4.60	1.03	1.60	Yellow	115