

Wire Terminals Catalog

CATEGORY EDITION

Table of Contents

Catalog structure and section page index

Ring	5
Non-Insulated (R)	5
Vinyl-Insulated (VR)	13
Nylon-Insulated (AER)	16
Hook	19
Non-Insulated (HR)	19
Viny-Insulated (VHR)	21
Nylon-Insulated (AEHR)	23
Spade	25
Non-Insulated(S)	25
Vinyl-Insulated(VS)	27
Nylon-Insulated(AES)	29
Locking	31
Non-Insulated (LS)	31
Vinyl-Insulated (VLS)	33
Nylon-Insulated (AEELS)	35
Flange	37
Non-Insulated (FS)	37
Vinyl-Insulated (VFS)	39
Vinyl-Insulated (VFS-C)	41
Nylon-Insulated (AEFS)	43
Blade	45
Non-Insulated (BL)	45
Vinyl-Insulated (VBL)	47
Nylon-Insulated (AEBL)	49
Lipped	51
Non-Insulated (HBL)	51
Vinyl-Insulated (VHBL)	53
Nylon-Insulated (AEHBL)	55
Pin	57

Table of Contents (cont.)

Catalog structure and section page index

105 ° C 600 Volts Ma	57
105 ° C 600 Volts Max	59
105 ° C 600 Volts Max	61
Female	63
Vinyl-Insulated (VF)	63
Vinyl-Fully (VF-A)	65
Nylon-Insulated (AEF)	67
Nylon-Fully (AEF-A)	69
Nylon-Fully (AEF-AL)	71
Male-D	73
AL-Series-Nylon (AEM-AL)	73
Vinyl-Insulated (VM)	75
Nylon-Insulated (AEM)	77
Bullet	79
Nylon-Insulated (AEF)	79
Male-B	81
Vinyl-Insulated (VM)	81
Nylon-Insulated (AEM)	83
Nylon-Fully (AEM-A)	85
Piggyback	87
Vinyl-Insulated (VPB)	87
Nylon-Insulated (AEPB)	89
End terminals	91
Non-Insulated	91
Ferrules-Single	93
Ferrules-Twin	95
Splice	97
Splice-3M	97
T-TAP-T	99
Closed-End	101

Table of Contents (cont.)

Catalog structure and section page index

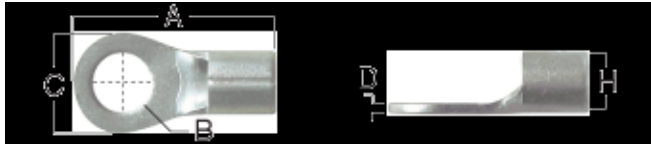
ASK	103
B	105
PT	107
AEB	109
VB	111
VPT	113

Non-Insulated (R)

Wire Terminals / Ring

Non-Insulated (R)

Wire Terminals / Ring / Non-Insulated (R)



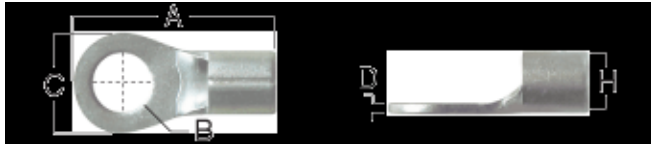
Installation Information

Manufacturer	Tools	Color	Code
-			

#	Cat.No	Stud/Tab		Dimension (Inch)				Wire Range	
		Size	A	B	C	D	H	A.W.G	
1	TR0210	#10	1.673	0.213	0.866	0.071 (1.80)	0.37	2	
2	TR0210S	#10	1.447	0.213	0.61	0.071 (1.80)	0.37	2	
3	TR0212	1/2	1.673	0.52	0.866	0.071 (1.80)	0.37	2	
4	TR0214	1/4	1.673	0.26	0.866	0.071 (1.80)	0.37	2	
5	TR0214S	1/4	1.447	0.26	0.61	0.071 (1.80)	0.37	2	
6	TR0234	3/4	2.047	0.835	1.181	0.071 (1.80)	0.37	2	
7	TR0238	3/8	1.673	0.421	0.866	0.071 (1.80)	0.37	2	
8	TR0238S	3/8	1.447	0.421	0.61	0.071 (1.80)	0.37	2	
9	TR0256	5/16	1.673	0.339	0.866	0.071 (1.80)	0.37	2	
10	TR0256S	5/16	1.447	0.339	0.61	0.071 (1.80)	0.37	2	
11	TR0258	5/8	2.047	0.677	1.181	0.071 (1.80)	0.37	2	
12	TR0261	11/16	2.047	0.756	1.181	0.071 (1.80)	0.37	2	
13	TR0296	9/16	2.047	0.598	1.181	0.071 (1.80)	0.37	2	
14	TR0610	#10	1.217	0.213	0.472	0.071 (1.80)	0.303	4	
15	TR0612	1/2	1.673	0.52	0.866	0.071 (1.80)	0.303	4	
16	TR0614	1/4	1.305	0.26	0.65	0.071 (1.80)	0.303	4	
17	TR0614S	1/4	1.217	0.26	0.472	0.071 (1.80)	0.303	4	
18	TR0634	3/4	2.028	0.835	1.181	0.071 (1.80)	0.303	4	
19	TR0638	3/8	1.415	0.421	0.689	0.071 (1.80)	0.303	4	
20	TR0656	5/16	1.305	0.339	0.65	0.071 (1.80)	0.303	4	
21	TR0656S	5/16	1.217	0.339	0.472	0.071 (1.80)	0.303	4	
22	TR0658	5/8	2.028	0.677	1.181	0.071 (1.80)	0.303	4	
23	TR0661	11/16	2.028	0.756	1.181	0.071 (1.80)	0.303	4	
24	TR0696	9/16	2.028	0.598	1.181	0.071 (1.80)	0.303	4	
25	TR0808	#8	0.888	0.173	0.472	0.043 (1.10)	0.193	8	
26	TR0808S	#8	0.888	0.173	0.374	0.047 (1.20)	0.177	8	
27	TR0810	#10	0.886	0.205	0.472	0.043 (1.10)	0.193	8	
28	TR0810	#10	1.161	0.213	0.472	0.059 (1.50)	0.228	6	
29	TR0810L	#10	1.165	0.205	0.591	0.047 (1.20)	0.177	8	
30	TR0810S	#10	0.888	0.205	0.374	0.047 (1.20)	0.177	8	

Non-Insulated (R)

Wire Terminals / Ring / Non-Insulated (R)



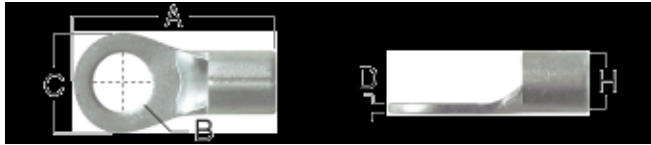
Installation Information

Manufacturer	Tools	Color	Code
-			

#	Cat.No	Stud/Tab		Dimension (Inch)				Wire Range	
		Size	A	B	C	D	H	A.W.G	
31	TR0810S	#10	1.122	0.213	0.394	0.059 (1.50)	0.228	6	
32	TR0812	1/2	1.319	0.52	0.787	0.047 (1.20)	0.177	8	
33	TR0812	1/2	1.547	0.52	0.866	0.059 (1.50)	0.228	6	
34	TR0814	1/4	0.886	0.252	0.472	0.043 (1.10)	0.193	8	
35	TR0814	1/4	1.161	0.26	0.472	0.059 (1.50)	0.228	6	
36	TR0814L	1/4	1.165	0.26	0.591	0.047 (1.20)	0.177	8	
37	TR0814S	1/4	0.888	0.26	0.374	0.047 (1.20)	0.177	8	
38	TR0814S	1/4	1.122	0.26	0.394	0.059 (1.50)	0.228	6	
39	TR0834	3/4	1.969	0.835	1.26	0.047 (1.20)	0.177	8	
40	TR0834	3/4	1.929	0.835	1.181	0.059 (1.50)	0.228	6	
41	TR0838	3/8	1.165	0.421	0.591	0.047 (1.20)	0.177	8	
42	TR0838	3/8	1.291	0.421	0.63	0.059 (1.50)	0.228	6	
43	TR0856	5/16	1.063	0.339	0.551	0.043 (1.10)	0.189	8	
44	TR0856	5/16	1.291	0.339	0.63	0.059 (1.50)	0.228	6	
45	TR0856S	5/16	1.161	0.339	0.472	0.059 (1.50)	0.228	6	
46	TR0858	5/8	1.929	0.677	1.181	0.059 (1.50)	0.228	6	
47	TR0861	11/16	1.969	0.756	1.26	0.047 (1.20)	0.177	8	
48	TR0861	11/16	1.929	0.756	1.181	0.059 (1.50)	0.228	6	
49	TR0885	5/18	1.969	0.677	1.26	0.047 (1.20)	0.177	8	
50	TR0896	9/16	1.969	0.598	1.26	0.047 (1.20)	0.177	8	
51	TR0896	9/16	1.929	0.598	1.181	0.059 (1.50)	0.228	6	
52	TR1012	1/2	1.929	0.52	0.866	0.075 (1.90)	0.449	1/0	
53	TR1014	1/4	1.929	0.26	0.866	0.075 (1.90)	0.449	1/0	
54	TR1014S	1/4	1.87	0.26	0.748	0.075 (1.90)	0.449	1/0	
55	TR1034	3/4	2.264	0.835	1.26	0.079 (2.00)	0.449	1/0	
56	TR1038	3/8	1.929	0.421	0.866	0.075 (1.90)	0.449	1/0	
57	TR1038S	3/8	1.87	0.421	0.748	0.075 (1.90)	0.449	1/0	
58	TR1056	5/16	1.929	0.339	0.866	0.075 (1.90)	0.449	1/0	
59	TR1056S	5/16	1.87	0.339	0.748	0.075 (1.90)	0.449	1/0	
60	TR1058	5/8	2.264	0.677	1.26	0.079 (2.00)	0.449	1/0	

Non-Insulated (R)

Wire Terminals / Ring / Non-Insulated (R)



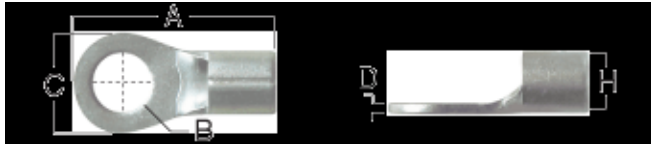
Installation Information

Manufacturer	Tools	Color	Code
-			

#	Cat.No	Stud/Tab		Dimension (Inch)				Wire Range
		Size	A	B	C	D	H	A.W.G
61	TR1061	11/16	2.264	0.756	1.26	0.079 (2.00)	0.449	1/0
62	TR1078	7/8	2.264	0.913	1.26	0.079 (2.00)	0.449	1/0
63	TR1096	9/16	2.264	0.598	1.26	0.079 (2.00)	0.449	1/0
64	TR1204	#4	0.768	0.126	0.374	0.039 (1.00)	0.142	12 - 10
65	TR1206	#6	0.768	0.146	0.374	0.039 (1.00)	0.142	12 - 10
66	TR1208	#8	0.768	0.169	0.374	0.039 (1.00)	0.142	12 - 10
67	TR1208S	#8	0.728	0.169	0.291	0.039 (1.00)	0.142	12 - 10
68	TR1210	#10	0.768	0.209	0.374	0.039 (1.00)	0.142	12 - 10
69	TR1212	1/2	1.276	0.512	0.756	0.039 (1.00)	0.142	12 - 10
70	TR1214	1/4	1.004	0.252	0.472	0.039 (1.00)	0.142	12 - 10
71	TR1238	3/8	1.091	0.413	0.591	0.039 (1.00)	0.142	12 - 10
72	TR1256	5/16	1.091	0.331	0.591	0.039 (1.00)	0.142	12 - 10
73	TR1408	#8	0.768	0.169	0.374	0.031 (0.80)	0.134	14 - 12
74	TR1410	#10	0.768	0.209	0.374	0.031 (0.80)	0.134	14 - 12
75	TR1604	#4	0.661	0.126	0.335	0.031 (0.80)	0.098	16 - 14
76	TR1604M	#4	0.567	0.126	0.260	0.031 (0.80)	0.098	16 - 14
77	TR1606	#6	0.567	0.146	0.260	0.031 (0.80)	0.098	16 - 14
78	TR1606L	#6	0.661	0.146	0.335	0.031 (0.80)	0.098	16 - 14
79	TR1608	#8	0.661	0.169	0.335	0.031 (0.80)	0.098	16 - 14
80	TR1608M	#8	0.567	0.169	0.260	0.031 (0.80)	0.098	16 - 14
81	TR1610	#10	0.657	0.209	0.374	0.031 (0.80)	0.098	16 - 14
82	TR1610M	#10	0.661	0.209	0.335	0.031 (0.80)	0.098	16 - 14
83	TR1612	1/2	1.13	0.512	0.748	0.031 (0.80)	0.098	16 - 14
84	TR1614	1/4	0.835	0.252	0.472	0.031 (0.80)	0.098	16 - 14
85	TR1638	3/8	1.004	0.413	0.539	0.030 (0.75)	0.098	16 - 14
86	TR1656	5/16	0.835	0.331	0.472	0.031 (0.80)	0.098	16 - 14
87	TR2012	1/2	1.929	0.52	1.063	0.079 (2.00)	0.531	2/0
88	TR2014	1/4	1.929	0.26	1.063	0.079 (2.00)	0.531	2/0
89	TR2038	3/8	1.929	0.421	1.063	0.079 (2.00)	0.531	2/0
90	TR2056	5/16	1.929	0.339	1.063	0.079 (2.00)	0.531	2/0

Non-Insulated (R)

Wire Terminals / Ring / Non-Insulated (R)



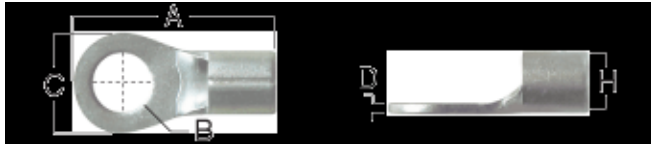
Installation Information

Manufacturer	Tools	Color	Code
-			

#	Cat.No	Stud/Tab		Dimension (Inch)				Wire Range
		Size	A	B	C	D	H	A.W.G
91	TR2058	5/8	2.106	0.677	1.063	0.079 (2.00)	0.531	2/0
92	TR2096	9/16	2.106	0.598	1.063	0.079 (2.00)	0.531	2/0
93	TR2204	#4	0.453	0.126	0.217	0.030 (0.75)	0.075	22 - 16
94	TR2206	#6	0.453	0.146	0.217	0.030 (0.75)	0.075	22 - 16
95	TR2206L	#6	0.567	0.146	0.260	0.030 (0.75)	0.075	22 - 16
96	TR2208	#8	0.622	0.169	0.315	0.030 (0.75)	0.075	22 - 16
97	TR2208M	#8	0.567	0.169	0.260	0.030 (0.75)	0.075	22 - 16
98	TR2210	#10	0.622	0.209	0.315	0.030 (0.75)	0.075	22 - 16
99	TR2212	1/2	1.130	0.512	0.748	0.039 (1.00)	0.075	22 - 16
100	TR2214	1/4	0.846	0.252	0.457	0.030 (0.75)	0.075	22 - 16
101	TR2238	3/8	1.004	0.413	0.539	0.039 (1.00)	0.075	22 - 16
102	TR2256	5/16	0.846	0.331	0.457	0.030 (0.75)	0.075	22 - 16
103	TR2512	1/2	2.638	0.52	1.417	0.126 (3.20)	0.768	250/300
104	TR2512L	1/2	2.953	0.52	1.417	0.126 (3.20)	0.768	250/300
105	TR2514	1/4	2.638	0.26	1.417	0.126 (3.20)	0.768	250/300
106	TR2514L	1/4	2.953	0.26	1.417	0.126 (3.20)	0.768	250/300
107	TR2534	3/4	2.953	0.835	1.417	0.126 (3.20)	0.768	250/300
108	TR2538	3/8	2.638	0.421	1.417	0.126 (3.20)	0.768	250/300
109	TR2538L	3/8	2.953	0.421	1.417	0.126 (3.20)	0.768	250/300
110	TR2556	5/16	2.638	0.339	1.417	0.126 (3.20)	0.768	250/300
111	TR2556L	5/16	2.953	0.339	1.417	0.126 (3.20)	0.768	250/300
112	TR2558	5/8	2.953	0.677	1.417	0.126 (3.20)	0.768	250/300
113	TR2558S	5/8	2.638	0.677	1.417	0.126 (3.20)	0.768	250/300
114	TR2561	11/16	2.953	0.756	1.417	0.126 (3.20)	0.768	250/300
115	TR2578	7/8	2.953	0.913	1.417	0.126 (3.20)	0.768	250/300
116	TR2596	9/16	2.953	0.598	1.417	0.126 (3.20)	0.768	250/300
117	TR2596S	9/16	2.638	0.598	1.417	0.126 (3.20)	0.768	250/300
118	TR3012	1/2	2.087	0.52	1.063	0.091 (2.30)	0.571	3/0
119	TR3012L	1/2	2.48	0.52	1.26	0.091 (2.30)	0.571	3/0
120	TR3014	1/4	2.087	0.26	1.063	0.091 (2.30)	0.571	3/0

Non-Insulated (R)

Wire Terminals / Ring / Non-Insulated (R)



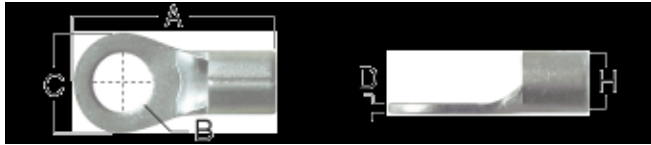
Installation Information

Manufacturer	Tools	Color	Code
-			

#	Cat.No	Stud/Tab		Dimension (Inch)				Wire Range
		Size	A	B	C	D	H	A.W.G
121	TR3014L	1/4	2.48	0.26	1.26	0.091 (2.30)	0.571	3/0
122	TR3034	3/4	2.48	0.835	1.26	0.091 (2.30)	0.571	3/0
123	TR3038	3/8	2.087	0.421	1.063	0.091 (2.30)	0.571	3/0
124	TR3038L	3/8	2.48	0.421	1.26	0.091 (2.30)	0.571	3/0
125	TR3056	5/16	2.087	0.339	1.063	0.091 (2.30)	0.571	3/0
126	TR3056L	5/16	2.48	0.339	1.26	0.091 (2.30)	0.571	3/0
127	TR3058	5/8	2.48	0.677	1.26	0.091 (2.30)	0.571	3/0
128	TR3061	11/16	2.48	0.756	1.26	0.091 (2.30)	0.571	3/0
129	TR3078	7/8	2.48	0.913	1.26	0.091 (2.30)	0.571	3/0
130	TR3096	9/16	2.48	0.598	1.26	0.091 (2.30)	0.571	3/0
131	TR3096S	9/16	2.087	0.598	1.063	0.091 (2.30)	0.571	3/0
132	TR3101	1	3.543	1.11	1.575	0.126 (3.20)	0.866	300/350
133	TR3112	1/2	2.756	0.52	1.575	0.126 (3.20)	0.866	300/350
134	TR3112L	1/2	3.543	0.52	1.575	0.126 (3.20)	0.866	300/350
135	TR3134	3/4	3.543	0.835	1.575	0.126 (3.20)	0.866	300/350
136	TR3138	3/8	2.756	0.421	1.575	0.126 (3.20)	0.866	300/350
137	TR3138L	3/8	3.543	0.421	1.575	0.126 (3.20)	0.866	300/350
138	TR3156	5/16	2.756	0.339	1.575	0.126 (3.20)	0.866	300/350
139	TR3156L	5/16	3.543	0.339	1.575	0.126 (3.20)	0.866	300/350
140	TR3158	5/8	3.543	0.677	1.575	0.126 (3.20)	0.866	300/350
141	TR3158S	5/8	2.756	0.677	1.575	0.126 (3.20)	0.866	300/350
142	TR3161	11/16	3.543	0.756	1.575	0.126 (3.20)	0.866	300/350
143	TR3165	15/16	3.543	0.992	1.575	0.126 (3.20)	0.866	300/350
144	TR3178	7/8	3.543	0.913	1.575	0.126 (3.20)	0.866	300/350
145	TR3196	9/16	2.756	0.598	1.575	0.126 (3.20)	0.866	300/350
146	TR3196L	9/16	3.543	0.598	1.575	0.126 (3.20)	0.866	300/350
147	TR4012	1/2	2.185	0.52	1.122	0.102 (2.60)	0.646	4/0
148	TR4012L	1/2	2.717	0.52	1.26	0.102 (2.60)	0.646	4/0
149	TR4014	1/4	2.185	0.26	1.122	0.102 (2.60)	0.646	4/0
150	TR4014L	1/4	2.717	0.26	1.26	0.102 (2.60)	0.646	4/0

Non-Insulated (R)

Wire Terminals / Ring / Non-Insulated (R)



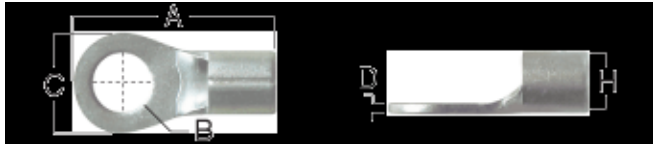
Installation Information

Manufacturer	Tools	Color	Code
-			

#	Cat.No	Stud/Tab		Dimension (Inch)				Wire Range
		Size	A	B	C	D	H	A.W.G
151	TR4034	3/4	2.717	0.835	1.26	0.102 (2.60)	0.646	4/0
152	TR4038	3/8	2.185	0.421	1.122	0.102 (2.60)	0.646	4/0
153	TR4038L	3/8	2.717	0.421	1.26	0.102 (2.60)	0.646	4/0
154	TR4056	5/16	2.185	0.339	1.122	0.102 (2.60)	0.646	4/0
155	TR4056L	5/16	2.717	0.339	1.26	0.102 (2.60)	0.646	4/0
156	TR4058	5/8	2.717	0.677	1.26	0.102 (2.60)	0.646	4/0
157	TR4061	11/16	2.717	0.756	1.26	0.102 (2.60)	0.646	4/0
158	TR4078	7/8	2.717	0.913	1.26	0.102 (2.60)	0.646	4/0
159	TR4096	9/16	2.717	0.598	1.26	0.102 (2.60)	0.646	4/0
160	TR4096S	9/16	2.185	0.598	1.122	0.102 (2.60)	0.646	4/0
161	TR4101	1	3.583	1.11	1.732	0.157 (4.00)	0.945	400/500
162	TR4112	1/2	3.11	0.52	1.732	0.157 (4.00)	0.945	400/500
163	TR4112L	1/2	3.583	0.52	1.732	0.157 (4.00)	0.945	400/500
164	TR4134	3/4	3.583	0.835	1.732	0.157 (4.00)	0.945	400/500
165	TR4138	3/8	3.11	0.421	1.732	0.157 (4.00)	0.945	400/500
166	TR4138L	3/8	3.583	0.421	1.732	0.157 (4.00)	0.945	400/500
167	TR4156	5/16	3.11	0.339	1.732	0.157 (4.00)	0.945	400/500
168	TR4156L	5/16	3.583	0.339	1.732	0.157 (4.00)	0.945	400/500
169	TR4158	5/8	3.583	0.677	1.732	0.157 (4.00)	0.945	400/500
170	TR4158S	5/8	3.11	0.677	1.732	0.157 (4.00)	0.945	400/500
171	TR4161	11/16	3.583	0.756	1.732	0.157 (4.00)	0.945	400/500
172	TR4161S	11/16	3.11	0.756	1.732	0.157 (4.00)	0.945	400/500
173	TR4165	15/16	3.583	0.992	1.732	0.157 (4.00)	0.945	400/500
174	TR4178	7/8	3.583	0.913	1.732	0.157 (4.00)	0.945	400/500
175	TR4196	9/16	3.11	0.598	1.732	0.157 (4.00)	0.945	400/500
176	TR4196L	9/16	3.583	0.598	1.732	0.157 (4.00)	0.945	400/500
177	TR5101	1	3.858	1.11	1.969	0.177 (4.50)	1.102	500/600
178	TR5112	1/2	3.622	0.52	1.969	0.177 (4.50)	1.102	500/600
179	TR5112L	1/2	3.858	0.52	1.969	0.177 (4.50)	1.102	500/600
180	TR5134	3/4	3.858	0.835	1.969	0.177 (4.50)	1.102	500/600

Non-Insulated (R)

Wire Terminals / Ring / Non-Insulated (R)



Installation Information

Manufacturer	Tools	Color	Code
-			

#	Cat.No	Stud/Tab		Dimension (Inch)				Wire Range
		Size	A	B	C	D	H	A.W.G
181	TR5134S	3/4	3.622	0.835	1.969	0.177 (4.50)	1.102	500/600
182	TR5138	3/8	3.622	0.421	1.969	0.177 (4.50)	1.102	500/600
183	TR5138L	3/8	3.858	0.421	1.969	0.177 (4.50)	1.102	500/600
184	TR5156	5/16	3.622	0.339	1.969	0.177 (4.50)	1.102	500/600
185	TR5156L	5/16	3.858	0.339	1.969	0.177 (4.50)	1.102	500/600
186	TR5158	5/8	3.622	0.677	1.969	0.177 (4.50)	1.102	500/600
187	TR5158L	5/8	3.858	0.677	1.969	0.177 (4.50)	1.102	500/600
188	TR5161	11/16	3.858	0.756	1.969	0.177 (4.50)	1.102	500/600
189	TR5161S	11/16	3.622	0.756	1.969	0.177 (4.50)	1.102	500/600
190	TR5165	15/16	3.858	0.992	1.969	0.177 (4.50)	1.102	500/600
191	TR5178	7/8	3.858	0.913	1.969	0.177 (4.50)	1.102	500/600
192	TR5196	9/16	3.622	0.598	1.969	0.177 (4.50)	1.102	500/600
193	TR5196L	9/16	3.858	0.598	1.969	0.177 (4.50)	1.102	500/600
194	WP0610-171(S)	#6	0.567	0.146	0.26	0.031	0.098	16-14
195	WP2012-147(S)	#8	0.567	0.169	0.26	0.03	0.075	22-16
196	WP2056-148(S)	#6	0.567	0.146	0.26	0.03	0.075	22-16

Vinyl-Insulated (VR)

Wire Terminals / Ring

Vinyl-Insulated (VR)

Wire Terminals / Ring / Vinyl-Insulated (VR)



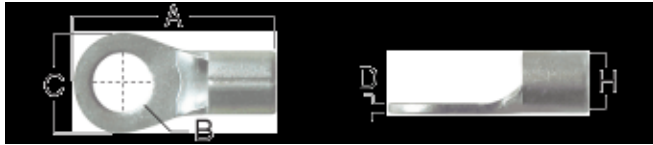
Installation Information

Manufacturer	Tools	Color	Code
-			

#	Cat.No	Stud/Tab		Dimension (Inch)				Wire Range	
		Size	A	B	C	D	A.W.G	A.W.G	
1	TR1204V	#4	1.051	0.126	0.374	0.039 (1.00)	12 - 10	12 - 10	
2	TR1206V	#6	1.051	0.146	0.374	0.039 (1.00)	12 - 10	12 - 10	
3	TR1208V	#8	1.051	0.169	0.374	0.039 (1.00)	12 - 10	12 - 10	
4	TR1208VS	#8	1.051	0.169	0.291	0.039 (1.00)	12 - 10	12 - 10	
5	TR1210V	#10	1.051	0.209	0.374	0.039 (1.00)	12 - 10	12 - 10	
6	TR1210VS	#10	1.051	0.209	0.291	0.039 (1.00)	12 - 10	12 - 10	
7	TR1212V	1/2	1.571	0.512	0.756	0.039 (1.00)	12 - 10	12 - 10	
8	TR1214V	1/4	1.287	0.252	0.472	0.039 (1.00)	12 - 10	12 - 10	
9	TR1238V	3/8	1.374	0.413	0.591	0.039 (1.00)	12 - 10	12 - 10	
10	TR1256V	5/16	1.374	0.331	0.591	0.039 (1.00)	12 - 10	12 - 10	
11	TR1604V	#4	0.906	0.126	0.335	0.031 (0.80)	16 - 14	16 - 14	
12	TR1604VM	#4	0.811	0.126	0.26	0.031 (0.80)	16 - 14	16 - 14	
13	TR1606V	#6	0.811	0.146	0.26	0.031 (0.80)	14 - 16	14 - 16	
14	TR1606VL	#6	0.906	0.146	0.335	0.031 (0.80)	16 - 14	16 - 14	
15	TR1608V	#8	0.906	0.169	0.335	0.031 (0.80)	16 - 14	16 - 14	
16	TR1608VM	#8	0.819	0.169	0.26	0.031 (0.80)	16 - 14	16 - 14	
17	TR1610V	#10	0.906	0.209	0.374	0.031 (0.80)	16 - 14	16 - 14	
18	TR1610VM	#10	0.906	0.209	0.335	0.031 (0.80)	16 - 14	16 - 14	
19	TR1612V	1/2	1.398	0.512	0.748	0.031 (0.80)	16 - 14	16 - 14	
20	TR1614V	1/4	1.106	0.252	0.472	0.031 (0.80)	16 - 14	16 - 14	
21	TR1638V	3/8	1.256	0.413	0.539	0.031 (0.80)	16 - 14	16 - 14	
22	TR1656V	5/16	1.106	0.331	0.472	0.031 (0.80)	16 - 14	16 - 14	
23	TR2204V	#4	0.689	0.126	0.217	0.030 (0.75)	22 - 16	22 - 16	
24	TR2206V	#6	0.689	0.146	0.217	0.030 (0.75)	22 - 16	22 - 16	
25	TR2206VM	#6	0.803	0.146	0.26	0.030 (0.75)	22 - 16	22 - 16	
26	TR2208V	#8	0.854	0.169	0.315	0.030 (0.75)	22 - 16	22 - 16	
27	TR2208VM	#8	0.803	0.169	0.26	0.030 (0.75)	22 - 16	22 - 16	
28	TR2210V	#10	0.854	0.209	0.315	0.030 (0.75)	22 - 16	22 - 16	
29	TR2212V	1/2	1.378	0.512	0.748	0.030 (0.75)	22 - 16	22 - 16	
30	TR2214V	1/4	1.087	0.252	0.457	0.030 (0.75)	22 - 16	22 - 16	

Vinyl-Insulated (VR)

Wire Terminals / Ring / Vinyl-Insulated (VR)



Installation Information

Manufacturer	Tools	Color	Code
-			

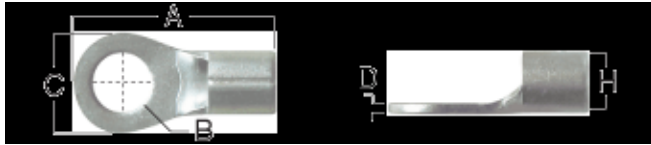
#	Cat.No	Stud/Tab Size	Dimension (Inch)				Wire Range	
			A	B	C	D	A.W.G	A.W.G
31	TR2238V	3/8	1.24	0.413	0.539	0.030 (0.75)	22 - 16	22 - 16
32	TR2256V	5/16	1.087	0.331	0.457	0.030 (0.75)	22 - 16	22 - 16

Nylon-Insulated (AER)

Wire Terminals / Ring

Nylon-Insulated (AER)

Wire Terminals / Ring / Nylon-Insulated (AER)



Installation Information

Manufacturer	Tools	Color	Code
-			

#	Cat.No	Stud/Tab		Dimension (Inch)				Wire Range	
		Size	A	B	C	D	A.W.G	A.W.G	
1	TR1204N	#4	1.051	0.126	0.374	0.039 (1.00)	12 - 10	12 - 10	
2	TR1206N	#6	1.051	0.146	0.374	0.039 (1.00)	12 - 10	12 - 10	
3	TR1208N	#8	1.051	0.169	0.374	0.039 (1.00)	12 - 10	12 - 10	
4	TR1208NS	#8	1.051	0.169	0.291	0.039 (1.00)	12 - 10	12 - 10	
5	TR1210N	#10	1.051	0.209	0.374	0.039 (1.00)	12 - 10	12 - 10	
6	TR1210NS	#10	1.051	0.209	0.291	0.039 (1.00)	12 - 10	12 - 10	
7	TR1212	1/2	1.559	0.512	0.756	0.039 (1.00)	12 - 10	12 - 10	
8	TR1214N	1/4	1.287	0.252	0.472	0.039 (1.00)	12 - 10	12 - 10	
9	TR1238N	3/8	1.374	0.413	0.591	0.039 (1.00)	12 - 10	12 - 10	
10	TR1256N	5/16	1.374	0.331	0.591	0.039 (1.00)	12 - 10	12 - 10	
11	TR1604N	#4	0.906	0.126	0.335	0.031 (0.80)	16 - 14	16 - 14	
12	TR1604NM	#4	0.811	0.126	0.26	0.031 (0.80)	16 - 14	16 - 14	
13	TR1606N	#6	0.811	0.146	0.26	0.031 (0.80)	16 - 14	16 - 14	
14	TR1606NL	#6	0.906	0.146	0.335	0.031 (0.80)	16 - 14	16 - 14	
15	TR1608N	#8	0.906	0.169	0.335	0.031 (0.80)	16 - 14	16 - 14	
16	TR1608NM	#8	0.819	0.169	0.26	0.031 (0.80)	16 - 14	16 - 14	
17	TR1610N	#10	0.906	0.209	0.374	0.031 (0.80)	16 - 14	16 - 14	
18	TR1610NM	#10	0.906	0.209	0.335	0.031 (0.80)	16 - 14	16 - 14	
19	TR1612	1/2	1.398	0.512	0.748	0.031 (0.80)	16 - 14	16 - 14	
20	TR1614N	1/4	1.106	0.252	0.472	0.031 (0.80)	16 - 14	16 - 14	
21	TR1638N	3/8	1.256	0.413	0.539	0.031 (0.80)	16 - 14	16 - 14	
22	TR1656N	5/16	1.106	0.331	0.472	0.031 (0.80)	16 - 14	16 - 14	
23	TR2204N	#4	0.689	0.126	0.217	0.030 (0.75)	22 - 16	22 - 16	
24	TR2206N	#6	0.689	0.146	0.217	0.030 (0.75)	22 - 16	22 - 16	
25	TR2206NM	#6	0.803	0.146	0.26	0.030 (0.75)	22 - 16	22 - 16	
26	TR2208N	#8	0.854	0.169	0.315	0.030 (0.75)	22 - 16	22 - 16	
27	TR2208NM	#8	0.803	0.169	0.26	0.030 (0.75)	22 - 16	22 - 16	
28	TR2210N	#10	0.854	0.209	0.315	0.030 (0.75)	22 - 16	22 - 16	
29	TR2212N	1/2	1.378	0.512	0.748	0.030 (0.75)	22 - 16	22 - 16	
30	TR2214N	1/4	1.087	0.252	0.457	0.030 (0.75)	22 - 16	22 - 16	

Nylon-Insulated (AER)

Wire Terminals / Ring / Nylon-Insulated (AER)



Installation Information

Manufacturer	Tools	Color	Code
-			

#	Cat.No	Stud/Tab Size	Dimension (Inch)				Wire Range	
			A	B	C	D	A.W.G	A.W.G
31	TR2238N	3/8	1.24	0.413	0.539	0.030 (0.75)	22 - 16	22 - 16
32	TR2256N	5/16	1.087	0.331	0.457	0.030 (0.75)	22 - 16	22 - 16

Non-Insulated (HR)

Wire Terminals / Hook

Non-Insulated (HR)

Wire Terminals / Hook / Non-Insulated (HR)



Installation Information

Manufacturer	Tools	Color	Code
-			

#	Cat.No	Stud/Tab		Dimension (Inch)				Wire Range
		Size	A	B	C	D	H	A.W.G
1	TH1206	#6	0.768	0.146	0.374	0.039 (1.00)	0.142	12 - 10
2	TH1208	#8	0.768	0.169	0.374	0.039 (1.00)	0.142	12 - 10
3	TH1210	#10	0.768	0.209	0.374	0.039 (1.00)	0.142	12 - 10
4	TH1214	1/4	1.004	0.252	0.472	0.039 (1.00)	0.142	12 - 10
5	TH1238	3/8	1.091	0.413	0.591	0.039 (1.00)	0.142	12 - 10
6	TH1256	5/16	1.091	0.331	0.591	0.039 (1.00)	0.142	12 - 10
7	TH1604	#4	0.661	0.126	0.335	0.031 (0.80)	0.098	16 - 14
8	TH1608	#8	0.661	0.169	0.335	0.031 (0.80)	0.098	16 - 14
9	TH1610	#10	0.657	0.209	0.374	0.031 (0.80)	0.098	16 - 14
10	TH1614	1/4	0.858	0.252	0.472	0.031 (0.80)	0.098	16 - 14
11	TH1638	3/8	1.004	0.413	0.539	0.031 (0.80)	0.098	16 - 14
12	TH1656	5/16	0.858	0.331	0.472	0.031 (0.80)	0.098	16 - 14
13	TH2208	#8	0.622	0.169	0.315	0.030 (0.75)	0.075	22 - 16
14	TH2210	#10	0.622	0.209	0.315	0.030 (0.75)	0.075	22 - 16
15	TH2214	1/4	0.846	0.252	0.457	0.030 (0.75)	0.075	22 - 16
16	TH2238	3/8	1.004	0.413	0.539	0.030 (0.75)	0.075	22 - 16
17	TH2256	5/16	0.846	0.331	0.457	0.030 (0.75)	0.075	22 - 16

Viny-Insulated (VHR)

Wire Terminals / Hook

Viny-Insulated (VHR)

Wire Terminals / Hook / Viny-Insulated (VHR)



Installation Information

Manufacturer	Tools	Color	Code
-			

#	Cat.No	Stud/Tab		Dimension (Inch)				Wire Range
		Size	A	B	C	D		
1	TH1204V	#4	1.051	0.126	0.374	0.039 (1.00)	12 - 10	
2	TH1206V	#6	1.051	0.146	0.374	0.039 (1.00)	12 - 10	
3	TH1208V	#8	1.051	0.169	0.374	0.039 (1.00)	12 - 10	
4	TH1210V	#10	1.051	0.209	0.374	0.039 (1.00)	12 - 10	
5	TH1214V	1/4	1.287	0.252	0.472	0.039 (1.00)	12 - 10	
6	TH1238V	3/8	1.374	0.413	0.591	0.039 (1.00)	12 - 10	
7	TH1256V	5/16	1.374	0.331	0.591	0.039 (1.00)	12 - 10	
8	TH1604V	#4	0.906	0.126	0.335	0.031 (0.80)	16 - 14	
9	TH1608V	#8	0.906	0.169	0.335	0.031 (0.80)	16 - 14	
10	TH1610V	#10	0.906	0.209	0.374	0.031 (0.80)	16 - 14	
11	TH1614V	1/4	1.106	0.252	0.472	0.031 (0.80)	16 - 14	
12	TH1638V	3/8	1.256	0.413	0.535	0.031 (0.80)	16 - 14	
13	TH1656V	5/16	1.106	0.331	0.472	0.031 (0.80)	16 - 14	
14	TH2208V	#8	0.854	0.169	0.315	0.030 (0.75)	22 - 16	
15	TH2210V	#10	0.854	0.209	0.315	0.030 (0.75)	22 - 16	
16	TH2214V	1/4	1.087	0.252	0.457	0.030 (0.75)	22 - 16	
17	TH2238V	3/8	1.24	0.413	0.539	0.030 (0.75)	22 - 16	
18	TH2256V	5/16	1.087	0.331	0.457	0.030 (0.75)	22 - 16	

Nylon-Insulated (AEHR)

Wire Terminals / Hook

Nylon-Insulated (AEHR)

Wire Terminals / Hook / Nylon-Insulated (AEHR)



Installation Information

Manufacturer	Tools	Color	Code
-			

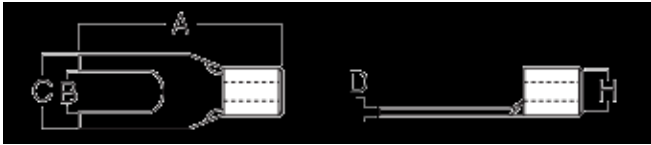
#	Cat.No	Stud/Tab		Dimension (Inch)				Wire Range
		Size	A	B	C	D		
1	TH1204N	#4	1.051	0.126	0.374	0.039 (1.00)	12 - 10	
2	TH1206N	#6	1.051	0.146	0.374	0.039 (1.00)	12 - 10	
3	TH1208N	#8	1.051	0.169	0.374	0.039 (1.00)	12 - 10	
4	TH1210N	#10	1.051	0.209	0.374	0.039 (1.00)	12 - 10	
5	TH1214N	1/4	1.287	0.252	0.472	0.039 (1.00)	12 - 10	
6	TH1238N	3/8	1.374	0.413	0.591	0.039 (1.00)	12 - 10	
7	TH1256N	5/16	1.374	0.331	0.591	0.039 (1.00)	12 - 10	
8	TH1604N	#4	0.906	0.126	0.335	0.031 (0.80)	16 - 14	
9	TH1608N	#8	0.906	0.169	0.335	0.031 (0.80)	16 - 14	
10	TH1610N	#10	0.906	0.209	0.374	0.031 (0.80)	16 - 14	
11	TH1614N	1/4	1.106	0.252	0.472	0.031 (0.80)	16 - 14	
12	TH1638N	3/8	1.256	0.413	0.539	0.031 (0.80)	16 - 14	
13	TH1656N	5/16	1.106	0.331	0.472	0.031 (0.80)	16 - 14	
14	TH2208N	#8	0.854	0.169	0.315	0.030 (0.75)	22 - 16	
15	TH2210N	#10	0.854	0.209	0.315	0.030 (0.75)	22 - 16	
16	TH2214N	1/4	1.087	0.252	0.457	0.030 (0.75)	22 - 16	
17	TH2238N	3/8	1.24	0.413	0.539	0.030 (0.75)	22 - 16	
18	TH2256N	5/16	1.087	0.331	0.457	0.030 (0.75)	22 - 16	

Non-Insulated(S)

Wire Terminals / Spade

Non-Insulated(S)

Wire Terminals / Spade / Non-Insulated(S)



Installation Information

Manufacturer	Tools	Color	Code
-			

#	Cat.No	Stud/Tab		Dimension (Inch)					Wire Range
		Size	A	B	C	D	H	A.W.G	

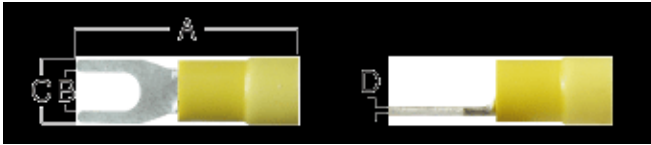
No items in this section.

Vinyl-Insulated(VS)

Wire Terminals / Spade

Vinyl-Insulated(VS)

Wire Terminals / Spade / Vinyl-Insulated(VS)



Installation Information

Manufacturer	Tools	Color	Code
-			

#	Cat.No	Stud/Tab		Dimension (Inch)				Wire Range
		Size	A	B	C	D	A.W.G	

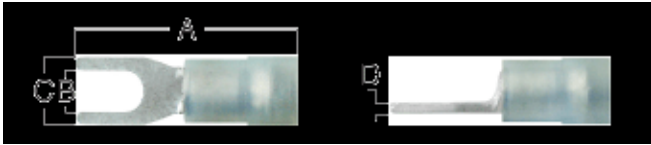
No items in this section.

Nylon-Insulated(AES)

Wire Terminals / Spade

Nylon-Insulated(AES)

Wire Terminals / Spade / Nylon-Insulated(AES)



Installation Information

Manufacturer	Tools	Color	Code
-			

#	Cat.No	Stud/Tab		Dimension (Inch)				Wire Range
		Size	A	B	C	D	A.W.G	

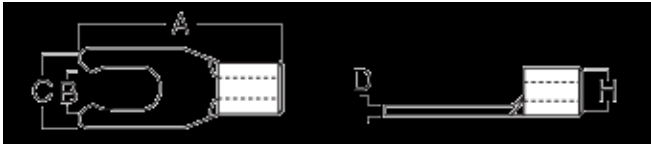
No items in this section.

Non-Insulated (LS)

Wire Terminals / Locking

Non-Insulated (LS)

Wire Terminals / Locking / Non-Insulated (LS)



Installation Information

Manufacturer	Tools	Color	Code
-			

#	Cat.No	Stud/Tab		Dimension (Inch)					Wire Range
		Size	A	B	C	D	H	A.W.G	

No items in this section.

Vinyl-Insulated (VLS)

Wire Terminals / Locking

Vinyl-Insulated (VLS)

Wire Terminals / Locking / Vinyl-Insulated (VLS)



Installation Information

Manufacturer	Tools	Color	Code
-			

#	Cat.No	Stud/Tab	Dimension (Inch)				Wire Range
		Size	A	B	C	D	A.W.G

No items in this section.

Nylon-Insulated (AELS)

Wire Terminals / Locking

Nylon-Insulated (AELS)

Wire Terminals / Locking / Nylon-Insulated (AELS)



Installation Information

Manufacturer	Tools	Color	Code
-			

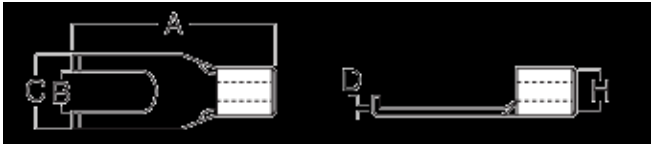
#	Cat.No	Stud/Tab	Dimension (Inch)				Wire Range
		Size	A	B	C	D	A.W.G
No items in this section.							

Non-Insulated (FS)

Wire Terminals / Flange

Non-Insulated (FS)

Wire Terminals / Flange / Non-Insulated (FS)



Installation Information

Manufacturer	Tools	Color	Code
-			

#	Cat.No	Stud/Tab		Dimension (Inch)					Wire Range
		Size	A	B	C	D	H	A.W.G	
No items in this section.									

Vinyl-Insulated (VFS)

Wire Terminals / Flange

Vinyl-Insulated (VFS)

Wire Terminals / Flange / Vinyl-Insulated (VFS)



Installation Information

Manufacturer	Tools	Color	Code
-			

#	Cat.No	Stud/Tab		Dimension (Inch)				Wire Range
		Size	A	B	C	D	A.W.G	
No items in this section.								

Vinyl-Insulated (VFS-C)

Wire Terminals / Flange

Vinyl-Insulated (VFS-C)

Wire Terminals / Flange / Vinyl-Insulated (VFS-C)



Installation Information

Manufacturer	Tools	Color	Code
-			

#	Cat.No	Stud/Tab	Dimension (Inch)				Wire Range
		Size	A	B	C	D	A.W.G

No items in this section.

Nylon-Insulated (AEFS)

Wire Terminals / Flange

Nylon-Insulated (AEFS)

Wire Terminals / Flange / Nylon-Insulated (AEFS)



Installation Information

Manufacturer	Tools	Color	Code
-			

#	Cat.No	Stud/Tab		Dimension (Inch)				Wire Range
		Size	A	B	C	D	A.W.G	

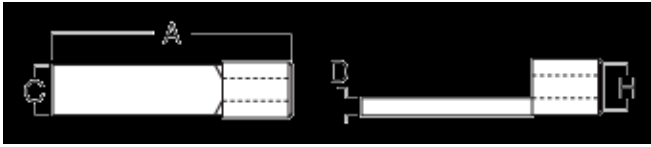
No items in this section.

Non-Insulated (BL)

Wire Terminals / Blade

Non-Insulated (BL)

Wire Terminals / Blade / Non-Insulated (BL)



Installation Information

Manufacturer	Tools	Color	Code
-			

#	Cat.No	Dimension (Inch)				Wire Range
		A	C	D	H	A.W.G

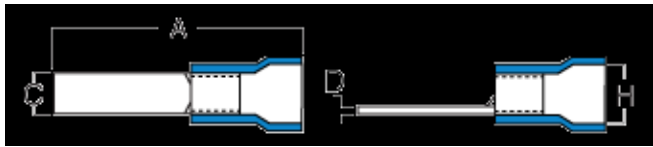
No items in this section.

Vinyl-Insulated (VBL)

Wire Terminals / Blade

Vinyl-Insulated (VBL)

Wire Terminals / Blade / Vinyl-Insulated (VBL)



Installation Information

Manufacturer	Tools	Color	Code
-			

#	Cat.No	Dimension (Inch)				Wire Range
		A	C	D	H	A.W.G

No items in this section.

Nylon-Insulated (AEBL)

Wire Terminals / Blade

Nylon-Insulated (AEBL)

Wire Terminals / Blade / Nylon-Insulated (AEBL)



Installation Information

Manufacturer	Tools	Color	Code
-			

#	Cat.No	Dimension (Inch)				Wire Range
		A	C	D	H	A.W.G

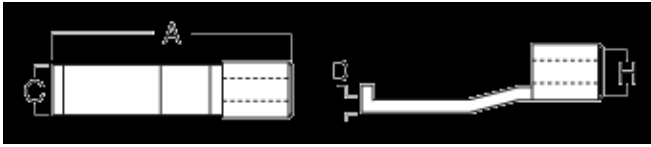
No items in this section.

Non-Insulated (HBL)

Wire Terminals / Lipped

Non-Insulated (HBL)

Wire Terminals / Lipped / Non-Insulated (HBL)



Installation Information

Manufacturer	Tools	Color	Code
-			

#	Cat.No	Dimension (Inch)				Wire Range
		A	C	D	H	A.W.G

No items in this section.

Vinyl-Insulated (VHBL)

Wire Terminals / Lipped

Vinyl-Insulated (VHBL)

Wire Terminals / Lipped / Vinyl-Insulated (VHBL)



Installation Information

Manufacturer	Tools	Color	Code
-			

#	Cat.No	Dimension (Inch)				Wire Range
		A	C	D	H	A.W.G

No items in this section.

Nylon-Insulated (AEHBL)

Wire Terminals / Lipped

Nylon-Insulated (AEHBL)

Wire Terminals / Lipped / Nylon-Insulated (AEHBL)



Installation Information

Manufacturer	Tools	Color	Code
-			

#	Cat.No	Dimension (Inch)				Wire Range
		A	C	D	H	A.W.G
No items in this section.						

105 ° C 600 Volts Ma

Wire Terminals / Pin

105 ° C 600 Volts Ma

Wire Terminals / Pin / 105 ° C 600 Volts Ma



Installation Information

Manufacturer	Tools	Color	Code
-			

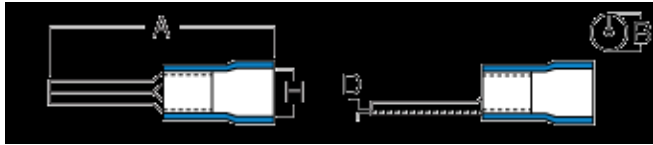
#	Cat.No	Dimension (Inch)				Wire Range
		A	C	D	H	A.W.G
No items in this section.						

105 ° C 600 Volts Max

Wire Terminals / Pin

105 ° C 600 Volts Max

Wire Terminals / Pin / 105 ° C 600 Volts Max



Installation Information

Manufacturer	Tools	Color	Code
-			

#	Cat.No	Dimension (Inch)				Wire Range
		A	C	D	H	A.W.G

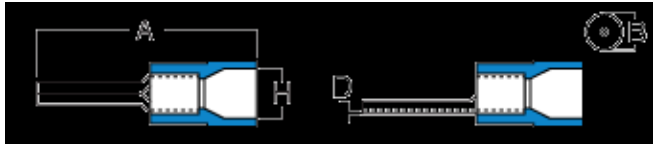
No items in this section.

105 ° C 600 Volts Max

Wire Terminals / Pin

105 ° C 600 Volts Max

Wire Terminals / Pin / 105 ° C 600 Volts Max



Installation Information

Manufacturer	Tools	Color	Code
-			

#	Cat.No	Dimension (Inch)				Wire Range
		A	C	D	H	A.W.G

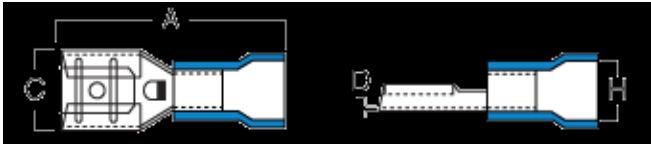
No items in this section.

Vinyl-Insulated (VF)

Wire Terminals / Female

Vinyl-Insulated (VF)

Wire Terminals / Female / Vinyl-Insulated (VF)



Installation Information

Manufacturer	Tools	Color	Code
-			

#	Cat.No	Stud/Tab	Dimension (Inch)				Wire Range
		Height * Width	A	C	D	H	A.W.G
No items in this section.							

Vinyl-Fully (VF-A)

Wire Terminals / Female

Vinyl-Fully (VF-A)

Wire Terminals / Female / Vinyl-Fully (VF-A)



Installation Information

Manufacturer	Tools	Color	Code
-			

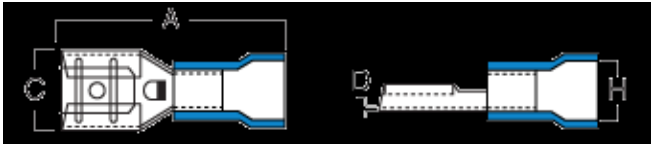
#	Cat.No	Stud/Tab		Dimension (Inch)				Wire Range
		Height * Width	A	C	D	H	A.W.G	
No items in this section.								

Nylon-Insulated (AEF)

Wire Terminals / Female

Nylon-Insulated (AEF)

Wire Terminals / Female / Nylon-Insulated (AEF)



Installation Information

Manufacturer	Tools	Color	Code
-			

#	Cat.No	Stud/Tab		Dimension (Inch)				Wire Range
		Height * Width	A	C	D	H	A.W.G	
No items in this section.								

Nylon-Fully (AEF-A)

Wire Terminals / Female

Nylon-Fully (AEF-A)

Wire Terminals / Female / Nylon-Fully (AEF-A)



Installation Information

Manufacturer	Tools	Color	Code
-	-	-	-

#	Cat.No	Stud/Tab	Dimension (Inch)				Wire Range
		Height * Width	A	C	D	H	A.W.G

No items in this section.

Nylon-Fully (AEF-AL)

Wire Terminals / Female

Nylon-Fully (AEF-AL)

Wire Terminals / Female / Nylon-Fully (AEF-AL)



Installation Information

Manufacturer	Tools	Color	Code
-			

#	Cat.No	Stud/Tab	Dimension (Inch)				Wire Range
		Height * Width	A	C	D	H	A.W.G
No items in this section.							

AL-Series-Nylon (AEM-AL)

Wire Terminals / Male-D

AL-Series-Nylon (AEM-AL)

Wire Terminals / Male-D / AL-Series-Nylon (AEM-AL)



Installation Information

Manufacturer	Tools	Color	Code
-			

#	Cat.No	Stud/Tab	Dimension (Inch)				Wire Range
		Height * Width	A	C	D	H	A.W.G
No items in this section.							

Vinyl-Insulated (VM)

Wire Terminals / Male-D

Vinyl-Insulated (VM)

Wire Terminals / Male-D / Vinyl-Insulated (VM)



Installation Information

Manufacturer	Tools	Color	Code
-			

#	Cat.No	Stud/Tab	Dimension (Inch)				Wire Range
		Height * Width	A	C	D	H	A.W.G
No items in this section.							

Nylon-Insulated (AEM)

Wire Terminals / Male-D

Nylon-Insulated (AEM)

Wire Terminals / Male-D / Nylon-Insulated (AEM)



Installation Information

Manufacturer	Tools	Color	Code
-			

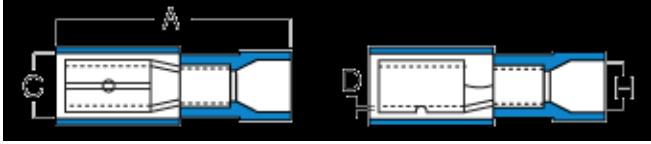
#	Cat.No	Stud/Tab		Dimension (Inch)				Wire Range
		Height * Width	A	C	D	H	A.W.G	
No items in this section.								

Nylon-Insulated (AEF)

Wire Terminals / Bullet

Nylon-Insulated (AEF)

Wire Terminals / Bullet / Nylon-Insulated (AEF)



Installation Information

Manufacturer	Tools	Color	Code
-			

#	Cat.No	Dimension (Inch)				Wire Range
		A	C	D	H	A.W.G
No items in this section.						

Vinyl-Insulated (VM)

Wire Terminals / Male-B

Vinyl-Insulated (VM)

Wire Terminals / Male-B / Vinyl-Insulated (VM)



Installation Information

Manufacturer	Tools	Color	Code
-			

#	Cat.No	Dimension (Inch)				Wire Range
		A	C	D	H	A.W.G
No items in this section.						

Nylon-Insulated (AEM)

Wire Terminals / Male-B

Nylon-Insulated (AEM)

Wire Terminals / Male-B / Nylon-Insulated (AEM)



Installation Information

Manufacturer	Tools	Color	Code
-			

#	Cat.No	Dimension (Inch)				Wire Range
		A	C	D	H	A.W.G

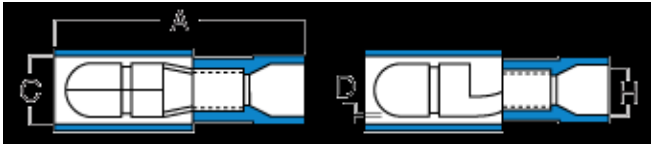
No items in this section.

Nylon-Fully (AEM-A)

Wire Terminals / Male-B

Nylon-Fully (AEM-A)

Wire Terminals / Male-B / Nylon-Fully (AEM-A)



Installation Information

Manufacturer	Tools	Color	Code
-			

#	Cat.No	Dimension (Inch)				Wire Range
		A	C	D	H	A.W.G
No items in this section.						

Vinyl-Insulated (VPB)

Wire Terminals / Piggyback

Vinyl-Insulated (VPB)

Wire Terminals / Piggyback / Vinyl-Insulated (VPB)



Installation Information

Manufacturer	Tools	Color	Code
-			

#	Cat.No	Stud/Tab		Dimension (Inch)					Wire Range
		Height * Width	A	B	C	D	H	A.W.G	
No items in this section.									

Nylon-Insulated (AEPB)

Wire Terminals / Piggyback

Nylon-Insulated (AEPB)

Wire Terminals / Piggyback / Nylon-Insulated (AEPB)



Installation Information

Manufacturer	Tools	Color	Code
-			

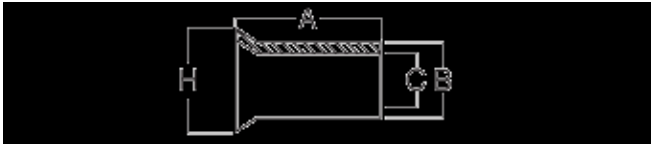
#	Cat.No	Stud/Tab		Dimension (Inch)					Wire Range
		Height * Width	A	B	C	D	H	A.W.G	
No items in this section.									

Non-Insulated

Wire Terminals / End terminals

Non-Insulated

Wire Terminals / End terminals / Non-Insulated



Installation Information

Manufacturer	Tools	Color	Code
-			

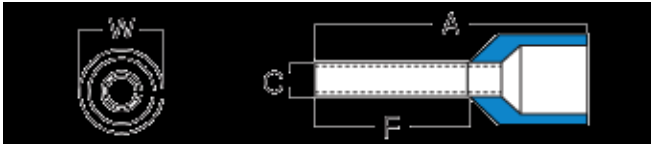
#	Cat.No	Dimension (Inch)				Wire Range
		A	B	C	H	A.W.G
No items in this section.						

Ferrules-Single

Wire Terminals / End terminals

Ferrules-Single

Wire Terminals / End terminals / Ferrules-Single



Installation Information

Manufacturer	Tools	Color	Code
-			

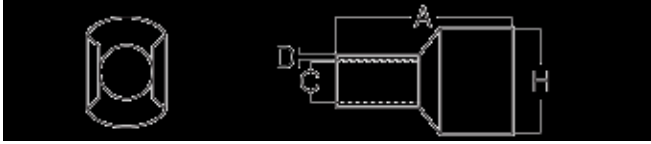
#	Cat.No	Dimension (Inch)					Color System			Wire Range
		A	B	C	H	French	German	Din	A.W.G	
No items in this section.										

Ferrules-Twin

Wire Terminals / End terminals

Ferrules-Twin

Wire Terminals / End terminals / Ferrules-Twin



Installation Information

Manufacturer	Tools	Color	Code
-			

#	Cat.No	Dimension (Inch)				Wire Range
		A	C	D	H	A.W.G

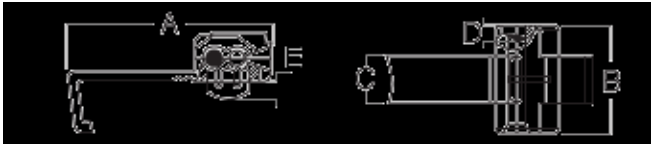
No items in this section.

Splice-3M

Wire Terminals / Splice

Splice-3M

Wire Terminals / Splice / Splice-3M



Installation Information

Manufacturer	Tools	Color	Code
-			

#	Cat.No	Dimension (Inch)					Wire Range
		A	B	C	D	E	A.W.G

No items in this section.

T-TAP-T

Wire Terminals / Splice

T-TAP-T

Wire Terminals / Splice / T-TAP-T



Installation Information

Manufacturer	Tools	Color	Code
-			

#	Cat.No	Dimension (Inch)					Wire Range
		A	B	C	D	E	A.W.G
No items in this section.							

Closed-End

Wire Terminals / Splice

Closed-End

Wire Terminals / Splice / Closed-End



Installation Information

Manufacturer	Tools	Color	Code
-			

#	Cat.No	Dimension (Inch)				Wire Range
		A	C	D	H	A.W.G

No items in this section.

ASK

Wire Terminals / Splice

ASK

Wire Terminals / Splice / ASK

Installation Information

Manufacturer	Tools	Color	Code
--------------	-------	-------	------

-

#	Cat.No	Dimension (Inch)				Wire Range
		A	B	D	H	A.W.G

No items in this section.

B

Wire Terminals / Splice

B

Wire Terminals / Splice / B

Installation Information

Manufacturer	Tools	Color	Code
-			

#	Cat.No	Material	Dimension (Inch)				Wire Range
			A	D	E	H	A.W.G

No items in this section.

PT

Wire Terminals / Splice

PT

Wire Terminals / Splice / PT

Installation Information

Manufacturer	Tools	Color	Code
-			

#	Cat.No	Material	Dimension (Inch)				Wire Range
			A	D	E	H	A.W.G

No items in this section.

AEB

Wire Terminals / Splice

AEB

Wire Terminals / Splice / AEB

Installation Information

Manufacturer	Tools	Color	Code
-			

#	Cat.No	Material	Dimension (Inch)				Wire Range
			A	D	E	H	A.W.G

No items in this section.

VB

Wire Terminals / Splice

VB

Wire Terminals / Splice / VB

Installation Information

Manufacturer	Tools	Color	Code
-			

#	Cat.No	Material	Dimension (Inch)				Wire Range
			A	D	E	H	A.W.G

No items in this section.

VPT

Wire Terminals / Splice

VPT

Wire Terminals / Splice / VPT

Installation Information

Manufacturer	Tools	Color	Code
-			

#	Cat.No	Dimension (Inch)				Wire Range
		A	D	E	H	A.W.G

No items in this section.
