

Locking Catalog

Wire Terminals

CATEGORY EDITION

Table of Contents

Catalog structure and section page index

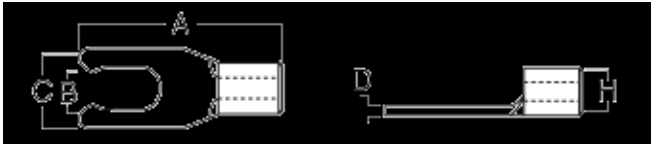
Non-Insulated (LS)	3
Vinyl-Insulated (VLS)	5
Nylon-Insulated (AEELS)	7

Non-Insulated (LS)

Wire Terminals / Locking

Non-Insulated (LS)

Wire Terminals / Locking / Non-Insulated (LS)



Installation Information

Manufacturer	Tools	Color	Code
-			

#	Cat.No	Stud/Tab		Dimension (Inch)					Wire Range
		Size	A	B	C	D	H	A.W.G	

No items in this section.

Vinyl-Insulated (VLS)

Wire Terminals / Locking

Vinyl-Insulated (VLS)

Wire Terminals / Locking / Vinyl-Insulated (VLS)



Installation Information

Manufacturer	Tools	Color	Code
-			

#	Cat.No	Stud/Tab	Dimension (Inch)				Wire Range
		Size	A	B	C	D	A.W.G

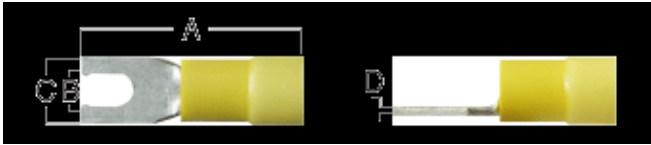
No items in this section.

Nylon-Insulated (AELS)

Wire Terminals / Locking

Nylon-Insulated (AELS)

Wire Terminals / Locking / Nylon-Insulated (AELS)



Installation Information

Manufacturer	Tools	Color	Code
-			

#	Cat.No	Stud/Tab		Dimension (Inch)				Wire Range
		Size	A	B	C	D	A.W.G	

No items in this section.