

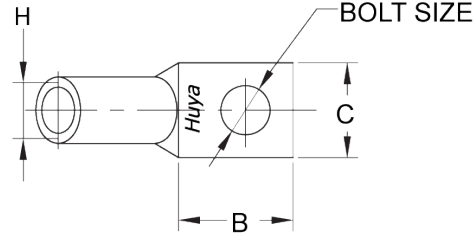
THE INFORMATION ON THIS DRAWING IS THE PROPERTY OF CELESTRA, IS DISCLOSED IN CONFIDENCE AND NOT TO BE REPRODUCED, USED OR DISCLOSED EXCEPT FOR WHICH FURNISHED.

| CELESTRA CAT.NO | WIRE SIZE | | BOLT SIZE | B MIN | C ±0.04 | D ±0.015 | H ±0.01 |
|--------------------|-----------|--|--------------|----------|------------|-------------|------------|
| | CODE | FLEX | | | | | |
| DA3014F-260 | 3/0 AWG | 150 Navy 2/0 Weld 325/24 = 131 kcmil 133/.0316 259/.0227 427/.0177 | 1/4 | 0.64 | 1.00 | 0.13 | 0.50 |

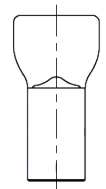
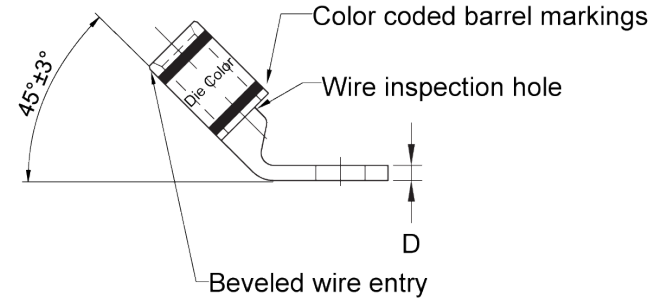
- NOTE:
1. ALL DIMENSIONS ARE IN INCHES UNLESS OTHERWISE SPECIFIED.
 2. ALL DA,DB,LA,LB,WP,AL,AS AND J SERIES OF CAT.NO.S ARE LISTED BY "UNDERWRITERS INC." AND "CSA" FOR USE ON CODE WIRES AND FLEX/24 STRANDED CABLES.

PRE-FIX CAT.NO.WITH "L" HAS NOT PEEP HOLE UNLESS OTHERWISE SPECIFIED IN THE SUFFIX OF THE CAT.NO. WITH "P".

MATERIAL: HIGH CONDUCTIVITY WROUGHT COPPER
 FINISH: ELECTOR-TIN PLATE UNLESS OTHERWISE SPECIFIED PLATE PER MIL - T -16366.
 SUFFIX CAT.NO.WITH "SP" FOR SILVER.



INSTALLATION GUIDE
 DIE CODE = 50
 DIE COLOR = Orange



HUYA[®]
 www.huyaco.com

CELESTRA CORPORATION
 76. Huancun Rd. Zhongcun Town.
 Panyu Dist. Guangzhou 511495.

TITLE **WIRE CONNECTORS AND SOLDERING LUGS FOR CODE AND FLEX CABLE**

| REV | DATE | DWN | CHK | DESCRIPTION | ECN |
|-----|-----------|-----------|-----------|-------------------------------------|-----|
| 00 | 18-Apr-26 | Ruby Feng | Sinia Qiu | Celestra Standards Spec. Initialed. | |

| | | | | | | |
|----------|----------------------------------|----------|-------------|-------|------|------------------------|
| MATERIAL | HIGH-CONDUCTIVITY WROUGHT COPPER | PRT. NO. | DA3014F-260 | SCALE | NTS | THRID ANGLE PROJECTION |
| FINISH | ELECTRO TIN PLATE | DWG. NO. | 186-cp1050 | UNIT | INCH | |

