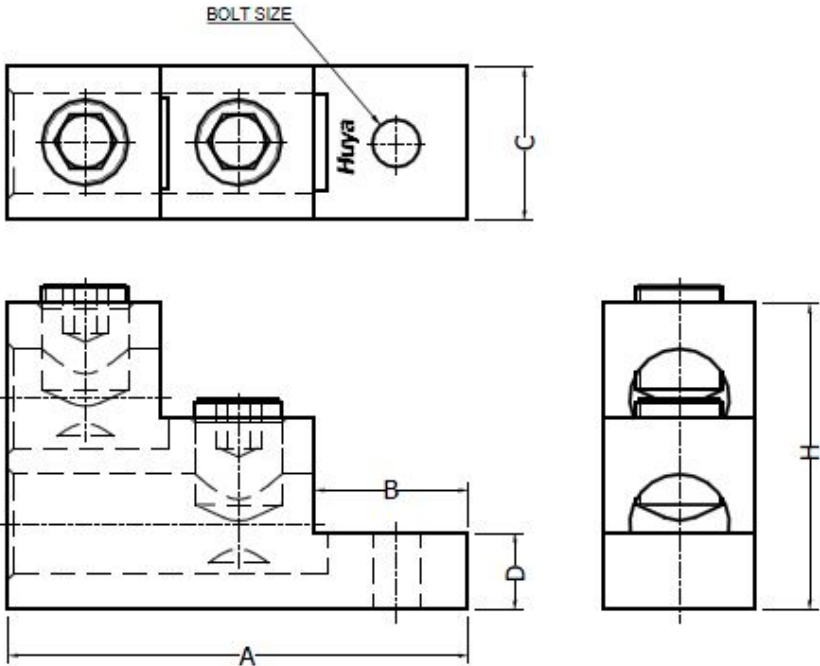


CELESTRA CAT.NO	APP CABLE WIRE RANGE	BOLT SIZE	KEX KEY	A ±0.03	B ±0.02	C ±0.02	D ±0.015	H ±0.02
AM3106-21S	#6 AWG - 300 kcmil	5/16	5/16	3.00	1.00	0.99	0.49	1.99

THE INFORMATION ON THIS DRAWING IS THE PROPERTY OF CELESTRA CORPORATION, IS DISCLOSED IN CONFIDENCE, AND IS NOT TO BE REPRODUCED,USED OR DISCLOSED EXCEPT FOR THE PURPOSE FOR WHICH FURNISHED.

NOTES:

- ALL DIMENSIONS ARE IN INCHES UNLESS OTHERWISE SPECIFIED.
- LUG MATERIAL: ALUMINUM ALLOY 6061-T6.
FINISH: EIECTRO-TIN PLATE.
- SCREW MATERIAL: ALUMINUM ALLOY 2024-T4.
FINISH: EIECTRO-TIN PLATED.
- ALL MATERIALS ARE COMPLIED WITH THE RESTRICTION OF HAZARDOUS SUBSTANCES(RoHS) DIRECTIVE(2002/95/EC).
- CONNECTOR IS FOR COPPER AND ALUMINUM CONDUCTORS.



00	23-Aug-25	Hedy Xiao	Sinia Qiu	Celestra Standards Spec. Initialed.	N/A
REV	DATE	DWN	CHK	DESCRIPTION	ECN

<div> <div>Huya</div> <div> CELESTRA CORPORATION 76,ZHONGSI HUANCUN ROAD,ZHONGCUN TOWN, PANYU DIST,GUANGZHOU,511495 CHINA www.celestra.cn </div> </div>		<div>ALUMINUM MECHANICAL LUGS</div> <div>#6 AWG - 300 kcmil</div>			
MATERIAL	SEE NOTES	PRT. NO.	AM3106-21S	SCALE	NTS
FINISH	SEE NOTES	DWG. NO.	186-0113042088	UNIT	INCH
				THIRD ANGLE PROJECTION	