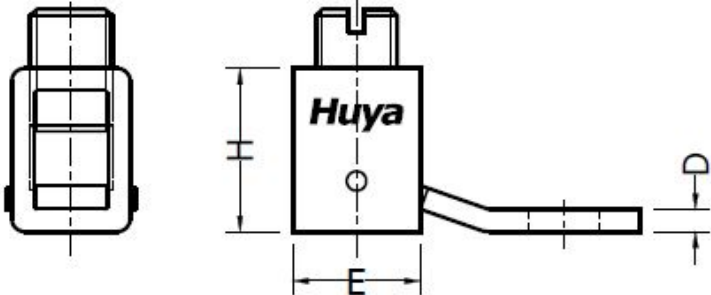
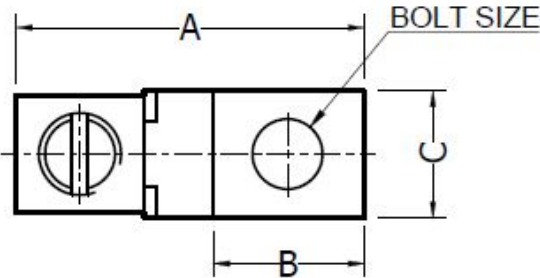


CELESTRA CAT.NO	APP CABLE WIRE RANGE	BOLT SIZE	KEX KEY	A ±0.04	B ±0.02	C ±0.02	D ±0.015	E ±0.02	H ±0.02
CM5140	#4/0-500	3/8	3/4	3.16	1.69	1.50	0.19	1.38	1.65

NOTES:

- ALL DIMENSIONS ARE IN INCHES UNLESS OTHERWISE SPECIFIED.
- LUG MATERIAL: HIGH CONDUCTIVITY WROUGHT COPPER.
- SCREW MATERIAL: STEEL.  
FINISH: ZINC PLATED.
- ALL MATERIALS ARE COMPLIED WITH THE RESTRICTION OF HAZARDOUS SUBSTANCES(RoHS) DIRECTIVE(2002/95/EC).
- CONNECTOR IS FOR COPPER CONDUCTORS.



00	23-Aug-25	Hedy Xiao	Sinia Qiu	Celestra Standards Spec. Initialed.	N/A
REV	DATE	DWN	CHK	DESCRIPTION	ECN

<b>Huya</b>		<b>CELESTRA CORPORATION</b> 76,ZHONGSI HUANCUN ROAD,ZHONGCUN TOWN, PANYU DIST,GUANGZHOU,511495 CHINA www.celestra.cn	
TITLE <b>COPPER MECHANICAL LUGS</b> <b>#4/0-500</b>			
MATERIAL	SEE NOTES	PRT. NO. CM5140	SCALE NTS
FINISH	SEE NOTES	DWG. NO. 186-0113042106	UNIT INCH
			THIRD ANGLE PROJECTION 