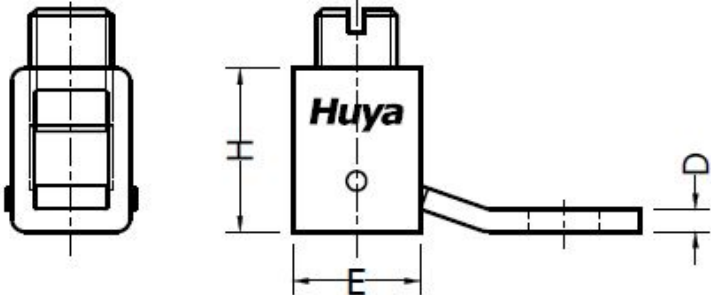
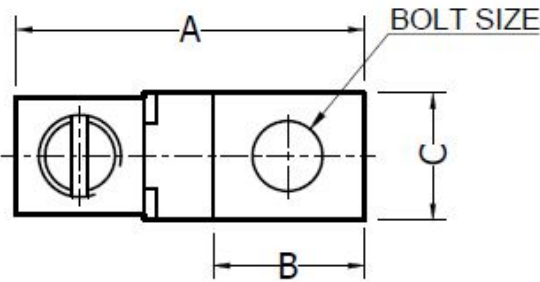


CELESTRA CAT.NO	APP CABLE WIRE RANGE	BOLT SIZE	KEY KEY	A ±0.04	B ±0.02	C ±0.02	D ±0.015	E ±0.02	H ±0.02
CM1004T	#4-#1/0	1/4	SLOT	1.53	0.84	0.62	0.13	0.62	0.77

NOTES:

- ALL DIMENSIONS ARE IN INCHES UNLESS OTHERWISE SPECIFIED.
- LUG MATERIAL: HIGH CONDUCTIVITY WROUGHT COPPER.
- SCREW MATERIAL: STEEL.  
FINISH: ZINC PLATED.
- ALL MATERIALS ARE COMPLIED WITH THE RESTRICTION OF HAZARDOUS SUBSTANCES(RoHS) DIRECTIVE(2002/95/EC).
- CONNECTOR IS FOR COPPER CONDUCTORS.



00	23-Aug-25	Hedy Xiao	Sinia Qiu	Celestra Standards Spec. Initialed.	N/A
REV	DATE	DWN	CHK	DESCRIPTION	ECN

<b>Huya</b>		<b>CELESTRA CORPORATION</b> 76,ZHONGSI HUANCUN ROAD,ZHONGCUN TOWN, PANYU DIST,GUANGZHOU,511495 CHINA www.celestra.cn	
TITLE <b>COPPER MECHANICAL LUGS</b> <b>#4-#1/0</b>			
MATERIAL	SEE NOTES	PRT. NO. CM1004T	SCALE NTS
FINISH	SEE NOTES	DWG. NO. 186-0113042109	UNIT INCH
			THIRD ANGLE PROJECTION 