

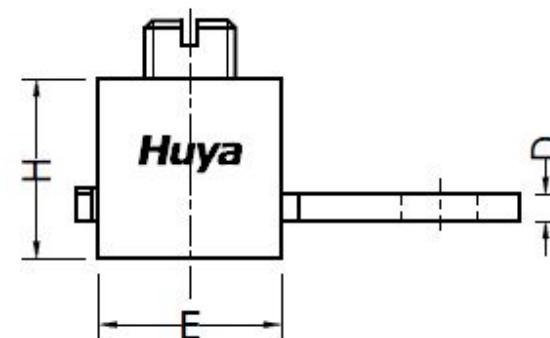
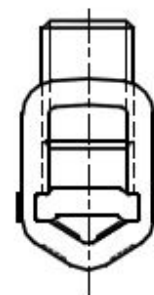
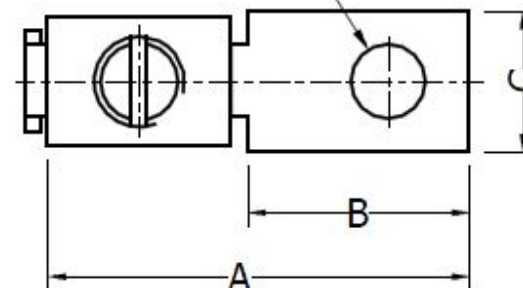
THE INFORMATION ON THIS DRAWING IS THE PROPERTY OF CELESTRA CORPORATION, IS DISCLOSED IN CONFIDENCE, AND IS NOT TO BE REPRODUCED, USED OR DISCLOSED EXCEPT FOR THE PURPOSE FOR WHICH FURNISHED.

CELESTRA CAT.NO	APP CABLE WIRE RANGE	BOLT SIZE	KEY KEY	A	B	C	D	E	H
CM1161A	#600-1000	1/2	1.125	±0.04	±0.02	±0.02	±0.015	±0.02	±0.02
				5.13	2.83	2.00	0.25	1.87	2.34

## NOTES:

1. ALL DIMENSIONS ARE IN INCHES UNLESS OTHERWISE SPECIFIED.
2. LUG MATERIAL: HIGH CONDUCTIVITY WROUGHT COPPER.
3. SCREW MATERIAL: STEEL.  
FINISH: ZINC PLATED.
4. ALL MATERIALS ARE COMPLIED WITH THE RESTRICTION OF HAZARDOUS SUBSTANCES(RoHS) DIRECTIVE(2002/95/EC).
5. CONNECTOR IS FOR COPPER CONDUCTORS.

BOLT SIZE



**Huya**

**CELESTRA CORPORATION**

76,ZHONGSI HUANCUN ROAD,ZHONGCUN TOWN,  
PANYU DIST, GUANGZHOU, 511495 CHINA

www.celestra.cn

## COPPER MECHANICAL LUGS #600-1000

TITLE

MATERIAL

SEE NOTES

PRT. NO.

CM1161A

SCALE

NTS

THIRD ANGLE  
PROJECTION

FINISH

SEE NOTES

DWG. NO.

186-0113042113

UNIT

INCH

00	23-Aug-25	Hedy Xiao	Sinia Qiu	Celestra Standards Spec. Initialed.	N/A
REV	DATE	DWN	CHK	DESCRIPTION	ECN