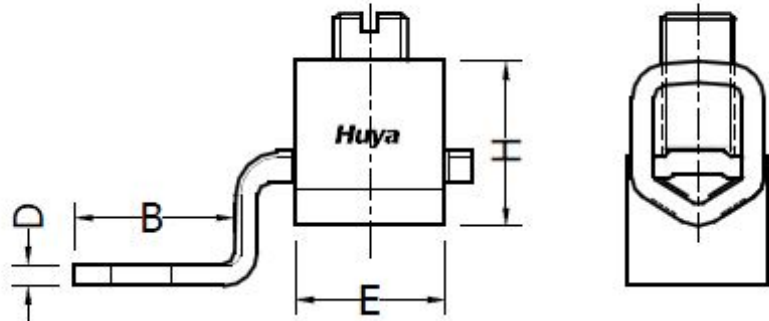
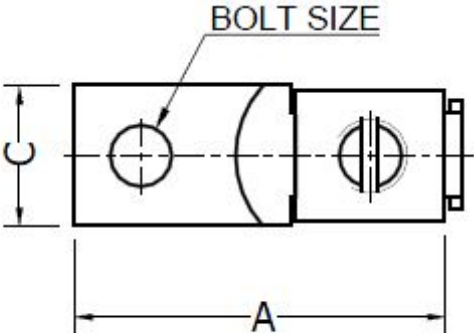


CELESTRA CAT.NO	APP CABLE WIRE RANGE	BOLT SIZE	KEY KEY	A	B	C	D	E	H
CM0414B	#14-#4	1/4	SLOT	±0.04 1.31	±0.02 0.57	±0.02 0.50	±0.015 0.08	±0.02 0.43	±0.02 0.58

THE INFORMATION ON THIS DRAWING IS THE PROPERTY OF CELESTRA CORPORATION, IS DISCLOSED IN CONFIDENCE, AND IS NOT TO BE REPRODUCED,USED OR DISCLOSED EXCEPT FOR THE PURPOSE FOR WHICH FURNISHED.

NOTES:

- 1. ALL DIMENSIONS ARE IN INCHES UNLESS OTHERWISE SPECIFIED.
- 2. LUG MATERIAL: HIGH CONDUCTIVITY WROUGHT COPPER.
- 3. SCREW MATERIAL: STEEL.  
FINISH: ZINC PLATED.
- 4. ALL MATERIALS ARE COMPLIED WITH THE RESTRICTION OF HAZARDOUS SUBSTANCES(RoHS) DIRECTIVE(2002/95/EC).
- 5. CONNECTOR IS FOR COPPER CONDUCTORS.



00	01-Jul-25	Hedy Xiao	Sinia Qiu	Celestra Standards Spec. Initialed.	N/A
REV	DATE	DWN	CHK	DESCRIPTION	ECN

<b>Huya</b>		<b>CELESTRA CORPORATION</b> 76,ZHONGSI HUANCUN ROAD,ZHONGCUN TOWN, PANYU DIST,GUANGZHOU,511495 CHINA www.celestra.cn			
TITLE <b>COPPER MECHANICAL LUGS</b> <b>#14-#4</b>					
MATERIAL SEE NOTES		PRT. NO. CM0414B		SCALE NTS	
FINISH SEE NOTES		DWG. NO. 186-0113042114		UNIT INCH	
				THIRD ANGLE PROJECTION 