

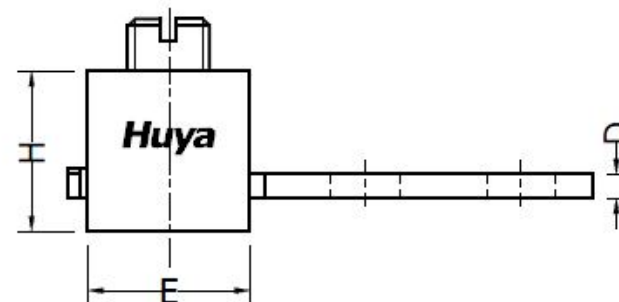
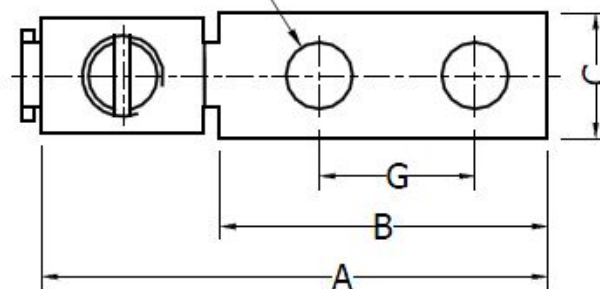
THE INFORMATION ON THIS DRAWING IS THE PROPERTY OF CELESTRA CORPORATION,  
IS DISCLOSED IN CONFIDENCE, AND IS NOT TO BE REPRODUCED, USED OR DISCLOSED  
EXCEPT FOR THE PURPOSE FOR WHICH FURNISHED.

CELESTRA CAT.NO	APP CABLE WIRE RANGE	BOLT SIZE	KEY KEY	A ±0.04	B ±0.02	C ±0.02	D ±0.015	E ±0.02	G ±0.01	H ±0.02
CM200801	#8-2/0	1/4	SLOT	2.94	1.88	0.62	0.13	0.62	1.00	0.88

## NOTES:

1. ALL DIMENSIONS ARE IN INCHES UNLESS OTHERWISE SPECIFIED.
2. LUG MATERIAL: HIGH CONDUCTIVITY WROUGHT COPPER.
3. SCREW MATERIAL: STEEL.  
FINISH: ZINC PLATED.
4. ALL MATERIALS ARE COMPLIED WITH THE RESTRICTION OF  
HAZARDOUS SUBSTANCES(RoHS) DIRECTIVE(2002/95/EC).
5. CONNECTOR IS FOR COPPER CONDUCTORS.

BOLT SIZE



**Huya**

**CELESTRA CORPORATION**

76,ZHONGSI HUANCUN ROAD,ZHONGCUN TOWN,  
PANYU DIST, GUANGZHOU, 511495 CHINA

www.celestra.cn

TITLE

**COPPER MECHANICAL LUGS**  
**#8-2/0**

00	23-Aug-25	Hedy Xiao	Sinia Qiu	Celestra Standards Spec. Initialed.	N/A
REV	DATE	DWN	CHK	DESCRIPTION	ECN

MATERIAL	SEE NOTES	PRT. NO.	CM200801	SCALE	NTS	THIRD ANGLE PROJECTION
FINISH	SEE NOTES	DWG. NO.	186-0113042122	UNIT	INCH	