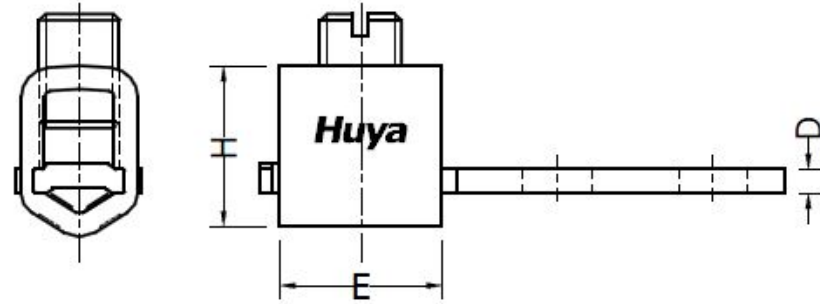
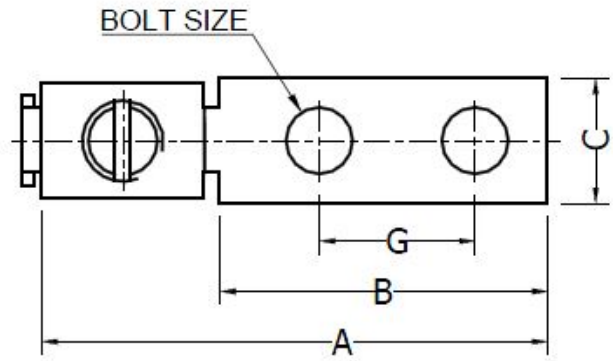


THE INFORMATION ON THIS DRAWING IS THE PROPERTY OF CELESTRA CORPORATION, IS DISCLOSED IN CONFIDENCE, AND IS NOT TO BE REPRODUCED, USED OR DISCLOSED EXCEPT FOR THE PURPOSE FOR WHICH FURNISHED.

CELESTRA CAT.NO	APP CABLE WIRE RANGE	BOLT SIZE	HEX KEY	A	B	C	D	E	G	H
CM116143	600-1000	1/2	1.125	±0.04	±0.02	±0.02	±0.015	±0.02	±0.01	±0.02

NOTES:

1. ALL DIMENSIONS ARE IN INCHES UNLESS OTHERWISE SPECIFIED.
2. LUG MATERIAL: HIGH CONDUCTIVITY WROUGHT COPPER.
3. SCREW MATERIAL: STEEL.
FINISH: ZINC PLATED.
4. ALL MATERIALS ARE COMPLIED WITH THE RESTRICTION OF HAZARDOUS SUBSTANCES (RoHS) DIRECTIVE (2002/95/EC).
5. CONNECTOR IS FOR COPPER CONDUCTORS.



CELESTRA CORPORATION
76, ZHONGSI HUANCUN ROAD, ZHONGCUN TOWN,
PANYU DIST, GUANGZHOU, 511495 CHINA
www.celestra.cn

COPPER MECHANICAL LUGS
600-1000

REV	DATE	DWN	CHK	DESCRIPTION	ECN
00	18-Apr-26	Hedy Xiao	Sinia Qiu	Celestra Standards Spec. Initialed.	N/A

TITLE	MATERIAL	SEE NOTES	PRT. NO.	SCALE	UNIT	THIRD ANGLE PROJECTION
COPPER MECHANICAL LUGS 600-1000	SEE NOTES	SEE NOTES	CM116143	NTS	INCH	
	FINISH	SEE NOTES	DWG. NO.			
			186-0113042126			