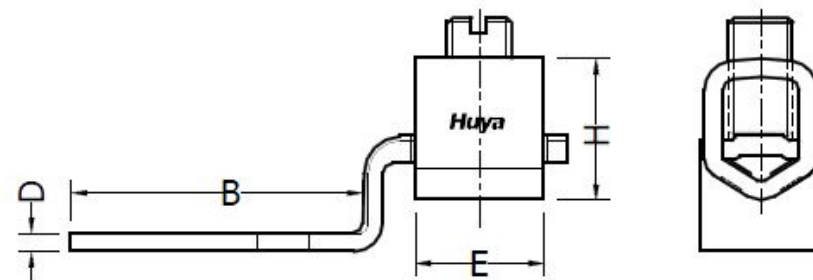
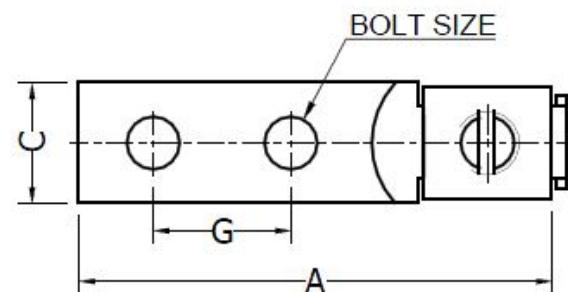


THE INFORMATION ON THIS DRAWING IS THE PROPERTY OF CELESTRA CORPORATION, IS DISCLOSED IN CONFIDENCE, AND IS NOT TO BE REPRODUCED, USED OR DISCLOSED EXCEPT FOR THE PURPOSE FOR WHICH FURNISHED.

CELESTRA CAT.NO	APP CABLE WIRE RANGE	BOLT SIZE	KEX KEY	A ±0.04	B ±0.02	C ±0.02	D ±0.015	E ±0.02	G ±0.01	H ±0.02
CM511043B	#1/0-500	3/8	3/4	6.00	3.77	1.50	0.19	1.53	1.75	1.56

## NOTES:

1. ALL DIMENSIONS ARE IN INCHES UNLESS OTHERWISE SPECIFIED.
2. LUG MATERIAL: HIGH CONDUCTIVITY WROUGHT COPPER.
3. SCREW MATERIAL: STEEL.  
FINISH: ZINC PLATED.
4. ALL MATERIALS ARE COMPLIED WITH THE RESTRICTION OF HAZARDOUS SUBSTANCES(RoHS) DIRECTIVE(2002/95/EC).
5. CONNECTOR IS FOR COPPER CONDUCTORS.



**Huya**

**CELESTRA CORPORATION**

76,ZHONGSI HUANCUN ROAD,ZHONGCUN TOWN,  
PANYU DIST, GUANGZHOU, 511495 CHINA

[www.celestra.cn](http://www.celestra.cn)

## COPPER MECHANICAL LUGS #1/0-500

00	23-Aug-25	Hedy Xiao	Sinia Qiu	Celestra Standards Spec. Initialed.	N/A
REV	DATE	DWN	CHK	DESCRIPTION	ECN

MATERIAL	SEE NOTES	PRT. NO.	CM511043B	SCALE	NTS	THIRD ANGLE PROJECTION
FINISH	SEE NOTES	DWG. NO.	186-0113042131	UNIT	INCH	