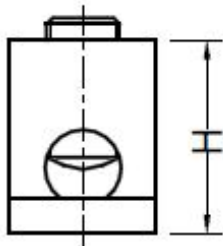
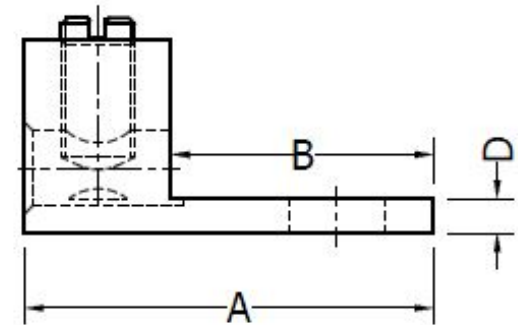
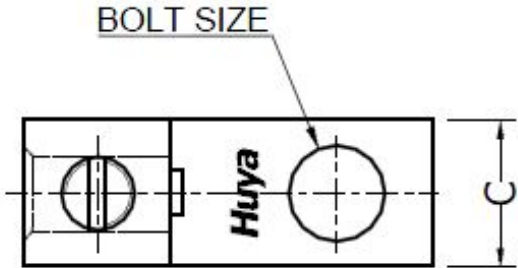


CELESTRA CAT.NO	APP CABLE WIRE RANGE	BOLT SIZE	KEX KEY	A ±0.03	B ±0.02	C ±0.02	D ±0.015	H ±0.02
AM0214	#14 AWG – #2 AWG	1/4	SLOT	1.16	0.69	0.49	0.08	0.55

NOTES:

- ALL DIMENSIONS ARE IN INCHES UNLESS OTHERWISE SPECIFIED.
- LUG MATERIAL: ALUMINUM ALLOY 6061-T6.
FINISH: ELECTRO-TIN PLATE.
- SCREW MATERIAL: ALUMINUM ALLOY 2024-T4.
FINISH: ELECTRO-TIN PLATED.
- ALL MATERIALS ARE COMPLIED WITH THE RESTRICTION OF
HAZARDOUS SUBSTANCES(RoHS) DIRECTIVE(2002/95/EC).
- CONNECTOR IS FOR COPPER AND ALUMINUM CONDUCTORS.



00	23-Aug-25	Hedy Xiao	Sinia Qiu	Celestra Standards Spec. Initialed.	N/A
REV	DATE	DWN	CHK	DESCRIPTION	ECN

<div> <div>Huya</div> <div> CELESTRA CORPORATION 76,ZHONGSI HUANCUN ROAD,ZHONGCUN TOWN, PANYU DIST,GUANGZHOU,511495 CHINA www.celestra.cn </div> </div>		<div>ALUMINUM MECHANICAL LUGS</div> <div>#14 AWG – #2 AWG</div>			
		MATERIAL	SEE NOTES	PRT. NO.	AM0214
FINISH		SEE NOTES	DWG. NO.	186-0113042133	SCALE
					UNIT
					NTS
					INCH
		<div>THIRD ANGLE PROJECTION</div>			