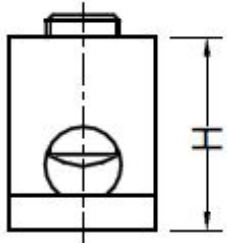
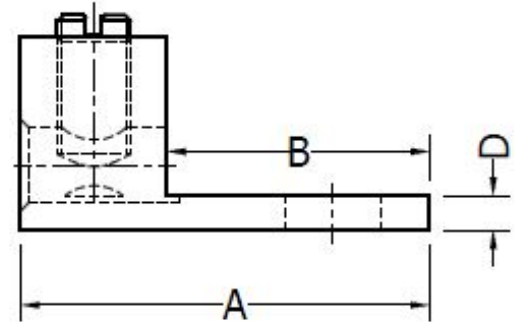
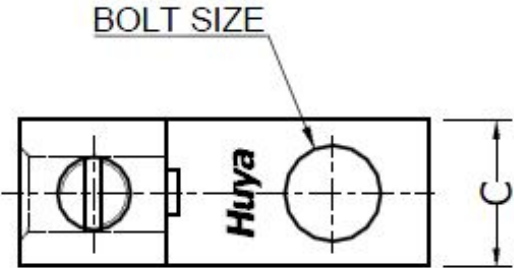


CELESTRA CAT.NO	APP CABLE WIRE RANGE	BOLT SIZE	KEX KEY	A ±0.03	B ±0.02	C ±0.02	D ±0.015	H ±0.02
AM3106	#6 AWG – 300 kcmil	5/16	3/8	2.00	1.00	0.89	0.21	1.05

NOTES:

- ALL DIMENSIONS ARE IN INCHES UNLESS OTHERWISE SPECIFIED.
- LUG MATERIAL: ALUMINUM ALLOY 6061-T6.  
FINISH: ELECTRO-TIN PLATE.
- SCREW MATERIAL: ALUMINUM ALLOY 2024-T4.  
FINISH: ELECTRO-TIN PLATED.
- ALL MATERIALS ARE COMPLIED WITH THE RESTRICTION OF HAZARDOUS SUBSTANCES(RoHS) DIRECTIVE(2002/95/EC).
- CONNECTOR IS FOR COPPER AND ALUMINUM CONDUCTORS.



00	23-Aug-25	Hedy Xiao	Sinia Qiu	Celestra Standards Spec. Initialed.	N/A
REV	DATE	DWN	CHK	DESCRIPTION	ECN

<b>Huya</b>		<b>CELESTRA CORPORATION</b> 76,ZHONGSI HUANCUN ROAD,ZHONGCUN TOWN, PANYU DIST,GUANGZHOU,511495 CHINA www.celestra.cn			
TITLE <b>ALUMINUM MECHANICAL LUGS</b> <b>#6 AWG – 300 kcmil</b>					
MATERIAL SEE NOTES		PRT. NO. AM3106		SCALE NTS	
FINISH SEE NOTES		DWG. NO. 186-0113042137		UNIT INCH	
				THIRD ANGLE PROJECTION 	