

THE INFORMATION ON THIS DRAWING IS THE PROPERTY OF CELESTRA, IS DISCLOSED IN CONFIDENCE AND NOT TO BE REPRODUCED, USED OR DISCLOSED EXCEPT FOR WHICH FURNISHED.

CELESTRA CAT.NO	Wire Range	STUD SIZE	A MAX	B ±0.003	C ±0.008	D ±0.002	H ±0.010
	AWG						
TR3056	3/0	5/16	2.087	0.339	1.063	0.091 (2.30)	0.571

**NOTE:**

1. ALL DIMENSIONS ARE IN INCHES UNLESS OTHERWISE SPECIFIED.
2. ALL DA,DB,LA,LB,WP AND J SERIES OF CAT.NO.S ARE LISTED BY "UNDERWRITERS INC." AND "CSA" FOR USE ON CODE WIRES AND FLEX/24 STRANDED CABLES.

PRE-FIX CAT.NO.WITH "L" HAS NOT PEEP HOLE UNLESS OTHERWISE SPECIFIED IN THE SUFFIX OF THE CAT.NO. WITH "P".

**MATERIAL:**

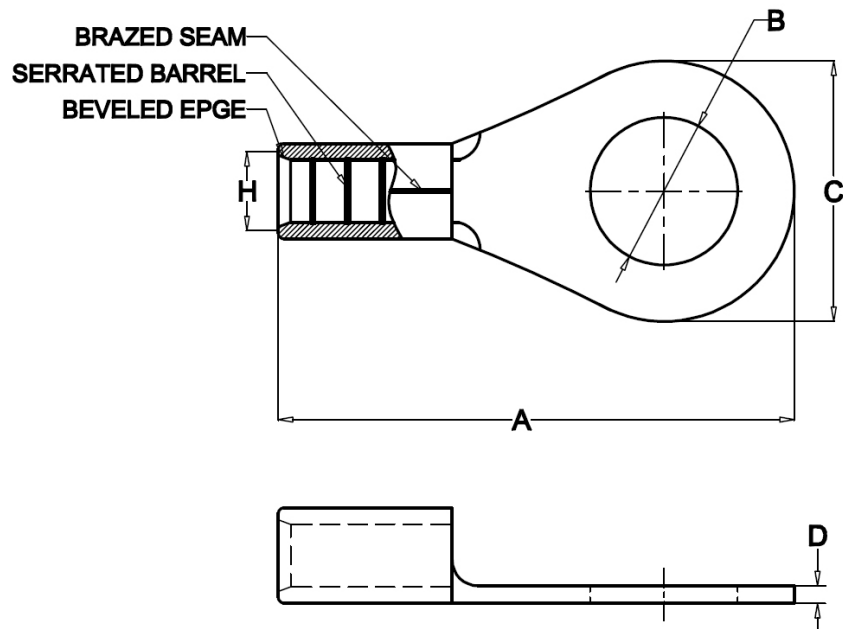
HIGH CONDUCTIVITY WROUGHT COPPER

**FINISH:**

ELECTOR-TIN PLATE UNLESS OTHERWISE SPECIFIED PLATE PER MIL - T -16366.  
SUFFIX CAT.NO.WITH "SP" FOR SILVER.

**INSTALLATION GUIDE**

DIE CODE = \_\_  
DIE COLOR = \_\_



**HUYA®**  
www.huyaco.com

**CELESTRA CORPORATION**

76. Huancun Rd. Zhongcun Town.  
Panyu Dist. Guangzhou 511495.

TITLE **WIRE CONNECTORS AND SOLDERING  
LUGS FOR CODE AND FLEX CABLE**

MATERIAL **HIGH-CONDUCTIVITY  
WROUGHT COPPER**

PRT. NO. **TR3056**

SCALE **NTS**

THIRD ANGLE PROJECTION

FINISH **ELECTRO TIN PLATE**

DWG. NO. **186-cp2246**

UNIT **INCH**



00	23-Aug-25	Ruby Feng	Sinia Qiu	Celestra Standards Spec. Initialed.	
REV	DATE	DWN	CHK	DESCRIPTION	ECN