

THE INFORMATION ON THIS DRAWING IS THE PROPERTY OF CELESTRA, IS DISCLOSED IN CONFIDENCE AND NOT TO BE REPRODUCED, USED OR DISCLOSED EXCEPT FOR WHICH FURNISHED.

| CELESTRA<br>CAT.NO | Wire Range | STUD SIZE | A<br>MAX | B<br>±0.003 | C<br>±0.008 | D<br>±0.002  | H<br>±0.010 |
|--------------------|------------|-----------|----------|-------------|-------------|--------------|-------------|
|                    | AWG        |           |          |             |             |              |             |
| TR1656N            | 16 - 14    | 5/16      | 1.106    | 0.331       | 0.472       | 0.031 (0.80) |             |

NOTE: 1. ALL DIMENSIONS ARE IN INCHES UNLESS OTHERWISE SPECIFIED.

2. ALL DA,DB,LA,LB,WP AND J SERIES OF CAT.NO.S ARE LISTED BY "UNDERWRITERS INC." AND "CSA" FOR USE ON CODE WIRES AND FLEX/24 STRANDED CABLES.

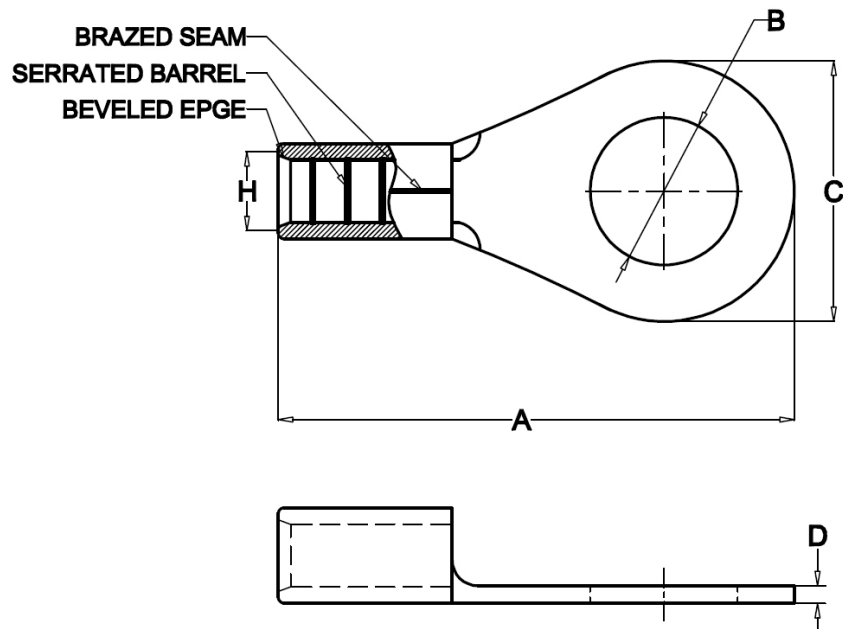
PRE-FIX CAT.NO.WITH "L" HAS NOT PEEP HOLE UNLESS OTHERWISE SPECIFIED IN THE SUFFIX OF THE CAT.NO. WITH "P".

MATERIAL: HIGH CONDUCTIVITY WROUGHT COPPER

FINISH: ELECTOR-TIN PLATE UNLESS OTHERWISE SPECIFIED PLATE PER MIL - T -16366.  
SUFFIX CAT.NO.WITH "SP" FOR SILVER.

INSTALLATION GUIDE

DIE CODE = \_\_  
DIE COLOR = \_\_



**HUYA®**  
www.huyaco.com

**CELESTRA CORPORATION**

76. Huancun Rd. Zhongcun Town.  
Panyu Dist. Guangzhou 511495.

TITLE WIRE CONNECTORS AND SOLDERING  
LUGS FOR CODE AND FLEX CABLE

MATERIAL HIGH-CONDUCTIVITY  
WROUGHT COPPER

PRT. NO.  
TR1656N

SCALE  
NTS

THIRD ANGLE PROJECTION

FINISH  
ELECTRO TIN PLATE

DWG. NO.  
186-cp2389

UNIT  
INCH



|    |           |           |           |                                     |
|----|-----------|-----------|-----------|-------------------------------------|
| 00 | 23-Aug-25 | Ruby Feng | Sinia Qiu | Celestra Standards Spec. Initialed. |
|----|-----------|-----------|-----------|-------------------------------------|

| REV | DATE | DWN | CHK | DESCRIPTION |
|-----|------|-----|-----|-------------|
|-----|------|-----|-----|-------------|

ECN