

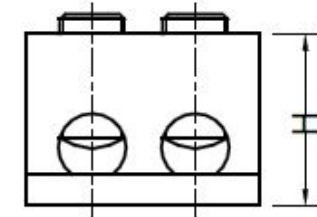
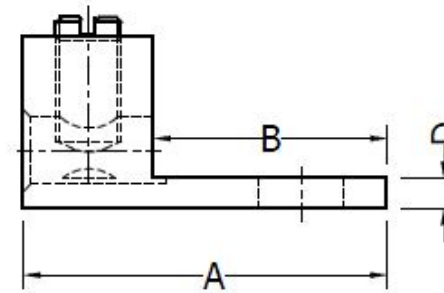
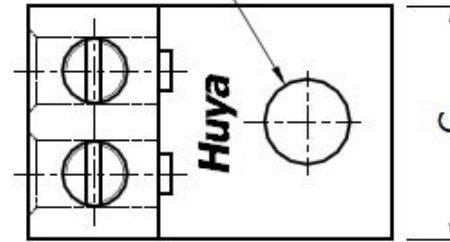
THE INFORMATION ON THIS DRAWING IS THE PROPERTY OF CELESTRA CORPORATION, IS DISCLOSED IN CONFIDENCE, AND IS NOT TO BE REPRODUCED, USED OR DISCLOSED EXCEPT FOR THE PURPOSE FOR WHICH FURNISHED.

CELESTRA CAT.NO	APP CABLE WIRE RANGE	BOLT SIZE	KEY KEY	A	B	C	D	H
AM2506-21	#6 AWG – 250 kcmil	3/8	3/8	±0.03	±0.02	±0.02	±0.015	±0.02

NOTES:

- ALL DIMENSIONS ARE IN INCHES UNLESS OTHERWISE SPECIFIED.
- LUG MATERIAL: ALUMINUM ALLOY 6061-T6.
FINISH: ELECTRO-TIN PLATE.
- SCREW MATERIAL: ALUMINUM ALLOY 2024-T4.
FINISH: ELECTRO-TIN PLATED.
- ALL MATERIALS ARE COMPLIED WITH THE RESTRICTION OF HAZARDOUS SUBSTANCES (RoHS) DIRECTIVE (2002/95/EC).
- CONNECTOR IS FOR COPPER AND ALUMINUM CONDUCTORS.

BOLT SIZE



Huya

CELESTRA CORPORATION

76, ZHONGSI HUANCUN ROAD, ZHONGCUN TOWN,
PANYU DIST, GUANGZHOU, 511495 CHINA

www.celestra.cn

ALUMINUM MECHANICAL LUGS

#6 AWG – 250 kcmil

REV	DATE	DWN	CHK	DESCRIPTION	ECN
00	01-Jul-25	Hedy Xiao	Sinia Qiu	Celestra Standards Spec. Initialed.	N/A

MATERIAL		PRT. NO.	SCALE	THIRD ANGLE PROJECTION
SEE NOTES	AM2506-21	AM2506-21	NTS	
FINISH	186-0113042464	DWG. NO.	UNIT	
SEE NOTES			INCH	