

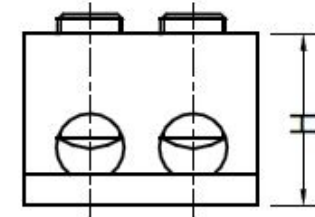
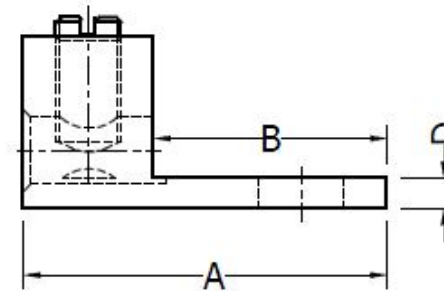
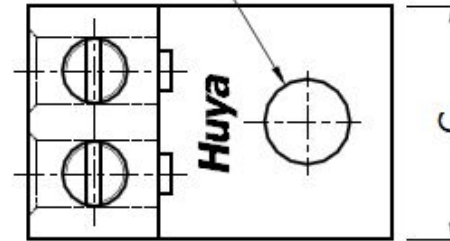
THE INFORMATION ON THIS DRAWING IS THE PROPERTY OF CELESTRA CORPORATION, IS DISCLOSED IN CONFIDENCE, AND IS NOT TO BE REPRODUCED, USED OR DISCLOSED EXCEPT FOR THE PURPOSE FOR WHICH FURNISHED.

| CELESTRA CAT.NO | APP CABLE WIRE RANGE | BOLT SIZE | HEX KEY | A | B | C | D | H |
|-----------------|-----------------------|-----------|---------|-------|-------|-------|--------|-------|
| AM8135-21 | 350 kcmil – 800 kcmil | 5/8 | 7/16 | ±0.03 | ±0.02 | ±0.02 | ±0.015 | ±0.02 |

NOTES:

- ALL DIMENSIONS ARE IN INCHES UNLESS OTHERWISE SPECIFIED.
- LUG MATERIAL: ALUMINUM ALLOY 6061-T6.
FINISH: ELECTRO-TIN PLATE.
- SCREW MATERIAL: ALUMINUM ALLOY 2024-T4.
FINISH: ELECTRO-TIN PLATED.
- ALL MATERIALS ARE COMPLIED WITH THE RESTRICTION OF HAZARDOUS SUBSTANCES (ROHS) DIRECTIVE (2002/95/EC).
- CONNECTOR IS FOR COPPER AND ALUMINUM CONDUCTORS.

BOLT SIZE



Huya

CELESTRA CORPORATION

76, ZHONGSI HUANCUN ROAD, ZHONGCUN TOWN,
PANYU DIST, GUANGZHOU, 511495 CHINA

www.celestra.cn

ALUMINUM MECHANICAL LUGS

350 kcmil – 800 kcmil

| REV | DATE | DWN | CHK | DESCRIPTION | ECN |
|-----|-----------|-----------|-----------|-------------------------------------|-----|
| 00 | 01-May-26 | Hedy Xiao | Sinia Qiu | Celestra Standards Spec. Initialed. | N/A |

| MATERIAL | | PRT. NO. | SCALE | THIRD ANGLE PROJECTION |
|-----------|--|----------------|-------|------------------------|
| SEE NOTES | | AM8135-21 | NTS | |
| FINISH | | DWG. NO. | UNIT | |
| SEE NOTES | | 186-0113042467 | INCH | |