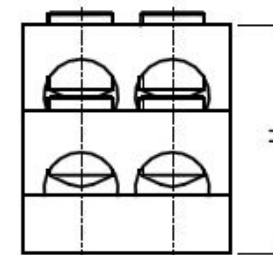
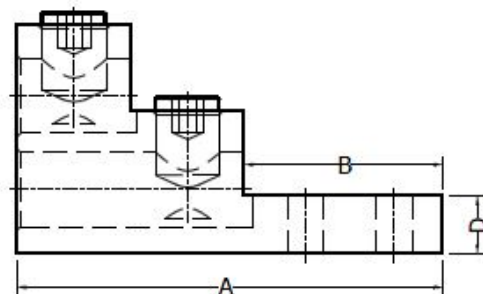
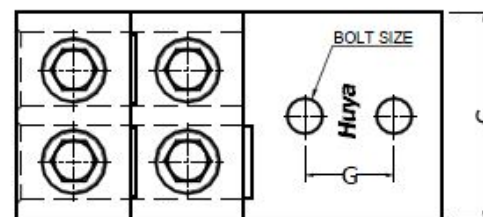


THE INFORMATION ON THIS DRAWING IS THE PROPERTY OF CELESTRA CORPORATION,
IS DISCLOSED IN CONFIDENCE, AND IS NOT TO BE REPRODUCED, USED OR DISCLOSED
EXCEPT FOR THE PURPOSE FOR WHICH FURNISHED.

CELESTRA CAT.NO	APP CABLE WIRE RANGE	BOLT SIZE	KEY KEY	A	B	C	D	G	H
AM7510-42S	1/0 AWG – 750 kcmil	3/8	1/2	±0.03	±0.02	±0.02	±0.015	±0.01	±0.02
				4.91	2.34	2.62	0.74	1.38	2.99

NOTES:

- ALL DIMENSIONS ARE IN INCHES UNLESS OTHERWISE SPECIFIED.
- LUG MATERIAL: ALUMINUM ALLOY 6061-T6.
FINISH: ELECTRO-TIN PLATE.
- SCREW MATERIAL: ALUMINUM ALLOY 2024-T4.
FINISH: ELECTRO-TIN PLATED.
- ALL MATERIALS ARE COMPLIED WITH THE RESTRICTION OF
HAZARDOUS SUBSTANCES (RoHS) DIRECTIVE (2002/95/EC).
- CONNECTOR IS FOR COPPER AND ALUMINUM CONDUCTORS.



Huya

CELESTRA CORPORATION

76, ZHONGSI HUANCUN ROAD, ZHONGCUN TOWN,
PANYU DIST, GUANGZHOU, 511495 CHINA

www.celestra.cn

TITLE

ALUMINUM MECHANICAL LUGS 1/0 AWG – 750 kcmil

MATERIAL	SEE NOTES	PRT. NO.	AM7510-42S	SCALE	NTS	THIRD ANGLE PROJECTION
FINISH	SEE NOTES	DWG. NO.	186-0113042491	UNIT	INCH	