

4

3

2

1

THE INFORMATION ON THIS DRAWING IS THE PROPERTY OF CELESTRA, IS DISCLOSED IN CONFIDENCE AND NOT TO BE REPRODUCED, USED OR DISCLOSED EXCEPT FOR WHICH FURNISHED.

| CELESTRA CAT.NO | WIRE SIZE | | BOLT SIZE | A ±0.06 | B MIN | C ±0.04 | D ±0.015 | G ±0.02 | H ±0.01 |
|--------------------|-----------|---|--------------|------------|----------|------------|-------------|------------|------------|
| | CODE | FLEX | | | | | | | |
| LB203801P-250 | 2/0 AWG | 125 Navy 1/0 Weld 275/24 = 111 kcmil 133/.0282 | 3/8 | 3.64 | 1.84 | 0.85 | 0.13 | 1.00 | 0.52 |

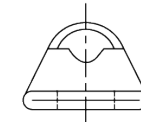
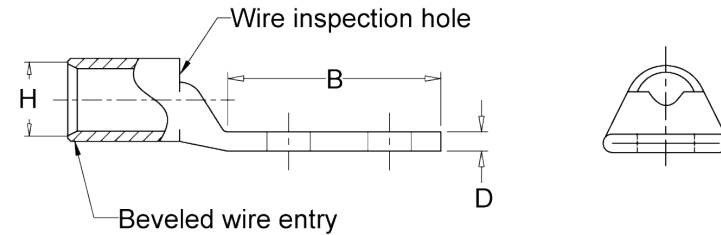
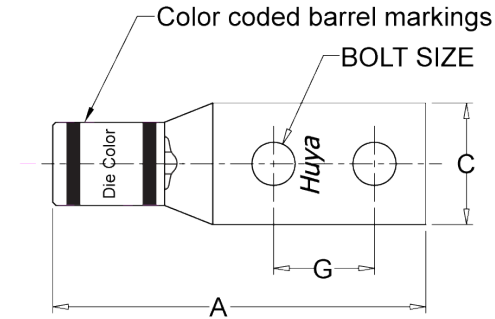
- NOTE:
1. ALL DIMENSIONS ARE IN INCHES UNLESS OTHERWISE SPECIFIED.
 2. ALL DA,DB,LA,LB,WP,AL,AS AND J SERIES OF CAT.NO.S ARE LISTED BY "UNDERWRITERS INC." AND "CSA" FOR USE ON CODE WIRES AND FLEX/24 STRANDED CABLES.

PRE-FIX CAT.NO.WITH "L" HAS NOT PEEP HOLE UNLESS OTHERWISE SPECIFIED IN THE SUFFIX OF THE CAT.NO. WITH "P".

MATERIAL: HIGH CONDUCTIVITY WROUGHT COPPER

FINISH: ELECTOR-TIN PLATE UNLESS OTHERWISE SPECIFIED PER MIL - T - 16366.
SUFFIX CAT.NO.WITH "SP" FOR SILVER.

INSTALLATION GUIDE
DIE CODE = 45
DIE COLOR = Black



HUYA[®]
www.huyaco.com

CELESTRA CORPORATION

76. Huancun Rd. Zhongcun Town.
Panyu Dist. Guangzhou 511495.

TITLE WIRE CONNECTORS AND SOLDERING
LUGS FOR CODE AND FLEX CABLE

MATERIAL HIGH-CONDUCTIVITY
WROUGHT COPPER

PRT. NO.
LB203801P-250

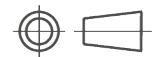
SCALE
NTS

THIRD ANGLE PROJECTION

FINISH
ELECTRO TIN PLATE

DWG. NO.
186-cp2938

UNIT
INCH



| | | | | | |
|----|-----------|-----------|-----------|-------------------------------------|--|
| 00 | 30-Apr-26 | Ruby Feng | Sinia Qiu | Celestra Standards Spec. Initialed. | |
|----|-----------|-----------|-----------|-------------------------------------|--|

| REV | DATE | DWN | CHK | DESCRIPTION | ECN |
|-----|------|-----|-----|-------------|-----|
|-----|------|-----|-----|-------------|-----|

4

3

2

1