

4

3

2

1

THE INFORMATION ON THIS DRAWING IS THE PROPERTY OF CELESTRA, IS DISCLOSED IN CONFIDENCE AND NOT TO BE REPRODUCED, USED OR DISCLOSED EXCEPT FOR WHICH FURNISHED.

CELESTRA CAT.NO	WIRE SIZE		BOLT SIZE	A ±0.06	B MIN	C ±0.04	R	ID ±0.01
	CODE	FLEX						
WP1012-125	1/0 AWG	100 Navy #1 Weld 225/24 = 90.8 kcmil 133/.0254	1/4	1.90	0.81	0.74		

## NOTE:

1. ALL DIMENSIONS ARE IN INCHES UNLESS OTHERWISE SPECIFIED.
2. ALL DA,DB,LA,LB,WP,AL,AS AND J SERIES OF CAT.NO.S ARE LISTED BY "UNDERWRITERS INC." AND "CSA" FOR USE ON CODE WIRES AND FLEX/24 STRANDED CABLES.

PRE-FIX CAT.NO.WITH "L" HAS NOT PEEP HOLE UNLESS OTHERWISE SPECIFIED IN THE SUFFIX OF THE CAT.NO. WITH "P".

## MATERIAL:

HIGH CONDUCTIVITY WROUGHT COPPER

## FINISH:

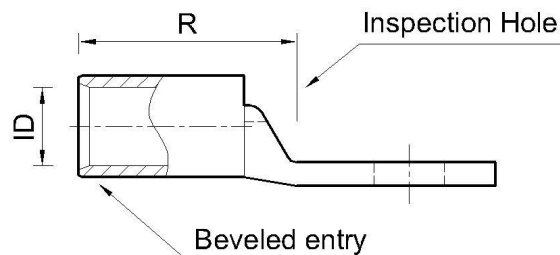
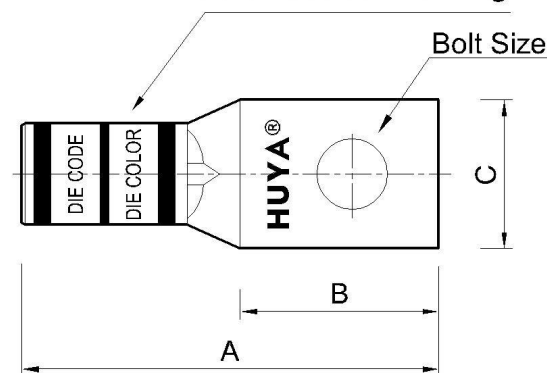
ELECTOR-TIN PLATE UNLESS OTHERWISE SPECIFIED PLATE PER MIL - T -16366.  
SUFFIX CAT.NO.WITH "SP" FOR SILVER.

## INSTALLATION GUIDE

DIE CODE = 42

DIE COLOR = Pink

## Color coded marking



NEBS<sup>3</sup>



**HUYA®**  
www.huyaco.com

## CELESTRA CORPORATION

76. Huancun Rd. Zhongcun Town.  
Panyu Dist. Guangzhou 511495.

TITLE WIRE CONNECTORS AND SOLDERING  
LUGS FOR CODE AND FLEX CABLE

MATERIAL HIGH-CONDUCTIVITY  
WROUGHT COPPER

PRT. NO.  
WP1012-125

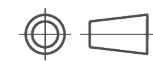
SCALE  
NTS

THIRD ANGLE PROJECTION

FINISH  
ELECTRO TIN PLATE

DWG. NO.  
186-cp0297

UNIT  
INCH



00 17-Jan-26 Ruby Feng Sinia Qiu Celestra Standards Spec. Initialed.

REV DATE DWN CHK DESCRIPTION ECN

4

3

2

1