

4

3

2

1

THE INFORMATION ON THIS DRAWING IS THE PROPERTY OF CELESTRA, IS DISCLOSED IN CONFIDENCE AND NOT TO BE REPRODUCED, USED OR DISCLOSED EXCEPT FOR WHICH FURNISHED.

| CELESTRA CAT.NO | WIRE SIZE | | BOLT SIZE | B MIN | C ±0.04 | D ±0.015 | G ±0.02 | H ±0.01 |
|--------------------|-----------|----------------|--------------|----------|------------|-------------|------------|------------|
| | CODE | FLEX | | | | | | |
| DB041243F-261 | #4 AWG | 105/24 #4 Weld | ?1/2 | 2.83 | 0.83 | 0.12 | 1.75 | 0.33 |

NOTE:

1. ALL DIMENSIONS ARE IN INCHES UNLESS OTHERWISE SPECIFIED.
2. ALL DA,DB,LA,LB,WP AND J SERIES OF CAT.NO.S ARE LISTED BY "UNDERWRITERS INC." AND "CSA" FOR USE ON CODE WIRES AND FLEX/24 STRANDED CABLES.

PRE-FIX CAT.NO.WITH "L" HAS NOT PEEP HOLE UNLESS OTHERWISE SPECIFIED IN THE SUFFIX OF THE CAT.NO. WITH "P".

MATERIAL:

HIGH CONDUCTIVITY WROUGHT COPPER

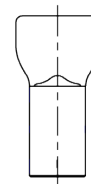
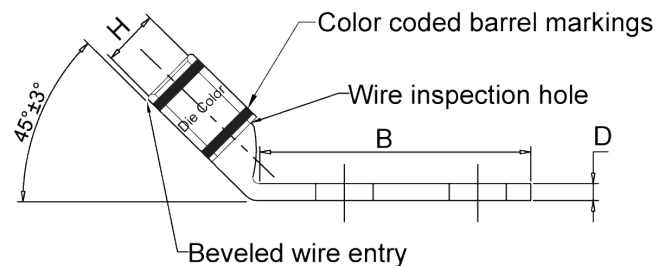
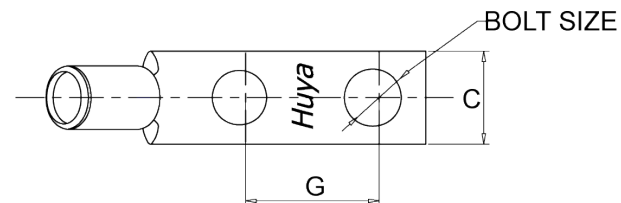
FINISH:

ELECTOR-TIN PLATE UNLESS OTHERWISE SPECIFIED PER MIL - T - 16366.
SUFFIX CAT.NO.WITH "SP" FOR SILVER.

INSTALLATION GUIDE

DIE CODE = 29

DIE COLOR = Gray



HUYA®
www.huyaco.com

CELESTRA CORPORATION

76. Huancun Rd. Zhongcun Town.
Panyu Dist. Guangzhou 511495.

TITLE WIRE CONNECTORS AND SOLDERING
LUGS FOR CODE AND FLEX CABLE

| | | | | | | | | | |
|-----|-----------|-----------|-----------|-------------------------------------|-----|--|---------------------------|--------------|------------------------|
| 00 | 23-Aug-25 | Ruby Feng | Sinia Qiu | Celestra Standards Spec. Initialed. | | MATERIAL HIGH-CONDUCTIVITY WROUGHT COPPER | PRT. NO. DB041243F-261 | SCALE NTS | THIRD ANGLE PROJECTION |
| REV | DATE | DWN | CHK | DESCRIPTION | ECN | FINISH ELECTRO TIN PLATE | DWG. NO. 186-cp3545 | UNIT INCH | |

4

3

2

1