

THE INFORMATION ON THIS DRAWING IS THE PROPERTY OF CELESTRA, IS DISCLOSED IN CONFIDENCE AND NOT TO BE REPRODUCED, USED OR DISCLOSED EXCEPT FOR WHICH FURNISHED.

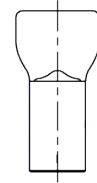
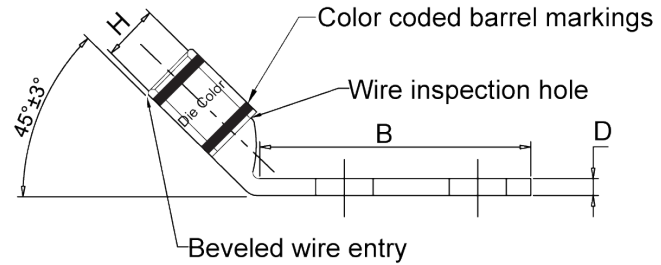
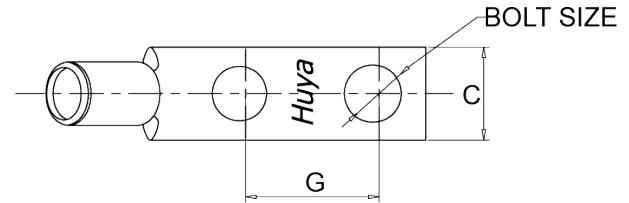
| CELESTRA<br>CAT.NO | WIRE SIZE |  | BOLT<br>SIZE | B<br>MIN | C<br>±0.04 | D<br>±0.015 | G<br>±0.02 | H<br>±0.01 |
|--------------------|-----------|--|--------------|----------|------------|-------------|------------|------------|
|                    | CODE      | FLEX   |              |          |            |             |            |            |
| LB301201FP-250     | 3/0 AWG   | 150 Navy 2/0 Weld<br>325/24 = 131 kcmil<br>133/.0316<br>259/.0227<br>427/.0177 | 1/2          | 2.09     | 0.96       | 0.13        | 1.00       | 0.58       |

- NOTE:
1. ALL DIMENSIONS ARE IN INCHES UNLESS OTHERWISE SPECIFIED.
  2. ALL DA,DB,LA,LB,WP,AL,AS AND J SERIES OF CAT.NO.S ARE LISTED BY "UNDERWRITERS INC." AND "CSA" FOR USE ON CODE WIRES AND FLEX/24 STRANDED CABLES.

PRE-FIX CAT.NO.WITH "L" HAS NOT PEEP HOLE UNLESS OTHERWISE SPECIFIED IN THE SUFFIX OF THE CAT.NO. WITH "P".

MATERIAL: HIGH CONDUCTIVITY WROUGHT COPPER  
 FINISH: ELECTOR-TIN PLATE UNLESS OTHERWISE SPECIFIED PER MIL - T - 16366.  
 SUFFIX CAT.NO.WITH "SP" FOR SILVER.

INSTALLATION GUIDE  
 DIE CODE = 50  
 DIE COLOR = Orange



**HUYA**<sup>®</sup>  
 www.huyaco.com

**CELESTRA CORPORATION**  
 76. Huancun Rd. Zhongcun Town.  
 Panyu Dist. Guangzhou 511495.

TITLE WIRE CONNECTORS AND SOLDERING LUGS FOR CODE AND FLEX CABLE

| REV | DATE      | DWN       | CHK       | DESCRIPTION                         | ECN |
|-----|-----------|-----------|-----------|-------------------------------------|-----|
| 00  | 14-May-26 | Ruby Feng | Sinia Qiu | Celestra Standards Spec. Initialed. |     |

|          |                                  |          |                |       |      |                        |
|----------|----------------------------------|----------|----------------|-------|------|------------------------|
| MATERIAL | HIGH-CONDUCTIVITY WROUGHT COPPER | PRT. NO. | LB301201FP-250 | SCALE | NTS  | THIRD ANGLE PROJECTION |
| FINISH   | ELECTRO TIN PLATE                | DWG. NO. | 186-cp3877     | UNIT  | INCH |                        |

