

4

3

2

1

THE INFORMATION ON THIS DRAWING IS THE PROPERTY OF CELESTRA, IS DISCLOSED IN CONFIDENCE AND NOT TO BE REPRODUCED, USED OR DISCLOSED EXCEPT FOR WHICH FURNISHED.

CELESTRA CAT.NO	WIRE SIZE		BOLT SIZE	B MIN	C ±0.04	D ±0.015	G ±0.02	H ±0.01
	CODE	FLEX						
DB101243A-250	1/0 AWG	100 Navy #1 Weld 225/24 = 90.8 kcmil 133/.0254	1/2	3.00	0.80	0.12	1.75	0.46

NOTE:

1. ALL DIMENSIONS ARE IN INCHES UNLESS OTHERWISE SPECIFIED.
2. ALL DA,DB,LA,LB,WP AND J SERIES OF CAT.NO.S ARE LISTED BY "UNDERWRITERS INC." AND "CSA" FOR USE ON CODE WIRES AND FLEX/24 STRANDED CABLES.

PRE-FIX CAT.NO.WITH "L" HAS NOT PEEP HOLE UNLESS OTHERWISE SPECIFIED IN THE SUFFIX OF THE CAT.NO. WITH "P".

MATERIAL:

HIGH CONDUCTIVITY WROUGHT COPPER

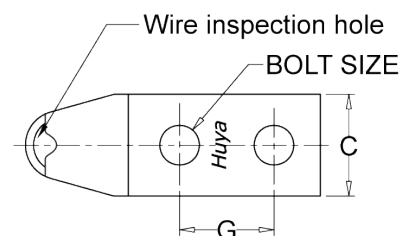
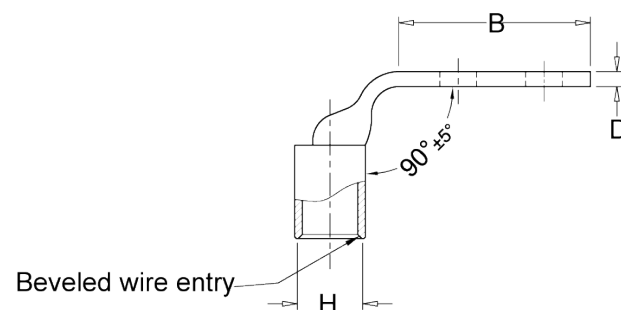
FINISH:

ELECTOR-TIN PLATE UNLESS OTHERWISE SPECIFIED PLATE PER MIL - T -16366.
SUFFIX CAT.NO.WITH "SP" FOR SILVER.

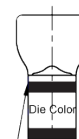
INSTALLATION GUIDE

DIE CODE = 42

DIE COLOR = Pink



Color coded barrel markings



HUYA®
www.huyaco.com

CELESTRA CORPORATION

76. Huancun Rd. Zhongcun Town.
Panyu Dist. Guangzhou 511495.

TITLE WIRE CONNECTORS AND SOLDERING
LUGS FOR CODE AND FLEX CABLE

MATERIAL HIGH-CONDUCTIVITY
WROUGHT COPPER

PRT. NO.
DB101243A-250

SCALE NTS

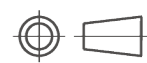
THIRD ANGLE PROJECTION

FINISH

ELECTRO TIN PLATE

DWG. NO. 186-cp4559

UNIT INCH



00 23-Aug-25 Ruby Feng Sinia Qiu Celestra Standards Spec. Initialed.

REV DATE DWN CHK DESCRIPTION ECN

4

3

2

1