

THE INFORMATION ON THIS DRAWING IS THE PROPERTY OF CELESTRA, IS DISCLOSED IN CONFIDENCE AND NOT TO BE REPRODUCED, USED OR DISCLOSED EXCEPT FOR WHICH FURNISHED.

| CELESTRA CAT.NO | WIRE SIZE | | BOLT SIZE | A ±0.06 | B MIN | C ±0.04 | R | ID ±0.01 |
|--------------------|-----------|--------------------------------|--------------|------------|----------|------------|------|-------------|
| | CODE | FLEX | | | | | | |
| LA4056P-261 | 4/0 AWG | 550/24 = 222 kcmil 4/0 Weld | 5/16 | 2.64 | 0.70 | 0.96 | 1.94 | 0.64 |

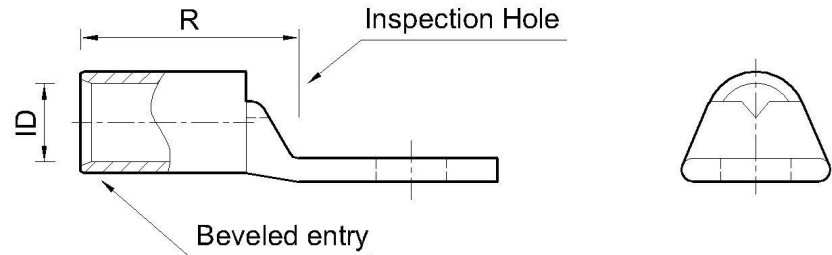
- NOTE:
1. ALL DIMENSIONS ARE IN INCHES UNLESS OTHERWISE SPECIFIED.
 2. ALL DA,DB,LA,LB,WP,AL,AS AND J SERIES OF CAT.NO.S ARE LISTED BY "UNDERWRITERS INC." AND "CSA" FOR USE ON CODE WIRES AND FLEX/24 STRANDED CABLES.

PRE-FIX CAT.NO.WITH "L" HAS NOT PEEP HOLE UNLESS OTHERWISE SPECIFIED IN THE SUFFIX OF THE CAT.NO. WITH "P".

MATERIAL: HIGH CONDUCTIVITY WROUGHT COPPER

FINISH: ELECTOR-TIN PLATE UNLESS OTHERWISE SPECIFIED PER MIL - T - 16366.
SUFFIX CAT.NO.WITH "SP" FOR SILVER.

INSTALLATION GUIDE
DIE CODE = 54
DIE COLOR = Purple



HUYA®
www.huyaco.com

CELESTRA CORPORATION
76. Huancun Rd. Zhongcun Town.
Panyu Dist. Guangzhou 511495.

TITLE WIRE CONNECTORS AND SOLDERING LUGS FOR CODE AND FLEX CABLE

| REV | DATE | DWN | CHK | DESCRIPTION | ECN |
|-----|-----------|-----------|-----------|-------------------------------------|-----|
| 00 | 22-Apr-26 | Ruby Feng | Sinia Qiu | Celestra Standards Spec. Initialed. | |

| | | | | | | |
|----------|----------------------------------|----------|-------------|-------|------|------------------------|
| MATERIAL | HIGH-CONDUCTIVITY WROUGHT COPPER | PRT. NO. | LA4056P-261 | SCALE | NTS | THIRD ANGLE PROJECTION |
| FINISH | ELECTRO TIN PLATE | DWG. NO. | 186-cp0464 | UNIT | INCH | |



4

3

2

1