

4

3

2

1

THE INFORMATION ON THIS DRAWING IS THE PROPERTY OF CELESTRA, IS DISCLOSED IN CONFIDENCE AND NOT TO BE REPRODUCED, USED OR DISCLOSED EXCEPT FOR WHICH FURNISHED.

| CELESTRA<br>CAT.NO | WIRE SIZE |                 | BOLT<br>SIZE | B<br>MIN | C<br>±0.04 | D<br>±0.015 | G<br>±0.02 | H<br>±0.01 |
|--------------------|-----------|-----------------|--------------|----------|------------|-------------|------------|------------|
|                    | CODE      | FLEX            |              |          |            |             |            |            |
| DB401243A-261      | 4/0 AWG   | 550/24 4/0 Weld | 1/2          | 2.83     | 1.20       | 0.15        | 1.75       | 0.71       |

## NOTE:

1. ALL DIMENSIONS ARE IN INCHES UNLESS OTHERWISE SPECIFIED.
2. ALL DA,DB,LA,LB,WP,AL,AS AND J SERIES OF CAT.NO.S ARE LISTED BY "UNDERWRITERS INC." AND "CSA" FOR USE ON CODE WIRES AND FLEX/24 STRANDED CABLES.

PRE-FIX CAT.NO.WITH "L" HAS NOT PEEP HOLE UNLESS OTHERWISE SPECIFIED IN THE SUFFIX OF THE CAT.NO. WITH "P".

## MATERIAL:

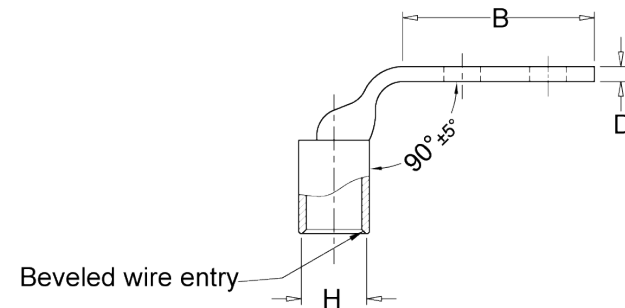
HIGH CONDUCTIVITY WROUGHT COPPER

## FINISH:

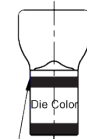
ELECTOR-TIN PLATE UNLESS OTHERWISE SPECIFIED PER MIL - T -16366.  
SUFFIX CAT.NO.WITH "SP" FOR SILVER.

## INSTALLATION GUIDE

DIE CODE = 54  
DIE COLOR = Purple



Color coded barrel markings



**HUYA**<sup>®</sup>  
www.huyaco.com

**CELESTRA CORPORATION**

76. Huancun Rd. Zhongcun Town.  
Panyu Dist. Guangzhou 511495.

TITLE WIRE CONNECTORS AND SOLDERING  
LUGS FOR CODE AND FLEX CABLE

MATERIAL HIGH-CONDUCTIVITY  
WROUGHT COPPER

PRT. NO.  
DB401243A-261

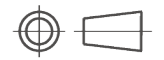
SCALE  
NTS

THIRD ANGLE PROJECTION

FINISH  
ELECTRO TIN PLATE

DWG. NO.  
186-cp4744

UNIT  
INCH



|    |           |           |           |                                     |  |
|----|-----------|-----------|-----------|-------------------------------------|--|
| 00 | 03-Apr-26 | Ruby Feng | Sinia Qiu | Celestra Standards Spec. Initialed. |  |
|----|-----------|-----------|-----------|-------------------------------------|--|

| REV | DATE | DWN | CHK | DESCRIPTION | ECN |
|-----|------|-----|-----|-------------|-----|
|-----|------|-----|-----|-------------|-----|

4

3

2

1