

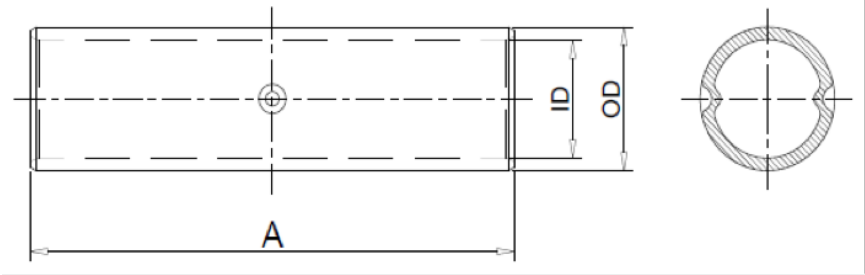
THE INFORMATION ON THIS DRAWING IS THE PROPERTY OF CELESTRA, IS DISCLOSED IN CONFIDENCE AND NOT TO BE REPRODUCED, USED OR DISCLOSED EXCEPT FOR WHICH FURNISHED.

| CELESTRA<br>CAT.NO | Wire Size | Dimension (in.) |      |      | Die Color |
|--------------------|-----------|-----------------|------|------|-----------|
|                    | Code      | A               | ID   | OD   |           |
| AS0824-62          | 8 AWG     | 1.42            | 0.17 | 0.30 | Blue      |

- NOTES:
1. ALL DIMENSIONS ARE IN INCHES UNLESS OTHERWISE SPECIFIED.
  2. ALL DA,DB,LA,LB,WP,AL,AS AND J SERIES OF CAT.NO.S ARE LISTED BY "UNDERWRITERS INC." AND "CSA" FOR USE ON CODE WIRES AND FLEX/24 STRANDED CABLES. PRE-FIX CAT.NO.WITH "L" HAS NOT PEEP HOLE UNLESS OTHERWISE SPECIFIED IN THE SUFFIX OF THE CAT.NO. WITH "P".

MATERIAL: ALUMINIUM ALLOY  
 FINISH: ELECTRO TIN PLATE

INSTALLATION GUIDE  
 DIE CODE = 24  
 DIE COLOR = Blue



**HUYA**<sup>®</sup>  
 www.huyaco.com

**CELESTRA CORPORATION**  
 76. Huancun Rd. Zhongcun Town.  
 Panyu Dist. Guangzhou 511495.

TITLE WIRE CONNECTORS AND SOLDERING LUGS FOR CODE AND FLEX CABLE

| REV | DATE      | DWN       | CHK       | DESCRIPTION | ECN |
|-----|-----------|-----------|-----------|-------------|-----|
|     | 10-Jun-26 | Hedy Xiao | Sinia Qiu |             |     |

|          |                   |          |                |       |      |                        |
|----------|-------------------|----------|----------------|-------|------|------------------------|
| MATERIAL | ALUMINIUM ALLOY   | PRT. NO. | AS0824-62      | SCALE | NTS  | THRID ANGLE PROJECTION |
| FINISH   | ELECTRO TIN PLATE | DWG. NO. | 186-0113045141 | UNIT  | INCH |                        |

