

4

3

2

1

THE INFORMATION ON THIS DRAWING IS THE PROPERTY OF CELESTRA, IS DISCLOSED IN CONFIDENCE AND NOT TO BE REPRODUCED, USED OR DISCLOSED EXCEPT FOR WHICH FURNISHED.

CELESTRA CAT.NO	Wire Size	Dimension (in.)			Die Color
	Code	A	ID	OD	
AS1050	1/0 AWG	2.36	0.41	0.62	Tan

NOTES:

1. ALL DIMENSIONS ARE IN INCHES UNLESS OTHERWISE SPECIFIED.
2. ALL DA,DB,LA,LB,WP,AL,AS AND J SERIES OF CAT.NO.S ARE LISTED BY "UNDERWRITERS INC." AND "CSA" FOR USE ON CODE WIRES AND FLEX/24 STRANDED CABLES. PRE-FIX CAT.NO.WITH "L" HAS NOT PEEP HOLE UNLESS OTHERWISE SPECIFIED IN THE SUFFIX OF THE CAT.NO. WITH "P".

MATERIAL:

ALUMINIUM ALLOY

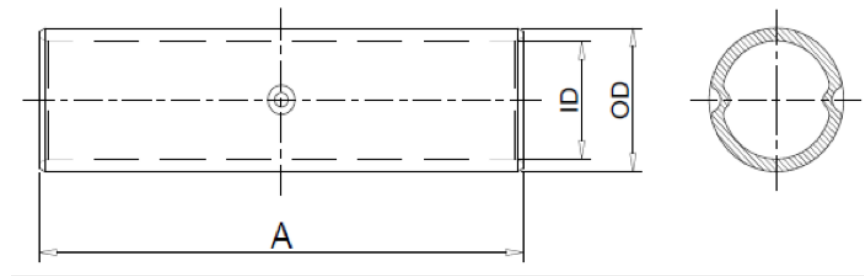
FINISH:

ELECTRO TIN PLATE

INSTALLATION GUIDE

DIE CODE = 50

DIE COLOR = Tan



HUYA[®]
www.huyaco.com

CELESTRA CORPORATION

76. Huancun Rd. Zhongcun Town.
Panyu Dist. Guangzhou 511495.

TITLE WIRE CONNECTORS AND SOLDERING
LUGS FOR CODE AND FLEX CABLE

10-Jun-26

Hedy Xiao

Sinia Qiu

MATERIAL

ALUMINIUM ALLOY

PRT. NO.

AS1050

SCALE

NTS

THIRD ANGLE PROJECTION

REV

DATE

DWN

CHK

DESCRIPTION

ECN

FINISH

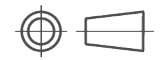
ELECTRO TIN PLATE

DWG. NO.

186-0113045154

UNIT

INCH



4

3

2

1