

THE INFORMATION ON THIS DRAWING IS THE PROPERTY OF CELESTRA CORPORATION, IS DISCLOSED IN CONFIDENCE AND IS NOT TO BE REPRODUCED, USED OR DISCLOSED EXCEPT FOR THE PURPOSE FOR WHICH FURNISHED.

CELESTRA CAT.NO	Wire Size	Dimension (in.)			Die Color
	Code	A	ID	OD	
AS1050-62	1/0 AWG	2.35	0.39	0.60	Tan

- NOTES:
1. ALL DIMENSIONS ARE IN INCHES UNLESS OTHERWISE SPECIFIED.
  2. ALL DA, DB, LA, LB, WP AND J SERIES OF CAT.NO.S ARE LISTED BY "UNDERWRITERS INC." AND "CSA" FOR USE ON CODE WIRES AND FLEX/24 STRANDED CABLES. PRE-FIX CAT.NO.WITH "L" HAS NOT PEEP HOLE UNLESS OTHERWISE SPECIFIED IN THE SUFFIX OF THE CAT.NO. WITH "P".

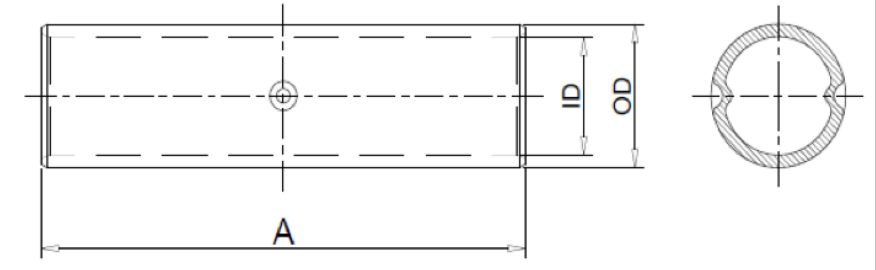
MATERIAL: ALUMINIUM

FINISH:

INSTALLATION GUIDE

DIE CODE = \_

DIE COLOR =



**Huya**

**CELESTRA CORPORATION**

76,ZHONGSI HUANCUN ROAD,ZHONGCUN TOWN,  
PANYU DIST, GUANGZHOU, 511495 CHINA

[www.celestra.cn](http://www.celestra.cn)

TITLE

**AL - Splices  
1/0 AWG**

REV	DATE	DWN	CHK	DESCRIPTION	ECN
00	09-Feb-25	Hedy Xiao	Sinia Qiu	Celestra Standards Spec. Initialed.	N/A

MATERIAL	SEE NOTES	PRT. NO.	SCALE	NTS	THIRD ANGLE PROJECTION
FINISH	SEE NOTES	DWG. NO.	UNIT	INCH	

AS1050-62

186-0113045156

