

4

3

2

1

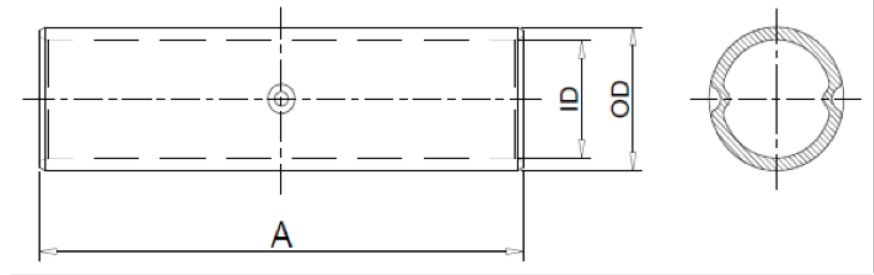
THE INFORMATION ON THIS DRAWING IS THE PROPERTY OF CELESTRA, IS DISCLOSED IN CONFIDENCE AND NOT TO BE REPRODUCED, USED OR DISCLOSED EXCEPT FOR WHICH FURNISHED.

CELESTRA CAT.NO	Wire Size	Dimension (in.)			Die Color
	Code	A	ID	OD	
AS6106-62	600 kcmil	5.12	0.92	1.44	Black

- NOTES:
1. ALL DIMENSIONS ARE IN INCHES UNLESS OTHERWISE SPECIFIED.
 2. ALL DA,DB,LA,LB,WP,AL,AS AND J SERIES OF CAT.NO.S ARE LISTED BY "UNDERWRITERS INC." AND "CSA" FOR USE ON CODE WIRES AND FLEX/24 STRANDED CABLES. PRE-FIX CAT.NO.WITH "L" HAS NOT PEEP HOLE UNLESS OTHERWISE SPECIFIED IN THE SUFFIX OF THE CAT.NO. WITH "P".

MATERIAL: ALUMINIUM ALLOY
FINISH: ELECTRO TIN PLATE

INSTALLATION GUIDE
DIE CODE = 106
DIE COLOR = Black



HUYA[®]
www.huyaco.com

CELESTRA CORPORATION
76. Huancun Rd. Zhongcun Town.
Panyu Dist. Guangzhou 511495.

TITLE WIRE CONNECTORS AND SOLDERING
LUGS FOR CODE AND FLEX CABLE

REV	DATE	DWN	CHK	DESCRIPTION	ECN	MATERIAL ALUMINIUM ALLOY	PRT. NO. AS6106-62	SCALE NTS	THRID ANGLE PROJECTION
	10-Jun-26	Hedy Xiao	Sinia Qiu			FINISH ELECTRO TIN PLATE	DWG. NO. 186-0113045183	UNIT INCH	

4

3

2

1