

THE INFORMATION ON THIS DRAWING IS THE PROPERTY OF CELESTRA, IS DISCLOSED IN CONFIDENCE AND NOT TO BE REPRODUCED, USED OR DISCLOSED EXCEPT FOR WHICH FURNISHED.

| CELESTRA<br>CAT.NO | WIRE SIZE<br>Code | BOLT<br>SIZE | A     | B    | C     | D      | F     | G     | ID    | OD    | H     |
|--------------------|-------------------|--------------|-------|------|-------|--------|-------|-------|-------|-------|-------|
|                    |                   |              | ±0.06 | MIN  | ±0.04 | ±0.015 | ±0.02 | ±0.02 | ±0.01 | ±0.01 | ±0.02 |
| AL301243-52        | 3/0 AWG           | 1/2          | 5.31  | 3.26 | 1.03  | 0.27   | 0.63  | 1.75  | 0.48  | 0.76  | 1.55  |

NOTE:

1. ALL DIMENSIONS ARE IN INCHES UNLESS OTHERWISE SPECIFIED.
2. ALL DA,DB,LA,LB,WP AND J SERIES OF CAT.NO.S ARE LISTED BY "UNDERWRITERS INC." AND "CSA" FOR USE ON CODE WIRES AND FLEX/24 STRANDED CABLES.

PRE-FIX CAT.NO.WITH "L" HAS NOT PEEP HOLE UNLESS OTHERWISE SPECIFIED IN THE SUFFIX OF THE CAT.NO. WITH "P".

MATERIAL:

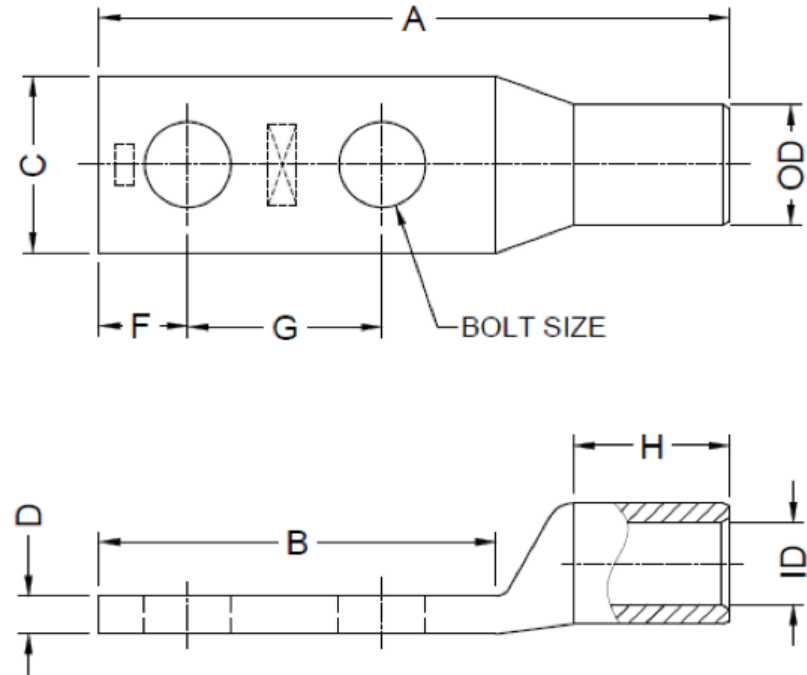
HIGH CONDUCTIVITY WROUGHT COPPER

FINISH:

ELECTOR-TIN PLATE UNLESS OTHERWISE SPECIFIED PER MIL - T -16366.  
SUFFIX CAT.NO.WITH "SP" FOR SILVER.

INSTALLATION GUIDE

DIE CODE = 60  
DIE COLOR = Ruby



**HUYA®**  
www.huyaco.com

**CELESTRA CORPORATION**

76. Huancun Rd. Zhongcun Town.  
Panyu Dist. Guangzhou 511495.

TITLE WIRE CONNECTORS AND SOLDERING  
LUGS FOR CODE AND FLEX CABLE

|                       |                         |              |                        |
|-----------------------|-------------------------|--------------|------------------------|
| MATERIAL<br>ALUMINIUM | PRT. NO.<br>AL301243-52 | SCALE<br>NTS | THIRD ANGLE PROJECTION |
| FINISH                | DWG. NO.<br>186-cp5200  | UNIT<br>INCH |                        |