

THE INFORMATION ON THIS DRAWING IS THE PROPERTY OF CELESTRA, IS DISCLOSED IN CONFIDENCE AND NOT TO BE REPRODUCED, USED OR DISCLOSED EXCEPT FOR WHICH FURNISHED.

| CELESTRA<br>CAT.NO | WIRE SIZE | BOLT<br>SIZE | A     | B    | C     | D      | F     | G     | ID    | H     |
|--------------------|-----------|--------------|-------|------|-------|--------|-------|-------|-------|-------|
|                    | Code      |              | ±0.06 | MIN  | ±0.04 | ±0.015 | ±0.02 | ±0.02 | ±0.01 | ±0.02 |
| AL513801           | 500 kcmil | 3/8          | 5.52  | 1.93 | 1.79  | 0.38   | 0.38  | 1.00  | 0.90  | 2.66  |

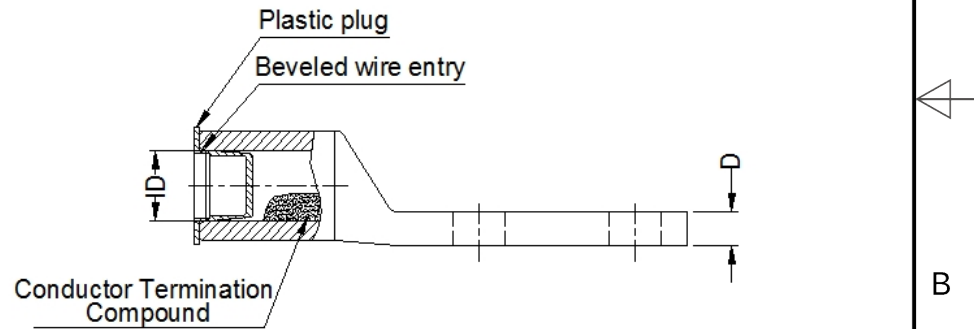
- NOTE:
1. ALL DIMENSIONS ARE IN INCHES UNLESS OTHERWISE SPECIFIED.
  2. ALL DA,DB,LA,LB,WP,AL,AS AND J SERIES OF CAT.NO.S ARE LISTED BY "UNDERWRITERS INC." AND "CSA" FOR USE ON CODE WIRES AND FLEX/24 STRANDED CABLES.

PRE-FIX CAT.NO.WITH "L" HAS NOT PEEP HOLE UNLESS OTHERWISE SPECIFIED IN THE SUFFIX OF THE CAT.NO. WITH "P".

MATERIAL: ALUMINIUM ALLOY

FINISH: ELECTOR-TIN PLATE UNLESS OTHERWISE SPECIFIED PER MIL - T - 16366.  
SUFFIX CAT.NO.WITH "SP" FOR SILVER.

INSTALLATION GUIDE  
DIE CODE = 99  
DIE COLOR = Pink



**HUYA**<sup>®</sup>  
www.huyaco.com

**CELESTRA CORPORATION**  
76. Huancun Rd. Zhongcun Town.  
Panyu Dist. Guangzhou 511495.

TITLE WIRE CONNECTORS AND SOLDERING LUGS FOR CODE AND FLEX CABLE

| REV | DATE      | DWN       | CHK       | DESCRIPTION                         | ECN |
|-----|-----------|-----------|-----------|-------------------------------------|-----|
| 00  | 14-Apr-26 | Ruby Feng | Sinia Qiu | Celestra Standards Spec. Initialed. |     |

|                             |                        |              |                            |
|-----------------------------|------------------------|--------------|----------------------------|
| MATERIAL<br>ALUMINIUM ALLOY | PRT. NO.<br>AL513801   | SCALE<br>NTS | THIRD ANGLE PROJECTION<br> |
| FINISH<br>ELECTRO TIN PLATE | DWG. NO.<br>186-cp5228 | UNIT<br>INCH |                            |