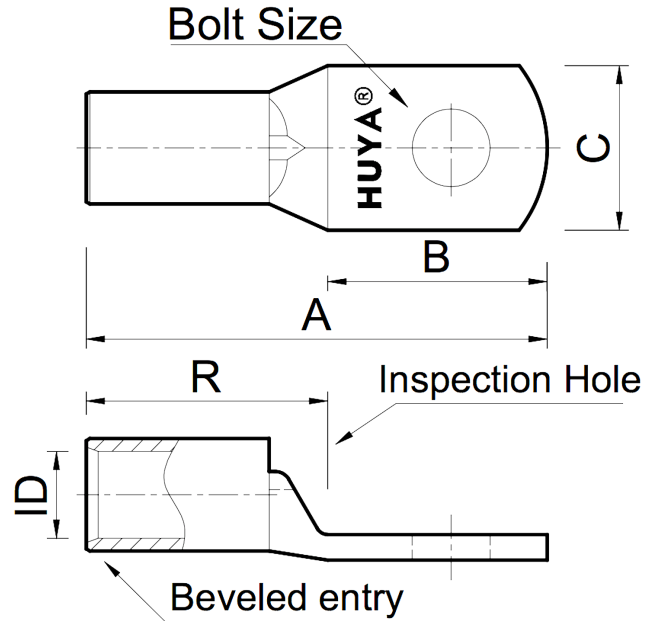


THE INFORMATION ON THIS DRAWING IS THE PROPERTY OF CELESTRA, IS DISCLOSED IN CONFIDENCE AND NOT TO BE REPRODUCED, USED OR DISCLOSED EXCEPT FOR WHICH FURNISHED.

| CELESTRA<br>CAT.NO | Wire Size (mm <sup>2</sup> ) | Dimension (mm) |       |       |       |       |      |
|--------------------|------------------------------|----------------|-------|-------|-------|-------|------|
|                    |                              | Bolt Size      | A     | B     | C     | R     | ID   |
| MC1606-230         | 16.00                        | M6             | 33.00 | 17.00 | 13.00 | 15.20 | 6.00 |

NOTE:  
 ALL DIMENSIONS ARE IN MILLIMETER UNLESS OTHERWISE SPECIFIED.  
 MATERIAL: HIGH CONDUCTIVITY WROUGHT COPPER  
 FINISH: ELECTRO-TIN PLATE

INSTALLATION GUIDE  
 DIE CODE = 3  
 DIE COLOR = --



**HUYA®**  
 www.huyaco.com

**CELESTRA CORPORATION**  
 76. Huancun Rd. Zhongcun Town.  
 Panyu Dist. Guangzhou 511495.

TITLE WIRE CONNECTORS AND SOLDERING LUGS FOR CODE AND FLEX CABLE

|          |                                  |          |            |       |      |                        |
|----------|----------------------------------|----------|------------|-------|------|------------------------|
| MATERIAL | HIGH-CONDUCTIVITY WROUGHT COPPER | PRT. NO. | MC1606-230 | SCALE | NTS  | THIRD ANGLE PROJECTION |
| FINISH   | ELECTRO TIN PLATE                | DWG. NO. | 186-cp5524 | UNIT  | INCH |                        |

| REV | DATE      | DWN       | CHK       | DESCRIPTION                         | ECN |
|-----|-----------|-----------|-----------|-------------------------------------|-----|
| 00  | 20-Apr-26 | Ruby Feng | Sinia Qiu | Celestra Standards Spec. Initialed. |     |