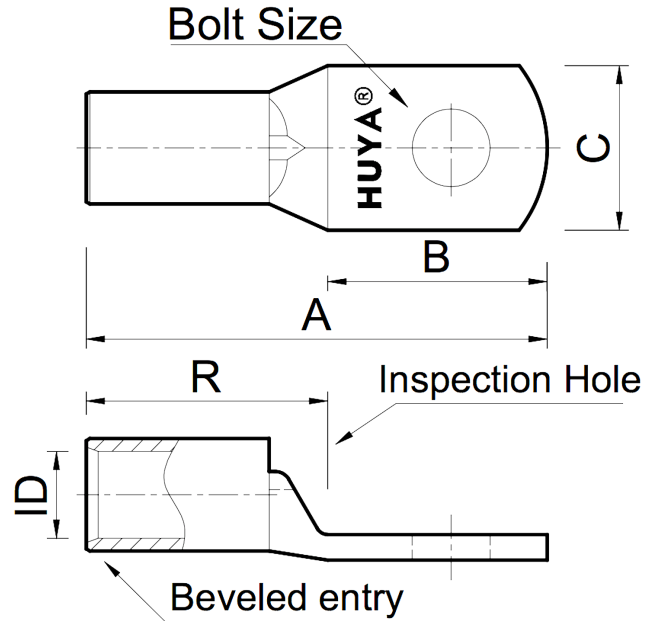


THE INFORMATION ON THIS DRAWING IS THE PROPERTY OF CELESTRA, IS DISCLOSED IN CONFIDENCE AND NOT TO BE REPRODUCED, USED OR DISCLOSED EXCEPT FOR WHICH FURNISHED.

| CELESTRA CAT.NO | Wire Size (mm ²) | Dimension (mm) | | | | | |
|--------------------|------------------------------|----------------|-------|-------|-------|-------|------|
| | | Bolt Size | A | B | C | R | ID |
| MC2506-232 | 25.00 | M6 | 33.00 | 16.00 | 13.00 | 16.50 | 6.70 |

NOTE:
 ALL DIMENSIONS ARE IN MILLIMETER UNLESS OTHERWISE SPECIFIED.
 MATERIAL: HIGH CONDUCTIVITY WROUGHT COPPER
 FINISH: ELECTRO-TIN PLATE

INSTALLATION GUIDE
 DIE CODE = 5
 DIE COLOR = --



HUYA®
 www.huyaco.com

CELESTRA CORPORATION
 76. Huancun Rd. Zhongcun Town.
 Panyu Dist. Guangzhou 511495.

| | | | | | | |
|----------|----------------------------------|--|------------|-------|------|------------------------|
| TITLE | | WIRE CONNECTORS AND SOLDERING LUGS FOR CODE AND FLEX CABLE | | | | |
| MATERIAL | HIGH-CONDUCTIVITY WROUGHT COPPER | PRT. NO. | MC2506-232 | SCALE | NTS | THIRD ANGLE PROJECTION |
| FINISH | ELECTRO TIN PLATE | DWG. NO. | 186-cp5559 | UNIT | INCH | |

| REV | DATE | DWN | CHK | DESCRIPTION | ECN |
|-----|-----------|-----------|-----------|-------------------------------------|-----|
| 00 | 20-Apr-26 | Ruby Feng | Sinia Qiu | Celestra Standards Spec. Initialed. | |