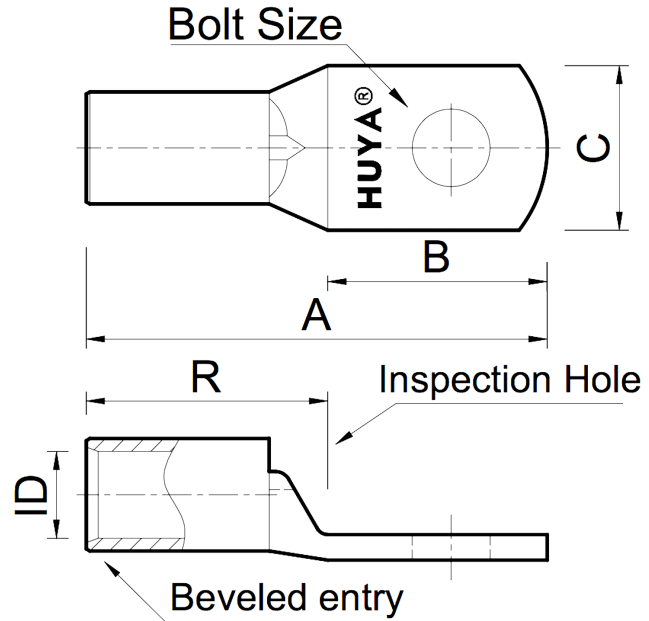


THE INFORMATION ON THIS DRAWING IS THE PROPERTY OF CELESTRA, IS DISCLOSED IN CONFIDENCE AND NOT TO BE REPRODUCED, USED OR DISCLOSED EXCEPT FOR WHICH FURNISHED.

| CELESTRA CAT.NO | Wire Size (mm ²) | Dimension (mm) | | | | | |
|--------------------|------------------------------|----------------|-------|-------|-------|-------|-------|
| | | Bolt Size | A | B | C | R | ID |
| MR1812 | 185.00 | M12 | 98.00 | 31.50 | 37.00 | 54.70 | 19.00 |

NOTE:
 ALL DIMENSIONS ARE IN MILLIMETER UNLESS OTHERWISE SPECIFIED.
 MATERIAL: HIGH CONDUCTIVITY WROUGHT COPPER
 FINISH: ELECTRO-TIN PLATE

INSTALLATION GUIDE
 DIE CODE = 37
 DIE COLOR = --



| REV | DATE | DWN | CHK | DESCRIPTION | ECN |
|-----|-----------|-----------|-----------|-------------------------------------|-----|
| 00 | 20-Apr-26 | Ruby Feng | Sinia Qiu | Celestra Standards Spec. Initialed. | |

| | | | | | | |
|--|----------------------------------|--|------------|-------|------|------------------------|
| HUYA [®] www.huyaco.com | | CELESTRA CORPORATION 76. Huancun Rd. Zhongcun Town. Panyu Dist. Guangzhou 511495. | | | | |
| TITLE WIRE CONNECTORS AND SOLDERING LUGS FOR CODE AND FLEX CABLE | | | | | | |
| MATERIAL | HIGH-CONDUCTIVITY WROUGHT COPPER | PRT. NO. | MR1812 | SCALE | NTS | THIRD ANGLE PROJECTION |
| FINISH | ELECTRO TIN PLATE | DWG. NO. | 186-cp5868 | UNIT | INCH | |

