

THE INFORMATION ON THIS DRAWING IS THE PROPERTY OF CELESTRA, IS DISCLOSED IN CONFIDENCE AND NOT TO BE REPRODUCED, USED OR DISCLOSED EXCEPT FOR WHICH FURNISHED.

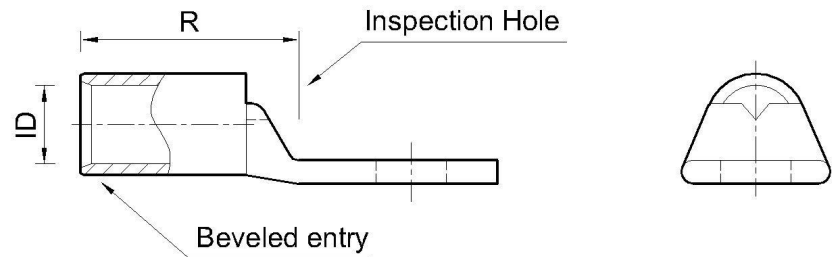
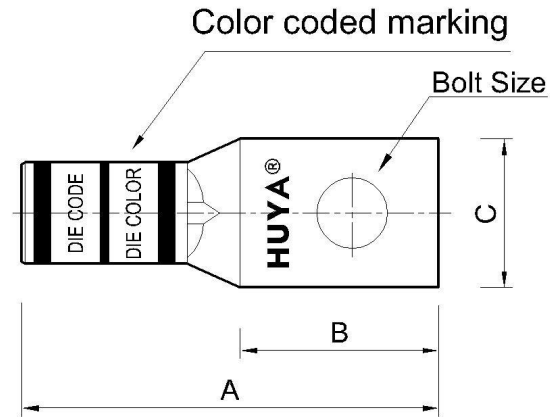
| CELESTRA<br>CAT.NO | WIRE SIZE |          | BOLT<br>SIZE | A<br>±0.06 | B<br>MIN | C<br>±0.04 | R    | ID<br>±0.01 |
|--------------------|-----------|----------|--------------|------------|----------|------------|------|-------------|
|                    | CODE      | FLEX     |              |            |          |            |      |             |
| LA4112-250         | 400 kcmil | 400 Navy | 7/8          | 4.07       | 1.17     | 1.39       | 2.90 | 0.76        |

- NOTE:
1. ALL DIMENSIONS ARE IN INCHES UNLESS OTHERWISE SPECIFIED.
  2. ALL DA,DB,LA,LB,WP,AL,AS AND J SERIES OF CAT.NO.S ARE LISTED BY "UNDERWRITERS INC." AND "CSA" FOR USE ON CODE WIRES AND FLEX/24 STRANDED CABLES.

PRE-FIX CAT.NO.WITH "L" HAS NOT PEEP HOLE UNLESS OTHERWISE SPECIFIED IN THE SUFFIX OF THE CAT.NO. WITH "P".

MATERIAL: HIGH CONDUCTIVITY WROUGHT COPPER  
 FINISH: ELECTOR-TIN PLATE UNLESS OTHERWISE SPECIFIED PER MIL - T -16366.  
 SUFFIX CAT.NO.WITH "SP" FOR SILVER.

INSTALLATION GUIDE  
 DIE CODE = 76  
 DIE COLOR = Blue



**HUYA**<sup>®</sup>  
 www.huyaco.com

**CELESTRA CORPORATION**  
 76. Huancun Rd. Zhongcun Town.  
 Panyu Dist. Guangzhou 511495.

TITLE WIRE CONNECTORS AND SOLDERING LUGS FOR CODE AND FLEX CABLE

| REV | DATE      | DWN       | CHK       | DESCRIPTION                         | ECN |
|-----|-----------|-----------|-----------|-------------------------------------|-----|
| 00  | 18-Apr-26 | Ruby Feng | Sinia Qiu | Celestra Standards Spec. Initialed. |     |

|          |                                  |          |            |       |      |                        |
|----------|----------------------------------|----------|------------|-------|------|------------------------|
| MATERIAL | HIGH-CONDUCTIVITY WROUGHT COPPER | PRT. NO. | LA4112-250 | SCALE | NTS  | THIRD ANGLE PROJECTION |
| FINISH   | ELECTRO TIN PLATE                | DWG. NO. | 186-cp0591 | UNIT  | INCH |                        |

