

THE INFORMATION ON THIS DRAWING IS THE PROPERTY OF CELESTRA, IS DISCLOSED IN CONFIDENCE AND NOT TO BE REPRODUCED, USED OR DISCLOSED EXCEPT FOR WHICH FURNISHED.

| CELESTRA CAT.NO | Wire Size (mm ²) | Dimension (mm) | | | | |
|--------------------|------------------------------|----------------|-------|-------|-------|-------|
| | | Bolt Size | B | C | R | ID |
| MC4120A-40 | 400.00 | M20 | 48.00 | 49.00 | 65.30 | 27.00 |

NOTE:

ALL DIMENSIONS ARE IN MILLIMETER UNLESS OTHERWISE SPECIFIED.

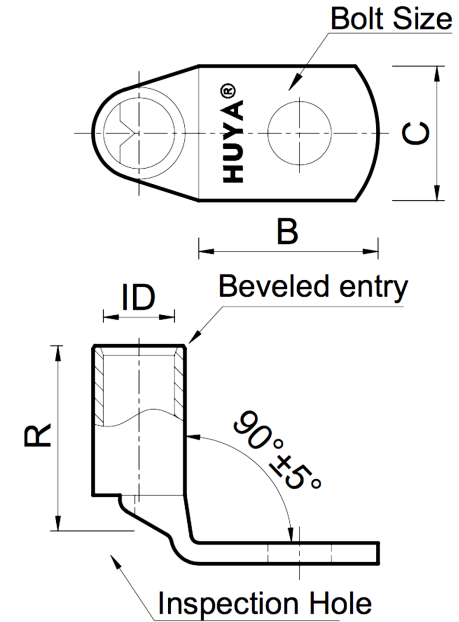
MATERIAL: HIGH CONDUCTIVITY WROUGHT COPPER

FINISH: ELECTRO-TIN PLATE

INSTALLATION GUIDE

DIE CODE = 80

DIE COLOR = --



NEBS³



CE

HUYA[®]
www.huyaco.com

CELESTRA CORPORATION
76. Huancun Rd. Zhongcun Town.
Panyu Dist. Guangzhou 511495.

TITLE WIRE CONNECTORS AND SOLDERING LUGS FOR CODE AND FLEX CABLE

| | | | | | | |
|----------|----------------------------------|----------|------------|-------|------|------------------------|
| MATERIAL | HIGH-CONDUCTIVITY WROUGHT COPPER | PRT. NO. | MC4120A-40 | SCALE | NTS | THIRD ANGLE PROJECTION |
| FINISH | ELECTRO TIN PLATE | DWG. NO. | 186-cp6340 | UNIT | INCH | |

| REV | DATE | DWN | CHK | DESCRIPTION | ECN |
|-----|-----------|-----------|-----------|-------------------------------------|-----|
| 00 | 20-Apr-26 | Ruby Feng | Sinia Qiu | Celestra Standards Spec. Initialed. | |