

4

3

2

1

THE INFORMATION ON THIS DRAWING IS THE PROPERTY OF CELESTRA, IS DISCLOSED IN CONFIDENCE AND NOT TO BE REPRODUCED, USED OR DISCLOSED EXCEPT FOR WHICH FURNISHED.

CELESTRA
CAT.NO

Wire Size (mm²)

Dimension (mm)

MC2500NH-252

25.00

Bolt Size

A

B

C

G

R

ID

104.50

70.50

19.00

33.20

7.10

D

NOTE:

ALL DIMENSIONS ARE IN MILLIMETER UNLESS OTHERWISE SPECIFIED.

MATERIAL: HIGH CONDUCTIVITY WROUGHT COPPER

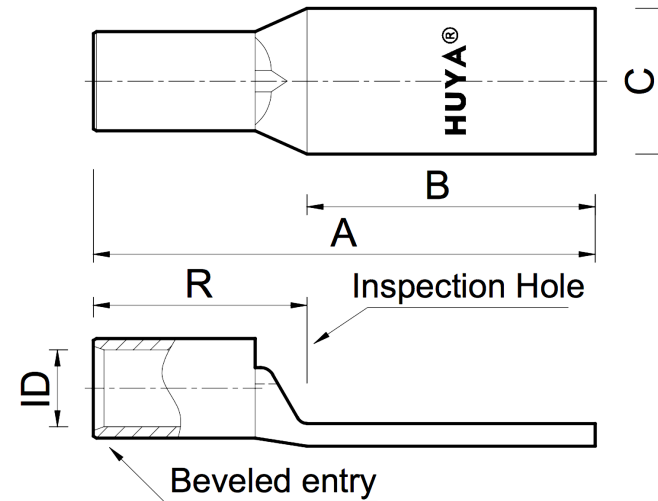
FINISH: ELECTRO-TIN PLATE

INSTALLATION GUIDE

DIE CODE = 5

DIE COLOR = --

C



D

C

B

B



NEBS³



CE

A

A

HUYA[®]
www.huyaco.com

CELESTRA CORPORATION

76. Huancun Rd. Zhongcun Town.
Panyu Dist. Guangzhou 511495.

TITLE WIRE CONNECTORS AND SOLDERING
LUGS FOR CODE AND FLEX CABLE

00 20-Apr-26 Ruby Feng Sinia Qiu Celestra Standards Spec. Initialed.

MATERIAL HIGH-CONDUCTIVITY
WROUGHT COPPER

PRT. NO.
MC2500NH-252

SCALE
NTS

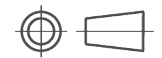
THIRD ANGLE PROJECTION

REV DATE DWN CHK DESCRIPTION ECN

FINISH
ELECTRO TIN PLATE

DWG. NO.
186-cp6470

UNIT
INCH



4

3

2

1