

THE INFORMATION ON THIS DRAWING IS THE PROPERTY OF CELESTRA, IS DISCLOSED IN CONFIDENCE AND NOT TO BE REPRODUCED, USED OR DISCLOSED EXCEPT FOR WHICH FURNISHED.

| CELESTRA CAT.NO | Wire Size (mm ²) | Dimension (mm) | |
|--------------------|------------------------------|----------------|------|
| | | A | ID |
| MS16-30 | 16.00 | 35.00 | 6.00 |

NOTE:

ALL DIMENSIONS ARE IN MILLIMETER UNLESS OTHERWISE SPECIFIED.

MATERIAL: HIGH CONDUCTIVITY WROUGHT COPPER

FINISH: ELECTRO-TIN PLATE

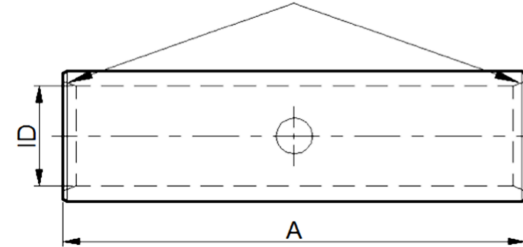
INSTALLATION GUIDE

DIE CODE = 3

DIE COLOR = --



Beveled wire entry



NEBS³



CE

HUYA[®]
www.huyaco.com

CELESTRA CORPORATION

76. Huancun Rd. Zhongcun Town.
Panyu Dist. Guangzhou 511495.

TITLE WIRE CONNECTORS AND SOLDERING LUGS FOR CODE AND FLEX CABLE

MATERIAL HIGH-CONDUCTIVITY WROUGHT COPPER

PRT. NO. MS16-30

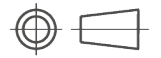
SCALE NTS

THIRD ANGLE PROJECTION

FINISH ELECTRO TIN PLATE

DWG. NO. 186-cp6516

UNIT INCH



| REV | DATE | DWN | CHK | DESCRIPTION | ECN |
|-----|-----------|-----------|-----------|-------------------------------------|-----|
| 00 | 22-Apr-26 | Ruby Feng | Sinia Qiu | Celestra Standards Spec. Initialed. | |