

4

3

2

1

THE INFORMATION ON THIS DRAWING IS THE PROPERTY OF CELESTRA, IS DISCLOSED IN CONFIDENCE AND NOT TO BE REPRODUCED, USED OR DISCLOSED EXCEPT FOR WHICH FURNISHED.

CELESTRA  
CAT.NO

Wire Size (mm<sup>2</sup>)

Dimension (mm)

MS18-30

185.00

A

ID

70.00

21.00

D

NOTE:

ALL DIMENSIONS ARE IN MILLIMETER UNLESS OTHERWISE SPECIFIED.

MATERIAL: HIGH CONDUCTIVITY WROUGHT COPPER

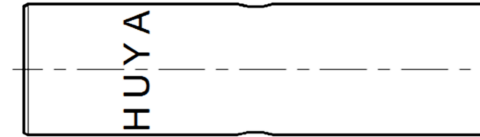
FINISH: ELECTRO-TIN PLATE

INSTALLATION GUIDE

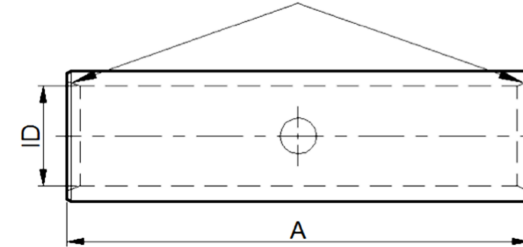
DIE CODE = 37

DIE COLOR = --

C



Beveled wire entry



B



NEBS<sup>3</sup>



CE

A

**HUYA**<sup>®</sup>  
www.huyaco.com

**CELESTRA CORPORATION**

76. Huancun Rd. Zhongcun Town.  
Panyu Dist. Guangzhou 511495.

TITLE WIRE CONNECTORS AND SOLDERING  
LUGS FOR CODE AND FLEX CABLE

MATERIAL HIGH-CONDUCTIVITY  
WROUGHT COPPER

PRT. NO.

MS18-30

SCALE

NTS

THIRD ANGLE PROJECTION

FINISH

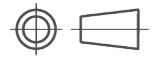
ELECTRO TIN PLATE

DWG. NO.

186-cp6564

UNIT

INCH



00 20-Apr-26 Ruby Feng Sinia Qiu Celestra Standards Spec. Initialed.

REV DATE DWN CHK DESCRIPTION ECN

4

3

2

1

D

C

B

A

↑