

4

3

2

1

THE INFORMATION ON THIS DRAWING IS THE PROPERTY OF CELESTRA, IS DISCLOSED IN CONFIDENCE AND NOT TO BE REPRODUCED, USED OR DISCLOSED EXCEPT FOR WHICH FURNISHED.

CELESTRA
CAT.NO

Wire Size (mm²)

Dimension (mm)

MS18-31

185.00

A

ID

70.00

19.00

D

NOTE:

ALL DIMENSIONS ARE IN MILLIMETER UNLESS OTHERWISE SPECIFIED.

MATERIAL: HIGH CONDUCTIVITY WROUGHT COPPER

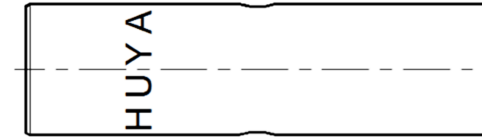
FINISH: ELECTRO-TIN PLATE

INSTALLATION GUIDE

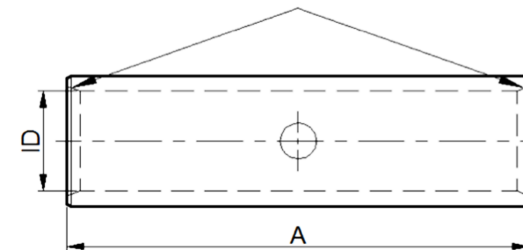
DIE CODE = 37

DIE COLOR = --

C



Beveled wire entry



B



NEBS³



CE

A

HUYA[®]
www.huyaco.com

CELESTRA CORPORATION

76. Huancun Rd. Zhongcun Town.
Panyu Dist. Guangzhou 511495.

TITLE WIRE CONNECTORS AND SOLDERING
LUGS FOR CODE AND FLEX CABLE

MATERIAL HIGH-CONDUCTIVITY
WROUGHT COPPER

PRT. NO.

MS18-31

SCALE

NTS

THIRD ANGLE PROJECTION

FINISH

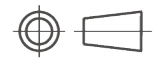
ELECTRO TIN PLATE

DWG. NO.

186-cp6565

UNIT

INCH



00 22-Apr-26 Ruby Feng Sinia Qiu Celestra Standards Spec. Initialed.

REV DATE DWN CHK DESCRIPTION ECN

4

3

2

1

D

C

B

A