

THE INFORMATION ON THIS DRAWING IS THE PROPERTY OF CELESTRA, IS DISCLOSED IN CONFIDENCE AND NOT TO BE REPRODUCED, USED OR DISCLOSED EXCEPT FOR WHICH FURNISHED.

| CELESTRA<br>CAT.NO | Wire Size (mm <sup>2</sup> ) | Dimension (mm) |       |
|--------------------|------------------------------|----------------|-------|
|                    |                              | A              | ID    |
| MS63-30            | 630.00                       | 175.00         | 39.00 |

**NOTE:**

ALL DIMENSIONS ARE IN MILLIMETER UNLESS OTHERWISE SPECIFIED.

MATERIAL: HIGH CONDUCTIVITY WROUGHT COPPER

FINISH: ELECTRO-TIN PLATE

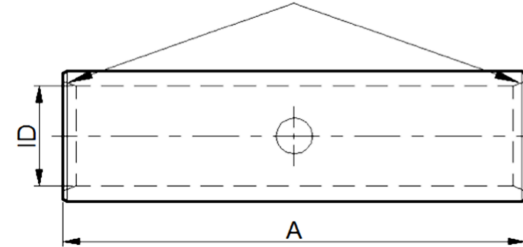
**INSTALLATION GUIDE**

DIE CODE = 120

DIE COLOR = --



Beveled wire entry



**HUYA**<sup>®</sup>  
www.huyaco.com

**CELESTRA CORPORATION**  
76. Huancun Rd. Zhongcun Town.  
Panyu Dist. Guangzhou 511495.

TITLE WIRE CONNECTORS AND SOLDERING LUGS FOR CODE AND FLEX CABLE

| REV | DATE      | DWN       | CHK       | DESCRIPTION                         | ECN |
|-----|-----------|-----------|-----------|-------------------------------------|-----|
| 00  | 20-Apr-26 | Ruby Feng | Sinia Qiu | Celestra Standards Spec. Initialed. |     |

|          |                                  |          |            |       |      |                        |
|----------|----------------------------------|----------|------------|-------|------|------------------------|
| MATERIAL | HIGH-CONDUCTIVITY WROUGHT COPPER | PRT. NO. | MS63-30    | SCALE | NTS  | THIRD ANGLE PROJECTION |
| FINISH   | ELECTRO TIN PLATE                | DWG. NO. | 186-cp6592 | UNIT  | INCH |                        |

