

THE INFORMATION ON THIS DRAWING IS THE PROPERTY OF CELESTRA, IS DISCLOSED IN CONFIDENCE AND NOT TO BE REPRODUCED, USED OR DISCLOSED EXCEPT FOR WHICH FURNISHED.

| CELESTRA<br>CAT.NO | WIRE SIZE |                        | BOLT<br>SIZE | A<br>±0.06 | B<br>MIN | C<br>±0.04 | R    | ID<br>±0.01 |
|--------------------|-----------|------------------------|--------------|------------|----------|------------|------|-------------|
|                    | CODE      | FLEX                   |              |            |          |            |      |             |
| DA7512-260         | 750kcmil  | 1325/24 = 535<br>kcmil | 1/2          | 3.20       | 1.08     | 1.91       | 2.26 | 1.03        |

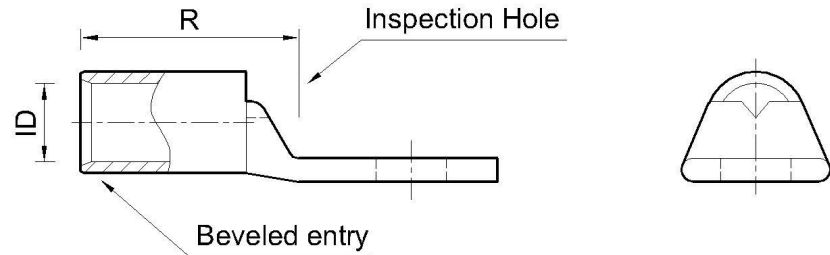
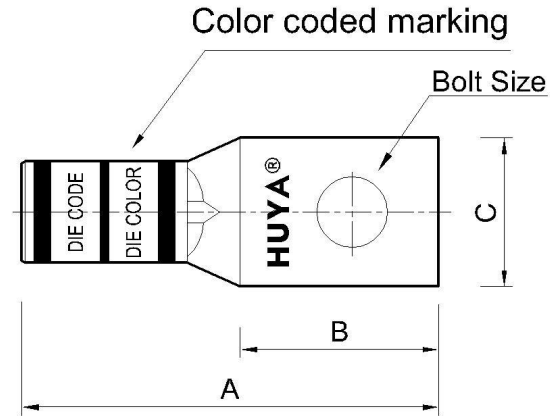
- NOTE:
1. ALL DIMENSIONS ARE IN INCHES UNLESS OTHERWISE SPECIFIED.
  2. ALL DA,DB,LA,LB,WP,AL,AS AND J SERIES OF CAT.NO.S ARE LISTED BY "UNDERWRITERS INC." AND "CSA" FOR USE ON CODE WIRES AND FLEX/24 STRANDED CABLES.

PRE-FIX CAT.NO.WITH "L" HAS NOT PEEP HOLE UNLESS OTHERWISE SPECIFIED IN THE SUFFIX OF THE CAT.NO. WITH "P".

MATERIAL: HIGH CONDUCTIVITY WROUGHT COPPER

FINISH: ELECTOR-TIN PLATE UNLESS OTHERWISE SPECIFIED PER MIL - T - 16366.  
SUFFIX CAT.NO.WITH "SP" FOR SILVER.

INSTALLATION GUIDE  
DIE CODE = 106  
DIE COLOR = Black



**HUYA®**  
www.huyaco.com

**CELESTRA CORPORATION**  
76. Huancun Rd. Zhongcun Town.  
Panyu Dist. Guangzhou 511495.

TITLE WIRE CONNECTORS AND SOLDERING LUGS FOR CODE AND FLEX CABLE

| REV | DATE      | DWN       | CHK       | DESCRIPTION                         | ECN |
|-----|-----------|-----------|-----------|-------------------------------------|-----|
| 00  | 20-Apr-26 | Ruby Feng | Sinia Qiu | Celestra Standards Spec. Initialed. |     |

|          |                                  |          |            |       |      |                        |
|----------|----------------------------------|----------|------------|-------|------|------------------------|
| MATERIAL | HIGH-CONDUCTIVITY WROUGHT COPPER | PRT. NO. | DA7512-260 | SCALE | NTS  | THRID ANGLE PROJECTION |
| FINISH   | ELECTRO TIN PLATE                | DWG. NO. | 186-cp0661 | UNIT  | INCH |                        |

