

THE INFORMATION ON THIS DRAWING IS THE PROPERTY OF CELESTRA, IS DISCLOSED IN CONFIDENCE AND NOT TO BE REPRODUCED, USED OR DISCLOSED EXCEPT FOR WHICH FURNISHED.

| CELESTRA CAT.NO | WIRE SIZE | | BOLT SIZE | A | B | C | R | ID |
|--------------------|-----------|------------------------|--------------|-------|------|-------|------|-------|
| | CODE | FLEX | | ±0.06 | MIN | ±0.04 | | ±0.01 |
| DA9158 | 900 kcmil | 1925/24 = 777 kcmil | 5/8 | 3.98 | 1.58 | 2.17 | 2.54 | 1.19 |

NOTE:

1. ALL DIMENSIONS ARE IN INCHES UNLESS OTHERWISE SPECIFIED.
2. ALL DA,DB,LA,LB,WP AND J SERIES OF CAT.NO.S ARE LISTED BY "UNDERWRITERS INC." AND "CSA" FOR USE ON CODE WIRES AND FLEX/24 STRANDED CABLES.

PRE-FIX CAT.NO.WITH "L" HAS NOT PEEP HOLE UNLESS OTHERWISE SPECIFIED IN THE SUFFIX OF THE CAT.NO. WITH "P".

MATERIAL:

HIGH CONDUCTIVITY WROUGHT COPPER

FINISH:

ELECTOR-TIN PLATE UNLESS OTHERWISE SPECIFIED PLATE PER MIL - T -16366.
SUFFIX CAT.NO.WITH "SP" FOR SILVER.

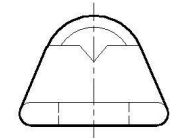
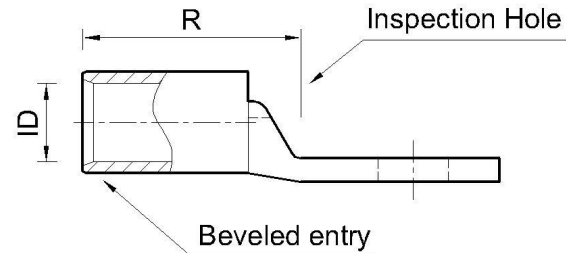
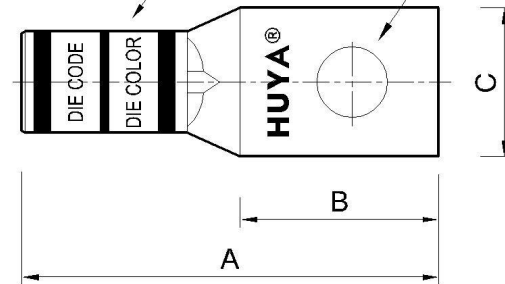
INSTALLATION GUIDE

DIE CODE = 115

DIE COLOR = Yellow

Color coded marking

Bolt Size



HUYA®
www.huyaco.com

CELESTRA CORPORATION

76. Huancun Rd. Zhongcun Town.
Panyu Dist. Guangzhou 511495.

TITLE WIRE CONNECTORS AND SOLDERING
LUGS FOR CODE AND FLEX CABLE

MATERIAL HIGH-CONDUCTIVITY
WROUGHT COPPER

PRT. NO. DA9158

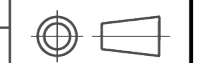
SCALE NTS

THIRD ANGLE PROJECTION

FINISH ELECTRO TIN PLATE

DWG. NO. 186-cp0681

UNIT INCH



| | | | | | |
|-----|-----------|-----------|-----------|-------------------------------------|-----|
| 00 | 23-Aug-25 | Ruby Feng | Sinia Qiu | Celestra Standards Spec. Initialed. | |
| REV | DATE | DWN | CHK | DESCRIPTION | ECN |