

THE INFORMATION ON THIS DRAWING IS THE PROPERTY OF CELESTRA, IS DISCLOSED IN CONFIDENCE AND NOT TO BE REPRODUCED, USED OR DISCLOSED EXCEPT FOR WHICH FURNISHED.

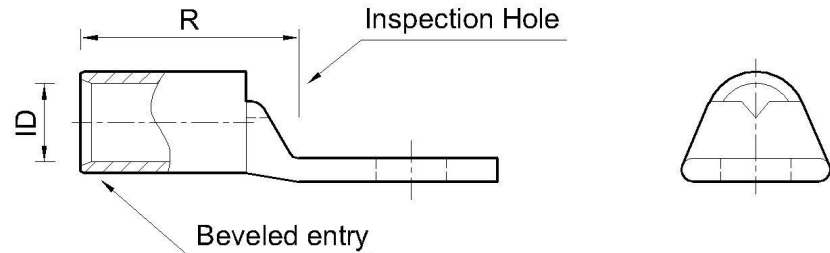
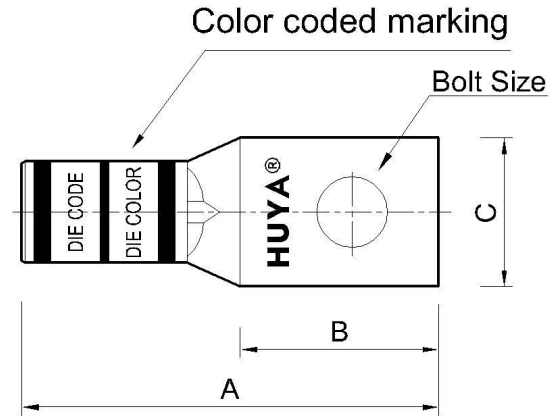
CELESTRA CAT.NO	WIRE SIZE		BOLT SIZE	A ±0.06	B MIN	C ±0.04	R	ID ±0.01
	CODE	FLEX						
DA5158-261	535.3 kcmil 1325/24 500 kcmil	535.3 kcmil 1325/24 500 kcmil	1/2	3.38	1.33	1.84	2.09	0.98

- NOTE:
1. ALL DIMENSIONS ARE IN INCHES UNLESS OTHERWISE SPECIFIED.
  2. ALL DA,DB,LA,LB,WP AND J SERIES OF CAT.NO.S ARE LISTED BY "UNDERWRITERS INC." AND "CSA" FOR USE ON CODE WIRES AND FLEX/24 STRANDED CABLES.

PRE-FIX CAT.NO.WITH "L" HAS NOT PEEP HOLE UNLESS OTHERWISE SPECIFIED IN THE SUFFIX OF THE CAT.NO. WITH "P".

MATERIAL: HIGH CONDUCTIVITY WROUGHT COPPER  
 FINISH: ELECTOR-TIN PLATE UNLESS OTHERWISE SPECIFIED PER MIL - T - 16366.  
 SUFFIX CAT.NO.WITH "SP" FOR SILVER.

INSTALLATION GUIDE  
 DIE CODE = 87  
 DIE COLOR = Brown



REV	DATE	DWN	CHK	DESCRIPTION	ECN
00	01-Jul-25	Ruby Feng	Sinia Qiu	Celestra Standards Spec. Initialed.	

<b>HUYA</b> <sup>®</sup> www.huyaco.com		<b>CELESTRA CORPORATION</b> 76. Huancun Rd. Zhongcun Town. Panyu Dist. Guangzhou 511495.				
TITLE WIRE CONNECTORS AND SOLDERING LUGS FOR CODE AND FLEX CABLE						
MATERIAL	HIGH-CONDUCTIVITY WROUGHT COPPER	PRT. NO.	DA5158-261	SCALE	NTS	THIRD ANGLE PROJECTION
FINISH	ELECTRO TIN PLATE	DWG. NO.	186-cp0702	UNIT	INCH	

