

THE INFORMATION ON THIS DRAWING IS THE PROPERTY OF CELESTRA, IS DISCLOSED IN CONFIDENCE AND NOT TO BE REPRODUCED, USED OR DISCLOSED EXCEPT FOR WHICH FURNISHED.

| CELESTRA<br>CAT.NO | WIRE SIZE |  | BOLT<br>SIZE | B<br>MIN | C<br>±0.04 | D<br>±0.015 | H<br>±0.01 |
|--------------------|-----------|--|--------------|----------|------------|-------------|------------|
|                    | CODE      | FLEX   |              |          |            |             |            |
| WP0614F-015        | 6 AWG     | 30 Navy 6 Weld<br>133/.014 61/24 =<br>24.6 kcmil | 1/4          | 0.52     | 0.44       | 0.09        | 0.22       |

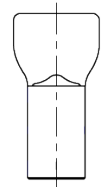
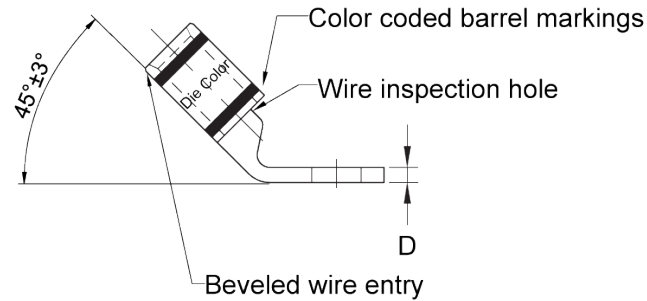
- NOTE:
1. ALL DIMENSIONS ARE IN INCHES UNLESS OTHERWISE SPECIFIED.
  2. ALL DA,DB,LA,LB,WP AND J SERIES OF CAT.NO.S ARE LISTED BY "UNDERWRITERS INC." AND "CSA" FOR USE ON CODE WIRES AND FLEX/24 STRANDED CABLES.

PRE-FIX CAT.NO.WITH "L" HAS NOT PEEP HOLE UNLESS OTHERWISE SPECIFIED IN THE SUFFIX OF THE CAT.NO. WITH "P".

MATERIAL: HIGH CONDUCTIVITY WROUGHT COPPER

FINISH: ELECTOR-TIN PLATE UNLESS OTHERWISE SPECIFIED PLATE PER MIL - T -16366.  
SUFFIX CAT.NO.WITH "SP" FOR SILVER.

INSTALLATION GUIDE  
DIE CODE = 24  
DIE COLOR = Blue



**HUYA®**  
www.huyaco.com

**CELESTRA CORPORATION**  
76. Huancun Rd. Zhongcun Town.  
Panyu Dist. Guangzhou 511495.

TITLE WIRE CONNECTORS AND SOLDERING LUGS FOR CODE AND FLEX CABLE

MATERIAL HIGH-CONDUCTIVITY WROUGHT COPPER

PRT. NO. WP0614F-015

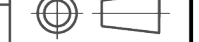
SCALE NTS

THIRD ANGLE PROJECTION

FINISH ELECTRO TIN PLATE

DWG. NO. 186-cp0795

UNIT INCH



|     |           |           |           |                                     |     |
|-----|-----------|-----------|-----------|-------------------------------------|-----|
| 00  | 23-Aug-25 | Ruby Feng | Sinia Qiu | Celestra Standards Spec. Initialed. |     |
| REV | DATE      | DWN       | CHK       | DESCRIPTION                         | ECN |